



**BK - SERIES  
SEWAGE & WASTEWATER PUMPS**

**SPECIFICATIONS**

**■ FEATURES**

1. Internal cooling jacket offers continued cooling during low sump levels or dry pit Pumping.
2. Enclosed Multi-vane, impellers, with field adjustable / replaceable wear plate provides for high wear resistance and enhanced solids handling capability.
3. Highly efficient, continuous duty air filled, copper wound motor with class F insulation minimizes the cost of operation.
4. Built in thermal protection prevents motor failure due to overloading, accidental run-dry and single phasing in three phase units.
5. Double inside mechanical seals with silicon carbide faces, running in an oil filled chamber, equipped with an oil lifter,, and further protected by an exclusionary oil -

- Seal(s), provides for the most durable seal design available.
6. Double shielded, permanently lubricated, high temperature C3 ball bearings rated for a B-10 life of 60,000 hours provide for extended operational life.

**■ APPLICATIONS**

1. Commercial, Industrial sewage, wastewater, or effluent transfer.
2. Decorative fountains and aquiculture .
3. Raw water supply from rivers or lakes.
4. Dry pit sump design available.



**■ SPECIFICATIONS**

Discharge Size  
 Horsepower Range  
 Performance Range, Capacity Head  
 Maximum water temperature  
 Materials of Construction  
     Casing  
     Impeller  
     Shaft  
     Motor Frame  
     Fasteners

Mechanical Seal  
 Elastomers

Impeller Type  
 Solids Handling Capability

Bearings

Motor Nomenclature  
 Type, Speed, Hz.

Voltage, Phase

Insulation  
 Accessories

Operational Mode

**■ STANDARD**

6" ~ 16" (150 ~ 400 mm)  
 30 Hp. ~ 60 Hp. (22 kW ~ 45 kW)  
 429 ~ 6340 G.P.M. (1.6 ~ 24.0 m<sup>3</sup>/min)  
 10.7 Ft.~154.2 Ft. (3.3 ~ 47.0m)  
 104° F. (40° C.)

Cast Iron, ASTM 48 Class 35  
 Cast Iron, ASTM 48 Class 35  
 420 Stainless Steel  
 Cast Iron, ASTM 48 Class 30  
 304 Stainless Steel

Silicon Carbide  
 NBR (Nitril Buna Rubber)

Semi-open, Enclosed, solids handling.  
 1.57" ~ 4.25" (40 ~ 108 mm)

Pre-lubricated, Double Shielded

Air Filled,  
 3600, 1800, 1200 & 900 Rpm, 60 Hz.

460 or 575 V., (3 Phase)

Class F  
 Submersible Power Cable 32' (10 m)

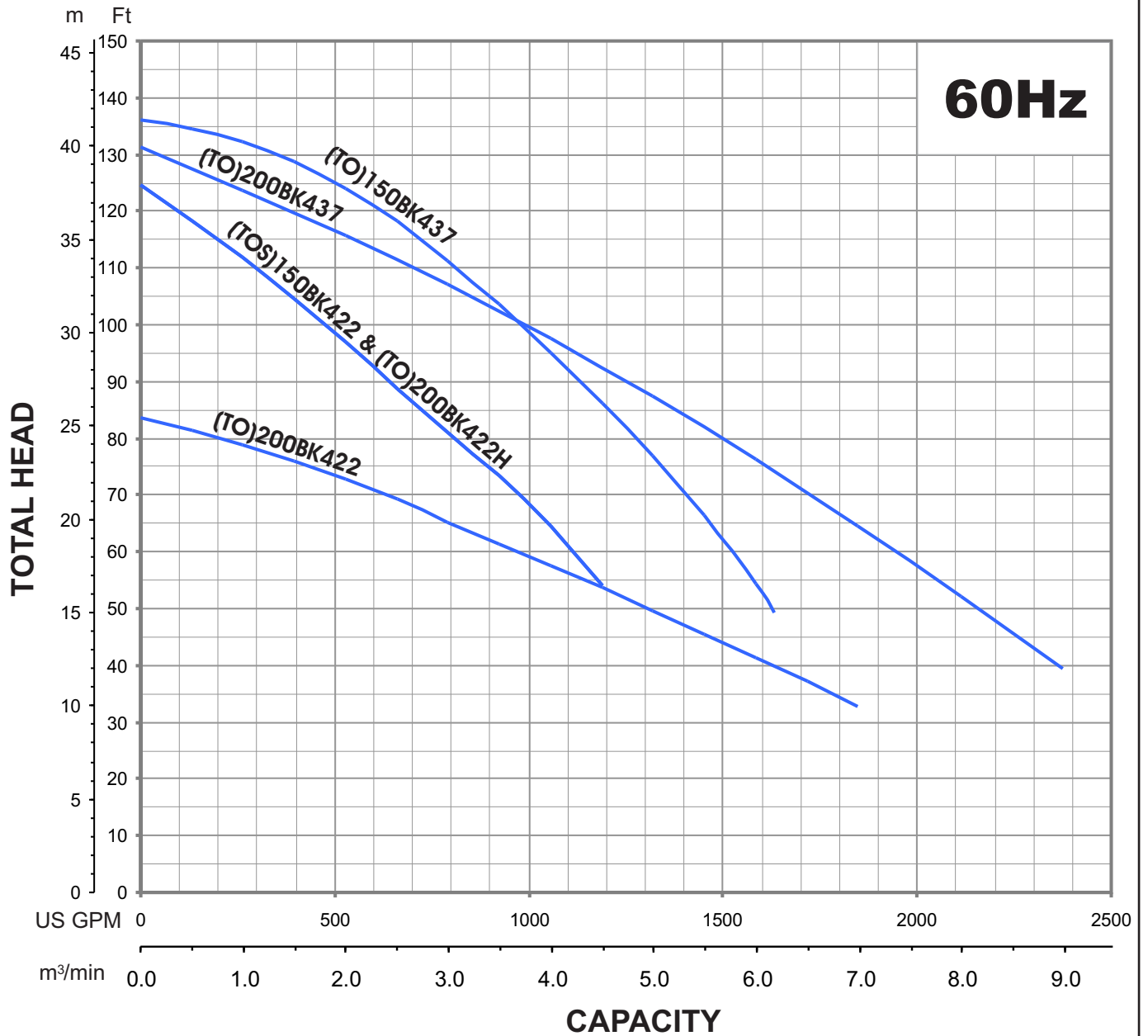
Manual

**■ OPTIONS**

Dry-Pit

Length as required.  
 TO/TOS Slide Rail System

**GROUP PERFORMANCE RANGE**



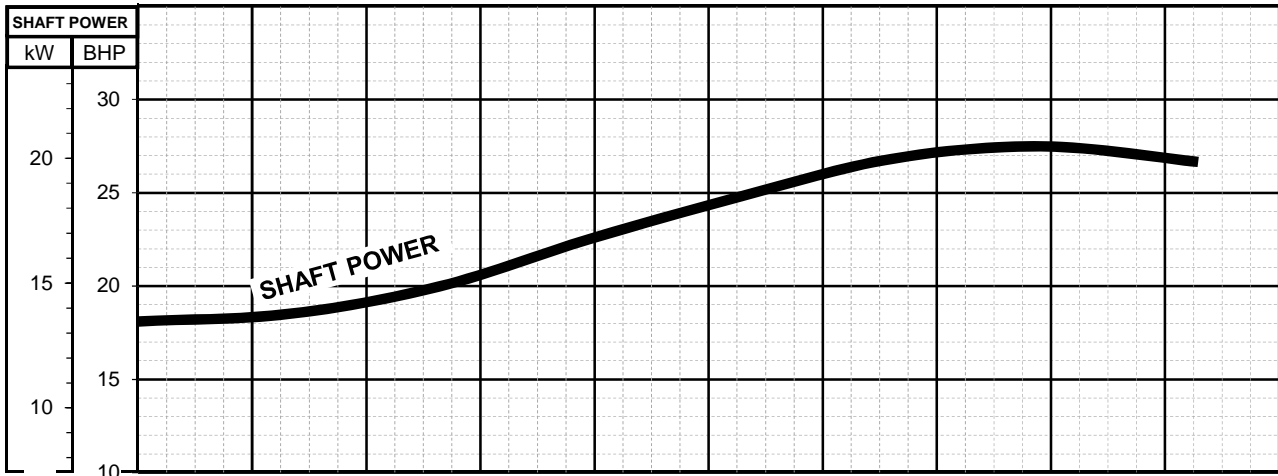
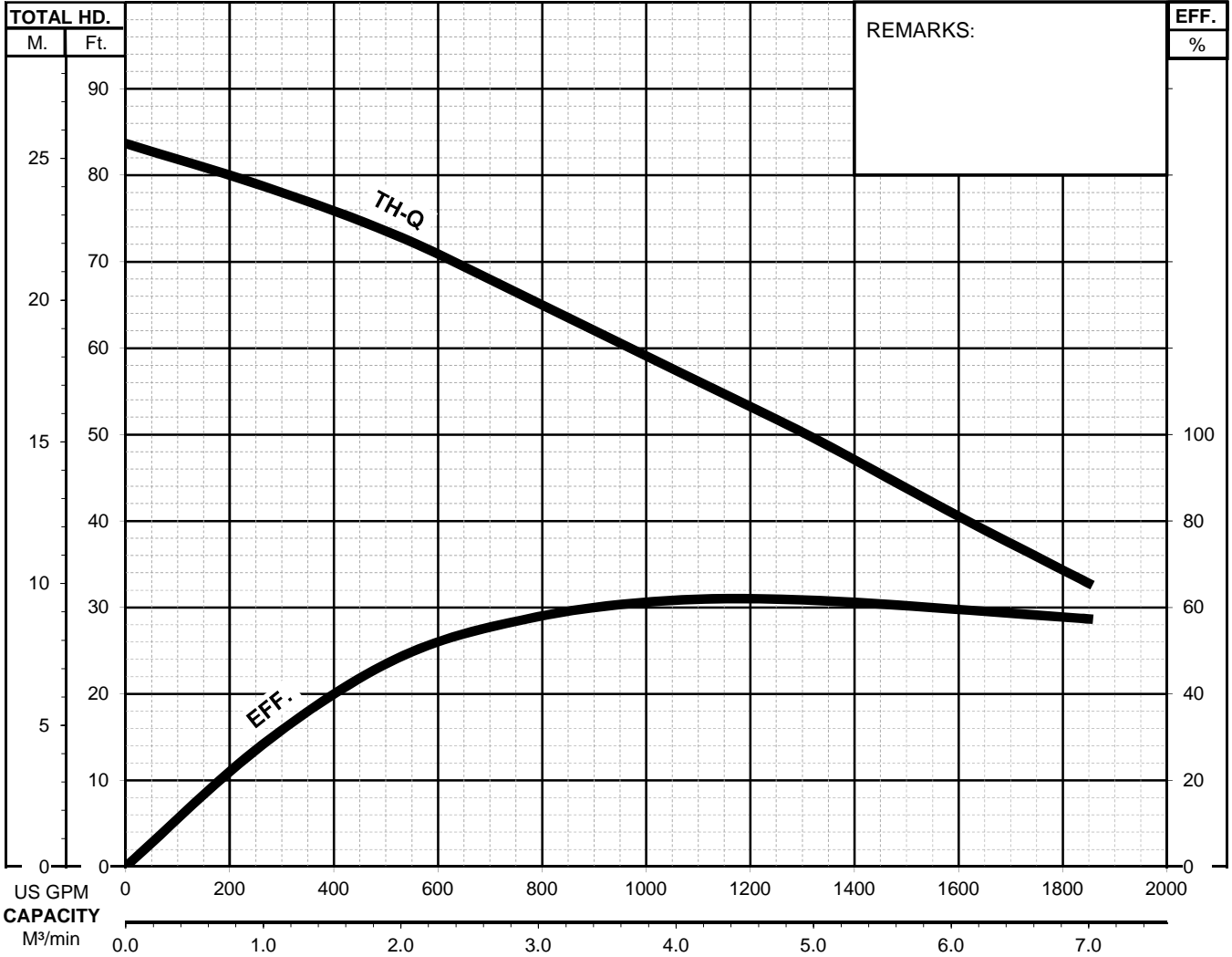


# BK - SERIES

SEWAGE & WASTEWATER PUMPS

PERFORMANCE  
CURVE

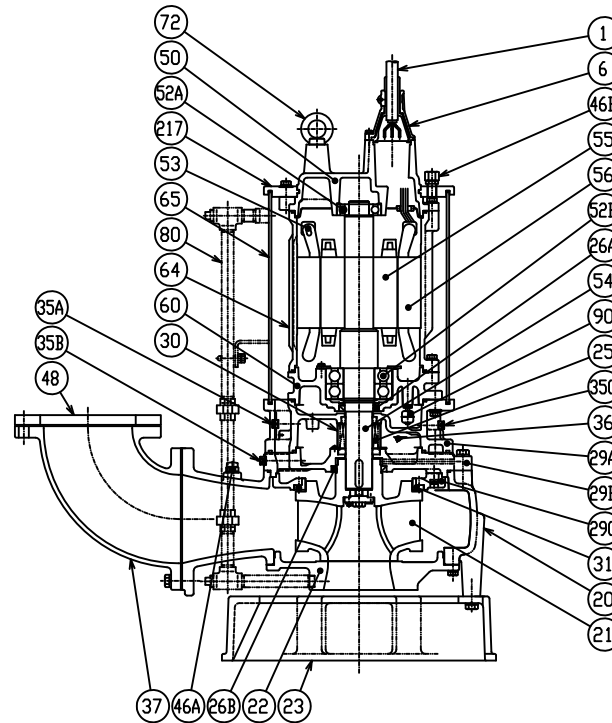
MODEL		BORE	HP	KW	RPM	SOLIDS DIA.	LIQUID	SG.	VISCOSITY	TEMP.
(TO)200BK422-64		8"/200mm	30	22	1750	2.95"/75mm	Water	1.0	1.123cSt.	60°F
PUMP TYPE		PHASE	VOLTAGE		AMPERAGE		HZ	STARTING METHOD		INS. CLASS
Sewage & Wastewater		3	460/575		39 / 31.5		60	Star-Delta		F
CURVE No.	DATE	PHASE	VOLTAGE		AMPERAGE		HZ	STARTING METHOD		INS. CLASS
-	-	-	-		-		-	-		-





**B-SERIES**  
**SEWAGE & WASTEWATER PUMPS**

**SECTIONAL VIEW**



**200BK422 -64**

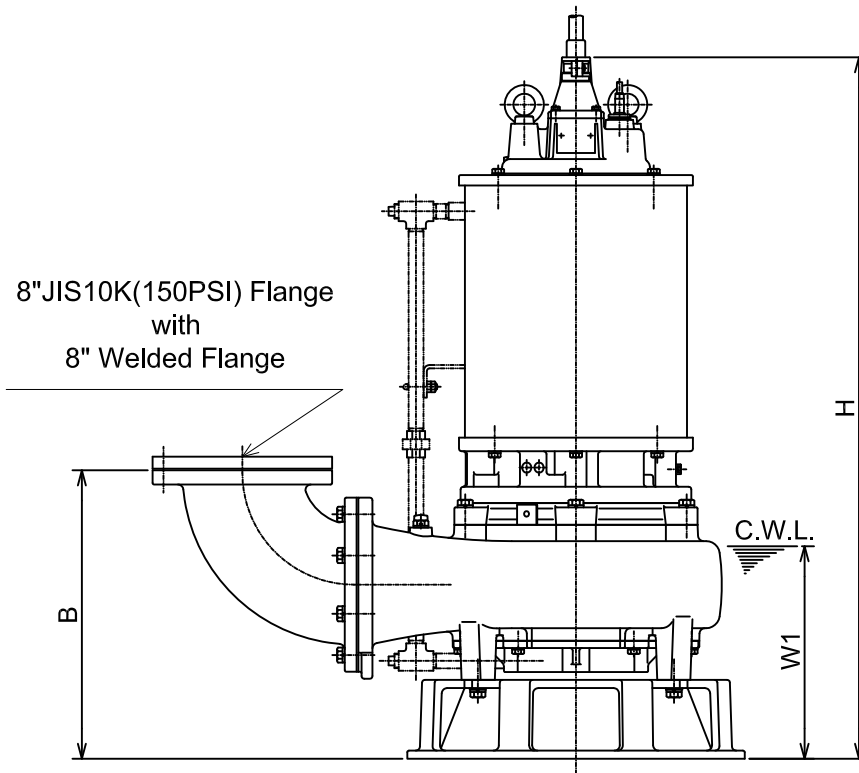
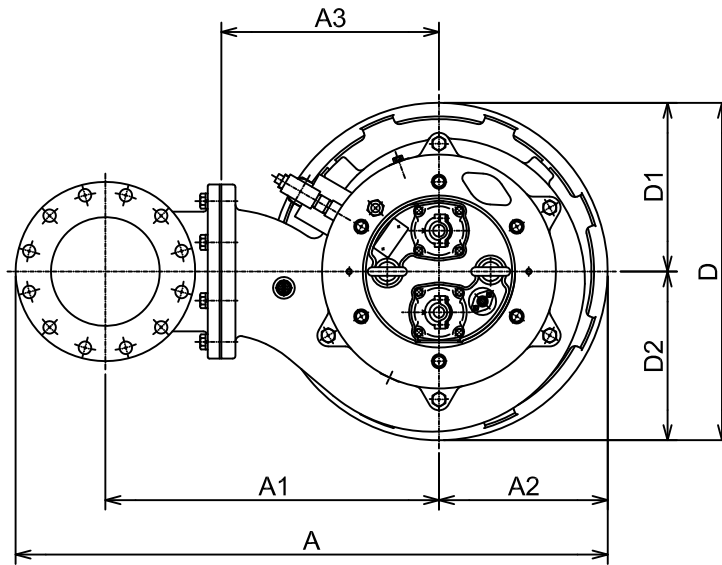
PART#	DESCRIPTION	MAIN MATERIAL / NOTE	RELATED ASTM,AISI CODE	RELATED EN CODE	QTY
1	Power Cable	Chloroprene Sheath AWG 6/4-32ft			1
	Power Cable	Chloroprene Sheath AWG 6/3-32ft			1
	Control Cable	Chloroprene Sheath AWG 16/4-32ft			1
6	Stuffing Box	Cast Iron	A48M Class30B	EN 1561 GJL-200	2
20	Pump Casing	Cast Iron	A48M Class35B	EN 1561 GJL-250	1
21	Impeller	Cast Iron	A48M Class35B	EN 1561 GJL-250	1
22	Suction Cover	Cast Iron	A48M Class35B	EN 1561 GJL-250	1
23	Suction Strainer	Ductile Cast Iron	A536 80-55-06	EN 1563 GJS-500-7	1
25	Mechanical Seal	Silicon Carbide / H-60			1
26A	Oil Seal	NBR / TC659013			1
26B	Oil Seal	NBR / TC10012513			1
29A	Casing Cover	Cast Iron	A48M Class30B	EN 1561 GJL-200	1
29B	Oil Casing	Cast Iron	A48M Class35B	EN 1561 GJL-250	1
29C	Casing Plate	Cast Iron	A48M Class35B	EN 1561 GJL-250	1
30	Oil Lifter	Steel (Cold Rolled )	A109/A1008	EN 10130	1
31	Wear Ring	Cast Iron	A48M Class30B	EN 1561 GJL-200	1
35A	Oil Plug	Stainless Steel	S 30400	1.4301	2
35B	Oil Plug	Stainless Steel	S 30400	1.4301	1
35C	Drain Plug	Stainless Steel	S 30400	1.4301	1
36	Lubricant	Turbine Oil ISO VG32 or SAE 10W-20			
37	Discharge Bend	Cast Iron	A48M Class30B	EN 1561 GJL-200	1
46A	Air Release Valve	Nylon			1
46B	Air Release Valve	Stainless Steel	S 30400	1.4301	1
48	Welded Flange	Cast Iron / 8"	A48M Class30B	EN 1561 GJL-200	1
50	Motor Bracket	Cast Iron	A48M Class30B	EN 1561 GJL-200	1
52A	Upper Bearing	#6309ZZC3			1
52B	Lower Bearing	#6314ZZD2C3			1
53	Motor Protector				3
54	Shaft	Stainless Steel	S 42000	1.4021	1
55	Rotor				1
56	Stator				1
60	Bearing Housing	Cast Iron	A48M Class30B	EN 1561 GJL-200	1
64	Motor Housing	Cast Iron	A48M Class30B	EN 1561 GJL-200	1
65	Outer Cover	Steel	A283 Grade D	EN 10025 S275	1
72	Lifting Lug Bolt	Stainless Steel	S 30400	1.4301	2
80	Cooling Pipe Set	Steel	A283 Grade D	EN 10025 S275	1
90	Leak Sensor (Float)				1
217	Fixing Plate	Cast Iron	A48M Class30B	EN 1561 GJL-200	1



**B-SERIES**  
SEWAGE & WASTEWATER PUMPS

**DIMENSIONS**

200BK422 -64



C.W.L. :Continuous running Water Level

**DIMENSIONS:USCS(Inch)**

Model	HP	NOM. SIZE	Pump & Motor								C.W.L.	*Wt.	
			A	A1	A2	A3	B	D	D1	D2	H	W1	(lbs.)
200BK422 -64	30	8"	42 13/16	24 1/8	12 3/16	15 3/4	20 7/8	24 7/16	12 3/16	12 3/16	50 3/4	15 3/8	1190

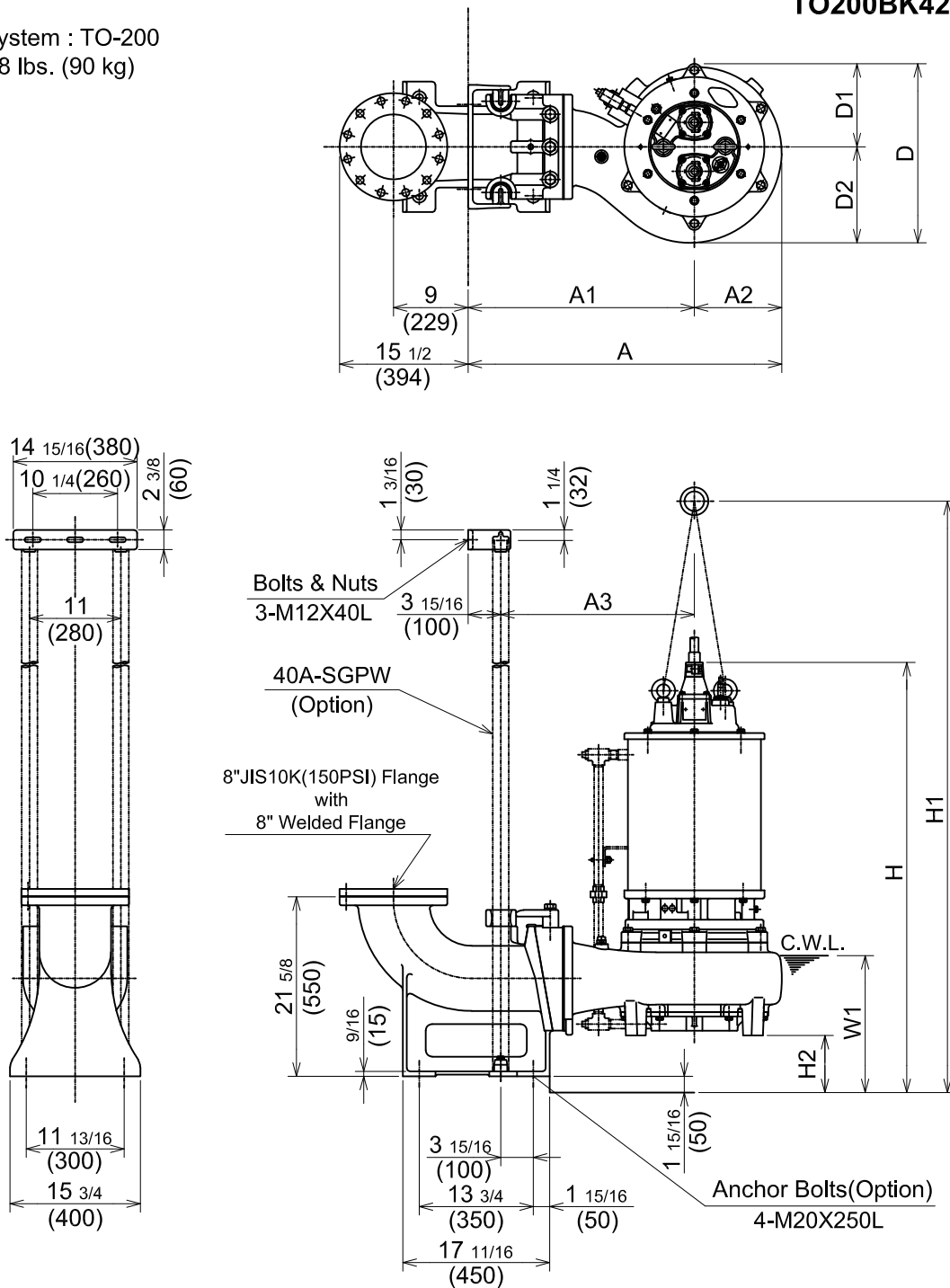
**DIMENSIONS:METRIC(mm)**

Model	kW	NOM. SIZE	Pump & Motor								C.W.L.	*Wt.	
			A	A1	A2	A3	B	D	D1	D2	H	W1	(kg)
200BK422 -64	22	200	1088	613	310	400	530	620	310	310	1289	390	540

\*Excluding Cable

Guide rail system : TO-200  
Weight : 198 lbs. (90 kg)

**TO200BK422 -64**



C.W.L. :Continuous running Water Level

**DIMENSIONS:USCS (Inch)**

Model	HP	NOM. SIZE	Pump & Motor									C.W.L.		*Wt. (lbs.)
			A	A1	A2	A3	D	D1	D2	H	H1	H2	W1	
TO200BK422-64	30	8"	37 7/8	27 5/16	10 9/16	23 3/8	21 5/8	10 1/16	11 9/16	51 15/16	71 3/8	67/8	16 1/2	1050

**DIMENSIONS:METRIC (mm)**

Model	kW	NOM. SIZE	Pump & Motor									C.W.L.		*Wt. (kg)
			A	A1	A2	A3	D	D1	D2	H	H1	H2	W1	
TO200BK422-64	22	200	962	694	268	594	549	255	294	1319	1813	175	420	478

\*Excluding TO & Cable