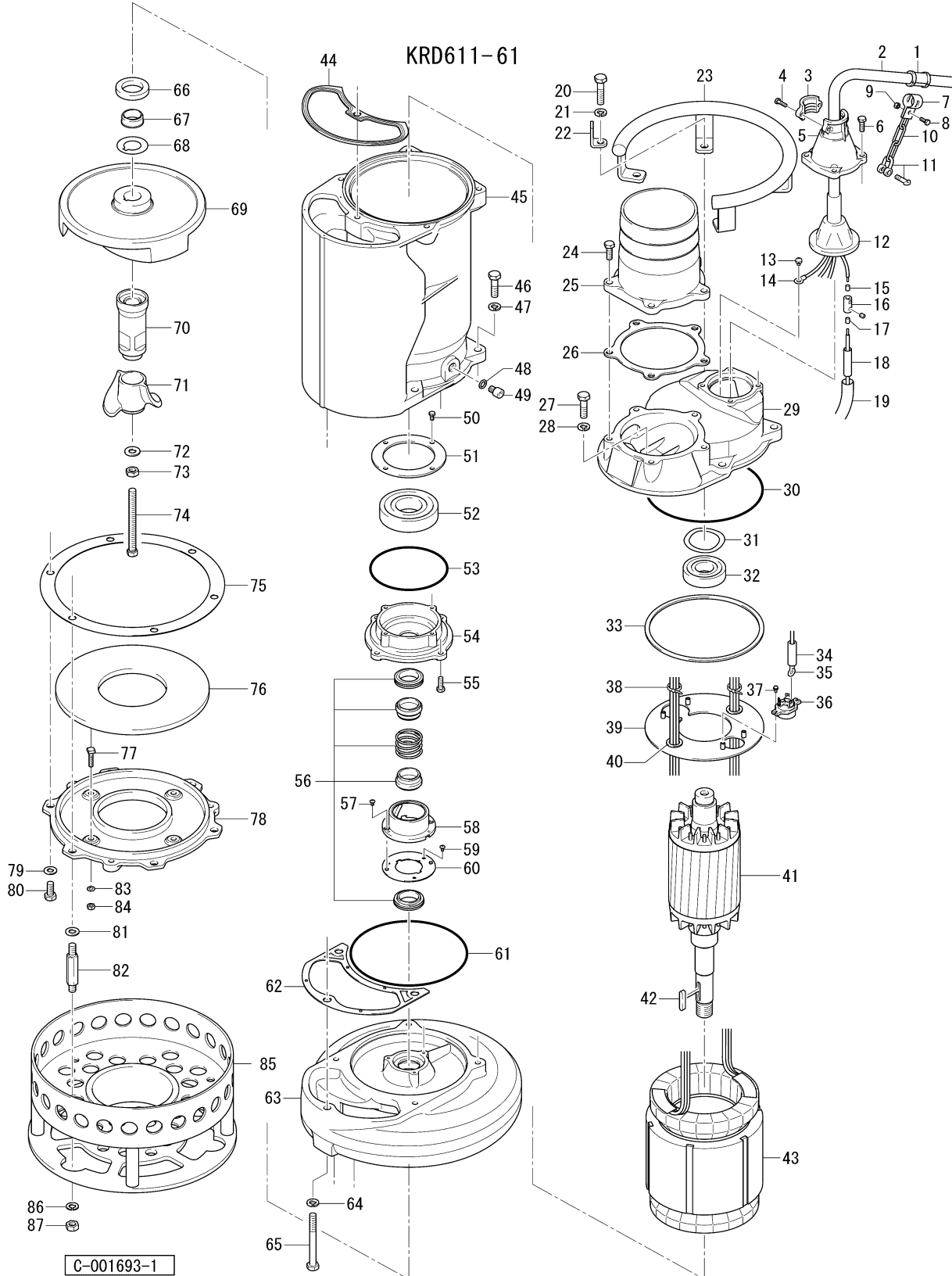


PARTS LIST		DEWATERING PUMP			9/29/2023	
ITEM	PART No.	DESCRIPTION	QTY	SIZE	MATERIAL	NOTES
1	010-122-10	Cable Clip Rubber	1	No.2	NBR	
2	001-517-37	Cabtyre Cable Set (50') 60Hz (USA)	1	2PNCTF4Cx8mm2	KR-3	
3	070-107-18	Cable Clamp	1		FC150	included in ITEM#2 Cable Ass'y
4	140-035-14	Hex.Bolt	2	M6x20	SUS304	included in ITEM#2 Cable Ass'y
5	006-127-15	Stuffing Box	1	No.3	FC200	included in ITEM#2 Cable Ass'y
6	140-055-10	Hex.Bolt	4	M8x25	SUS304	
7	010-120-18	Cable Clip	1	No.2-1	SPC	
8	140-033-12	Hex.Bolt	1	M6x16	SUS304	
9	141-004-17	Hex.Nut	1	M6	SUS304	
10	095-000-99	Chain	1	4mm(3L)L=29.4	SS	
11	011-000-44	Shackle	1	#5(for Clip)	SS	
12	008-147-17	Mould Cover	1	KR3-9	CR	included in ITEM#2 Cable Ass'y
13	143-000-76	Pan Screw (w/Spring Washer/Plain Washer)	1	M6x10	SWRM	
14	009-106-17	Terminal	1	R-8-6	CU	
15	009-129-16	Terminal	3	E (Small)	CU	
16	009-118-12	Terminal (C/W Screw)	3	d12x(d8xd8)x25l	C3604	
17	009-128-15	Terminal	3	E (middle)	CU	
18	002-135-14	Heat Shrink Tube (Sold per meter)	m	A(d15x0.3t)	(Vm)	
19	002-132-11	Heat Shrink Tube (Sold per meter)	m	A4(d17x0.27t)	(Vm)	
20	140-102-13	Hex.Bolt	4	M12x55	SUS304	
21	142-165-10	Spring Washer	4	M12	SUS304	
22	070-117-11	L-Shape Fitting	1	40x25x4.5t d13Hole	SPC	
23	068-000-84	Handle	1	JT1-4-11-KRS	SGPSS	
24	140-076-17	Hex.Bolt	5	M10x30	SUS304	
25	032-254-13	Hose Coupling	1	NPT-6(KRS)	FC	
26	121-547-15	Packing	1	PC190,150MM(KRS-611S)	NBR	*
27	140-100-11	Hex.Bolt	1	M12x45	SUS304	
28	142-165-10	Spring Washer	1	M12	SUS304	
29	050-001-38	Motor Bracket	1		FC200	
30	122-153-13	O-Ring	1	G-220(219.3xd5.7)	NBR	*
31	142-199-13	Wave Washer	1	6208/6307	SK5	
32	052-110-18	Bearing	1	6307ZZC3		
33	121-002-13	Packing (Protection Plate)	1	d208xd224x3 t	NBR	
34	002-000-38	Protection Tube	m	ESG-1U,#3/8,d9.8	(Vm)	
35	009-107-18	Terminal	3	R-14-6	CU	
36	053-002-39	Motor Protector 208/230V-60Hz(USA)	1	KA315-JLXL00	(B.C)	
36	053-398-15	Motor Protector 460V-60Hz(USA)	1	KA314-HLYL00	(B.C)	

PARTS LIST		DEWATERING PUMP			9/29/2023	
ITEM	PART No.	DESCRIPTION	QTY	SIZE	MATERIAL	NOTES
36	053-192-17	Motor Protector 575V-60Hz(USA)	1	KA314-HKXL00	(B.C)	
37	143-125-11	Pan Screw (w/SW/PW)	2	M4x14	SWRM	
38	181-000-03	Cable Tie	2	T50S,158Lx4.7Bx35D	Nylon	
39	058-000-52	Lead Wire Protection Plate	1	d102xd224x1.6 t	SPHC	
40	016-000-24	Lead Wire Protection Bush	2	TM-NG-79-N	Synthetic Rubber	
41	055-003-86	Rotor	1Set			
42	147-021-18	Impeller Key	1	8x8x44L	SUS420	
43	056-012-14	Stator 208/230V-60Hz(USA)	1Set			
43	056-012-15	Stator 460V-60Hz(USA)	1Set			
43	056-012-58	Stator 575V-60Hz(USA)	1Set			
44	121-002-01	Packing (Water Way, Upp.)	1	JT1-4-11-KR6	NBR	*
45	064-001-60	Motor Frame	1		FC200	
46	140-100-11	Hex.Bolt	4	M12x45	SUS304	
47	142-165-10	Spring Washer	4	M12	SUS304	
48	121-247-12	Packing	1	d12.3xd18x2t	Polyethylene	*
49	035-113-18	Oil Plug	1	M12x14	SUS304	
50	140-030-35	Hex.Bolt	4	M6x12	SWRM	
51	062-000-36	Bearing Fixing Plate	1	#6310(PC124)	SS	
52	052-001-09	Bearing	1	6310ZCC3(SRL)		
53	122-140-17	O-Ring	1	G-145(144.4xd3.1)	NBR	*
54	060-002-14	Bearing Housing	1		FC200	
55	140-055-49	Hex.Bolt	4	M8x25	SWRM	
56	025-195-39	Mechanical Seal	1	H-35	SIC	
57	143-070-23	Pan Screw	2	M5x6	SWRM	
58	030-156-18	Oil Lifter	1	H-35(A)(T)	Resin	
59	143-070-10	Pan Screw	3	M5x6	SWRM	
60	030-150-12	Seal Stopper	1	H-35(A)(T)	SPCC	
61	122-311-11	O-Ring	1	220xd3.5	NBR	*
62	121-129-17	Packing (Water Way, Low.)	1	KRS-7.5/11(T)	NBR	*
63	020-380-12	Pump Casing	1	KRS(2)-B6/C6/D6(KRS-75)	FC200	
64	142-165-10	Spring Washer	1	M12	SUS304	
65	140-113-17	Hex.Bolt	1	M12x120	SUS304	
66	026-123-13	Oil Seal	1	TC-406211	NBR	
67	071-128-47	Shaft Sleeve	1	KRS-7.5/11KW	SUS403	
68	040-110-24	Impeller Shim		d32.5xd58x0.3t	SUS304	
69	021-572-16	Impeller (60Hz)	1	KRD611-61	HiCrFC	
		Impeller (50Hz) OPTION	1	KRD611-51	HiCrFC	50Hz OPTION

PARTS LIST		DEWATERING PUMP			9/29/2023	
ITEM	PART No.	DESCRIPTION	QTY	SIZE	MATERIAL	NOTES
70	024-126-23	Connection Rod	1	KRS-100	FCMB	
71	024-120-14	Agitator	1	GPN-80	HiCrFC	
72	142-130-16	Plain Washer	1	M16	SUS304	
73	141-008-40	Hex.Nut	1	M16(H=10)	SUS304	
74	140-139-19	Hex.Bolt	1	M16x143(B=19)	SUS304	
75	120-112-14	Packing (S.Cover)		d260xd314x0.5t	Polyethylene	
76	033-110-19	Suction Plate	1	KRS-100	HiCrFC	
77	140-001-08	Square Bolt	3	M8x35	SUS304	
78	022-420-24	Suction Cover	1	KRS-100	FC200	
79	142-129-12	Plain Washer	3	M12	SUS304	
80	140-097-14	Hex.Bolt	3	M12x30	SUS304	
81	142-129-12	Plain Washer	3	M12	SUS304	
82	144-478-15	Stud Bolt	3	M12x111(25/21)	SUS403	
83	142-163-18	Spring Washer	3	M8	SUS304	
84	141-005-18	Hex.Nut	3	M8	SUS304	
85	023-001-85	Strainer Stand	1	KRS-100(189mm)	SGP+SS	
86	142-165-10	Spring Washer	3	M12	SUS304	
87	141-007-10	Hex.Nut	3	M12	SUS304	
	173-004-00	Packing O-Ring Set	1Set	(Marked by *)		
26	121-547-15	Packing (Hose Coupling)	1	PC190,150MM(KRS-611S)	NBR	*
30	122-153-13	O-Ring (M.Bracket/M.Frame)	1	G-220(219.3xd5.7)	NBR	*
44	121-002-01	Packing (Water Way, Upp.)	1	JT1-4-11-KR6	NBR	*
48	121-247-12	Packing (Oil Plug)	1	d12.3xd18x2t	Polyethylene	*
53	122-140-17	O-Ring (Brg.Housing/M.Frame)	1	G-145(144.4xd3.1)	NBR	*
61	122-311-11	O-Ring (M.Frame/P.Casing)	1	220xd3.5	NBR	*
62	121-129-17	Packing (Water Way, Low.)	1	KRS-7.5/11(T)	NBR	*
		Lubricant		Turbine Oil VG32 2,300ml		

PARTS LIST		DEWATERING PUMP			9/29/2023	
ITEM	PART No.	DESCRIPTION	QTY	SIZE	MATERIAL	NOTES



* Indicates items included in set