

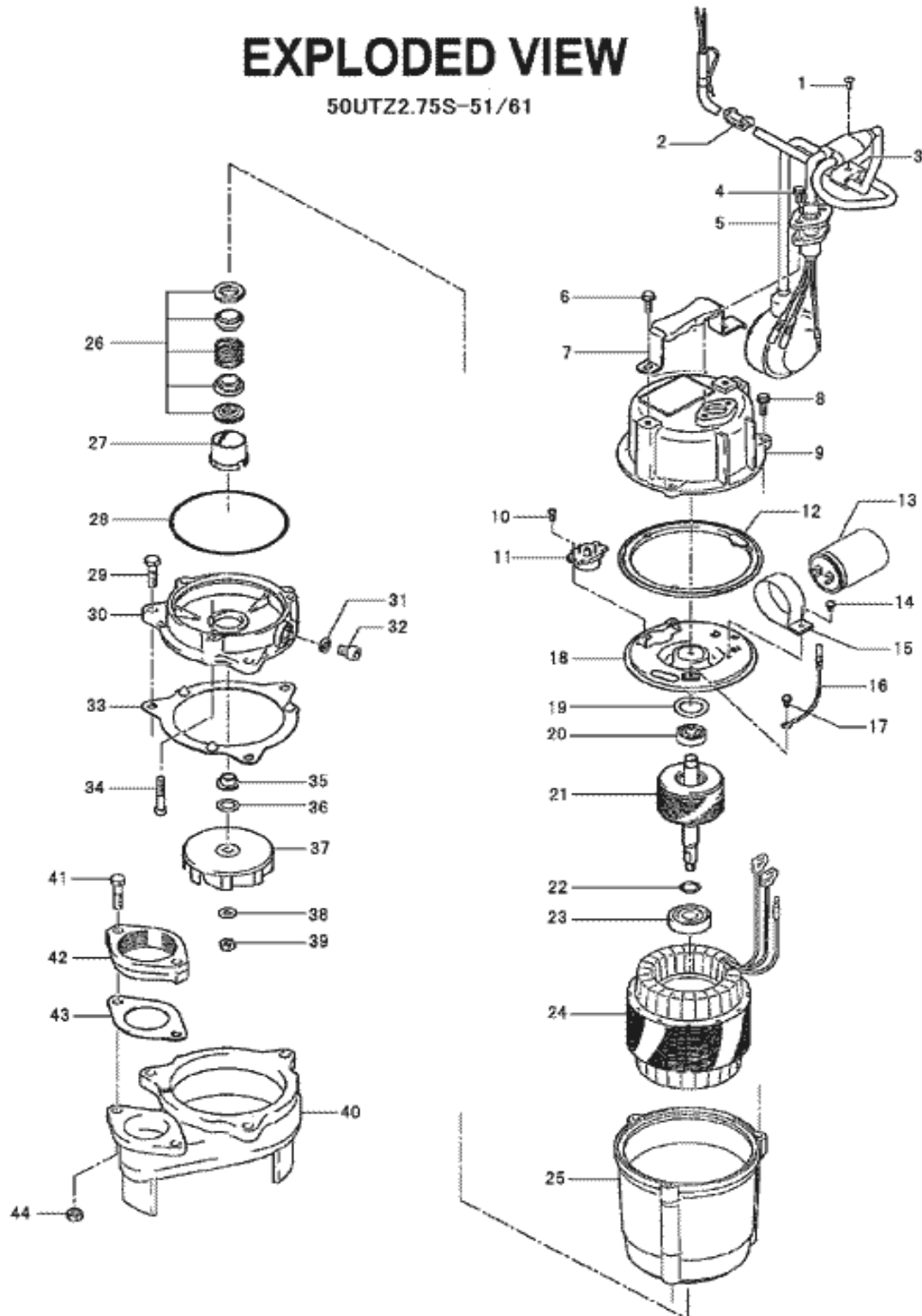
PARTS LIST		SEWER & WASTEWATER PUMPS			2/16/2021	
ITEM	PART No.	DESCRIPTION	QTY	SIZE	MATERIAL	NOTES
1	143-000-27	Pan Tapping Screw	1	M4x16	SUS304	
2	010-163-16	Cable Clip Rubber	1	HS2.4S	NBR	
3	109-000-11	Float Support Bush	1	d9/d9	Resin	
4	140-427-17	Hex.Bolt (w/Plain Washer)	2	M5x15	SUS304	
5	001-003-39	Cabtyre Cable Set (32') 110V	1	VCT3Cx2mm2	LB	
	001-003-36	Cabtyre Cable Set (32') 220V	1	VCT3Cx2mm2	LB	
6	140-451-10	Hex.Bolt (w/Plain Washer)	2	M6x16	SUS304	
7	068-272-18	Handle	1	HS2.4(S)-50/60	SPCNR	
8	140-396-16	Hex.Bolt (w/Plain Washer)	3	M6x20	SUS304	
9	051-000-40	Motor Head Cover	1		FC	
10	143-000-43	Truss Screw	2	M4x8	SWRM	
11	053-001-68	Motor Protector 110-60Hz	1	KA112-BBXL00J	(T.C)	
	053-001-69	Motor Protector 220-60Hz	1	KA112-BAXL09	(T.C)	
12	121-000-84	Packing	1		NBR	*
13	076-000-40	Capacitor 110V-60Hz	1	SH-CAP_50MF-270VAC		
	076-000-41	Capacitor 220V-60Hz	1	SH-CAP_15MF-500VAC(four terminals)		
14	143-085-21	Pan Screw (w/Spring Washer)	1	M4x6	SWRM	
15	127-000-46	Capacitor Fixing Plate	1		SPC	
16	009-001-02	Earth Terminal	1Set	UL1015-AWG18,G/Y,L=160		
17	143-000-44	Pan Screw (w/Spring Washer)	1	M4x5	C3604	
18	050-000-61	Motor Bracket	1		SECD	
19	142-192-16	Wave Washer	1	6201(D=32,t=0.4)	SK5	
20	052-100-15	Bearing	1	6201ZZC3		
21	055-001-73	Rotor	1Set	w/Bearing		
22	061-180-17	Bearing Collar	1	d15.1xd20x1.6t	SS	
23	052-152-12	Bearing	1	6302ZZC3		
24	056-005-17	Stator 115V-60Hz	1Set			
24	056-005-18	Stator 230V-60 Hz	1Set			
25	064-000-94	Motor Frame	1		FC	
26	025-291-10	Mechanical Seal	1	W-14VL	SiC+CCBN	
27	030-000-09	Oil Lifter	1	W-14VL	Resin	
28	122-133-17	O-Ring	1	G-110(109.4xd3.1)	NBR	*
29	140-056-11	Hex.Bolt	3	M8x30	SUS304	
30	029-000-58	Oil Casing	1	HS2.4(S)-52/62	FC	
31	121-246-11	Packing	1	d10.3xd16x2t	PE	*
32	035-124-12	Oil Plug	1	M10x15	SUS304	
33	121-000-20	Packing	1	HS-4E	NR	*
34	140-256-13	Hex.Socket Cap Bolt	3	M6x35	SUS304	

PARTS LIST		SEWER & WASTEWATER PUMPS			2/16/2021	
ITEM	PART No.	DESCRIPTION	QTY	SIZE	MATERIAL	NOTES
35	071-292-14	Shaft Sleeve	1	LB3-250/480	SUS304	
36	142-354-18	Conical Spring Washer	1	d11.2xd22.5x0.8t	SUS304	
37	021-G28-21	Impeller (60Hz)	1	50UTZ2.75S-61	Resin	
	021-008-58	Impeller (50Hz) OPTION	1	50UTZ2.75S-51	Resin	50Hz OPTION
38	142-127-10	Plain Washer	1	M8	SUS304	
39	141-005-18	Hex.Nut	1	M8	SUS304	
40	020-001-85	Pump Casing	1	40UT2.4S-51/61	FC	
41	140-059-14	Hex.Bolt	2	M8x45	SUS304	
42	048-131-12	Screwed Flange	1	50mm(P.C.84)	FC	
43	121-138-19	Packing	1	LB(P.C.84)	NBR	*
44	141-005-18	Hex.Nut	2	M8	SUS304	
	173-001-35	Packing O-Ring Set	1Set	(Marked by *)		
12	121-000-84	Packing (Head Cover/M.Frame)	1		NBR	*
28	122-133-17	O-Ring (M.Frame/O.Casing)	1	G-110(109.4xd3.1)	NBR	*
31	121-246-11	Packing (Oil Plug)	1	d10.3xd16x2t	PE	*
33	121-000-20	Packing (O.Casing/P.Casing)	1	HS-4E	NR	*
43	121-138-19	Packing (Hose Coupling)	1	LB(P.C.84)	NBR	*
		Lubricant		Turbine Oil VG32 160ml		

PARTS LIST		SEWER & WASTEWATER PUMPS				2/16/2021
ITEM	PART No.	DESCRIPTION	QTY	SIZE	MATERIAL	NOTES

EXPLODED VIEW

50UTZ2.75S-51/61



№ C-01289-1

* Indicates items included in set



MODEL 50UTZ2.75S-61

PARTS LIST		SEWER & WASTEWATER PUMPS			2/16/2021	
ITEM	PART No.	DESCRIPTION	QTY	SIZE	MATERIAL	NOTES
	<u>NO. 50UTZ2.75S-61</u>					