

PARTS LIST		HIGH HEAD DEWATERING PUMP			11/8/2019	
ITEM	PART No.	DESCRIPTION	QTY	SIZE	MATERIAL	NOTES
1	001-844-36	Cabletyre Cable Set (50') 60Hz (USA)	1	2PNCTF4Cx8mm2	GHZ	
2	010-122-10	Cable Clip Rubber	1	No.2	NBR	
3	010-120-18	Cable Clip	1	No.2-1	SPC	
4	141-004-59	Hex.Nut	1	M6	SWRM	
5	140-032-37	Hex.Bolt	1	M6x15	SWRM	
6	095-000-95	Chain	1	4mm(4L)	SS	replaces OLD# 095-131-18 (3L)
7	011-110-11	Shackle	1	6mm(M8,SC)	SS	
8	140-076-17	Hex.Bolt	2	M10x30	SUS304	
9	003-183-23	Gland	1	GHZ-311W	FC	
10	002-103-26	Cable Protection Tube	1	No.3	NR	
11	005-122-17	Bush Washer	2	d23xd53.5x3.2t	SPC	
12	004-129-11	Cable Bush	1	d22.5xd54x25l	NBR	
13	140-055-10	Hex.Bolt	4	M8x25	SUS304	
14	006-160-10	Stuffing Box	1	GHZ-311W	FC	
15	122-128-19	O-Ring	1	G-85(84.4xd3.1)	NBR	*
16	009-129-16	Terminal	4	E (Small)	CU	
17	009-101-12	Terminal(C/W Screw)	4	d12x(d6.6xd6.6)x25l	C3604	
18	009-129-16	Terminal	4	E (Small)	CU	
19	002-129-15	Heat Shrink Tube (Sold per meter)	m	EVA(d14x1t)	(Vm)	
20	002-132-11	Heat Shrink Tube (Sold per meter)	m	A4(d17x0.27t)	(Vm)	
21	037-427-14	Center-Flange Discharge Pipe	1	LH47.5/411-51/61	FCD	
21-1	140-130-10	Hex.Bolt	8	M16x70	SUS304	companion flange; not shown
21-2	048-139-10	Screwed Flange	1	NPT-4(JIS10K)	FC	companion flange; not shown
21-3	121-106-34	Packing 4"	1	JIS10K x NPT 4"	NBR	companion flange; not shown
21-4	142-166-11	Spring Washer	8	M16	SUS304	companion flange; not shown
21-5	141-008-11	Hex.Nut	8	M16	SUS304	companion flange; not shown
22	141-007-10	Hex.Nut	4	M12	SUS304	
23	142-165-10	Spring Washer	4	M12	SUS304	
24	121-373-18	Packing	1	P.C.133xd100x1t	THREE SHEET	*
25	144-000-46	Stud Bolt	4	M12x64(24/27)	SUS304	
26	140-095-12	Hex.Bolt	1	M12x20	SUS304	
27	142-165-10	Spring Washer	1	M12	SUS304	
28	070-103-10	L-Shape Fitting	1	KT-55	SPC	
29	140-096-13	Hex.Bolt	2	M12x25	SUS304	
30	142-165-10	Spring Washer	2	M12	SUS304	
	142-129-12	Plain Washer	2	M12	SUS304	
31	127-281-16	Stay (Left)	1	LH47.5/411-51/61	SS	
32	127-280-15	Stay (Right)	1	LH47.5/411-51/61	SS	
33	140-097-14	Hex.Bolt	2	M12x30	SUS304	

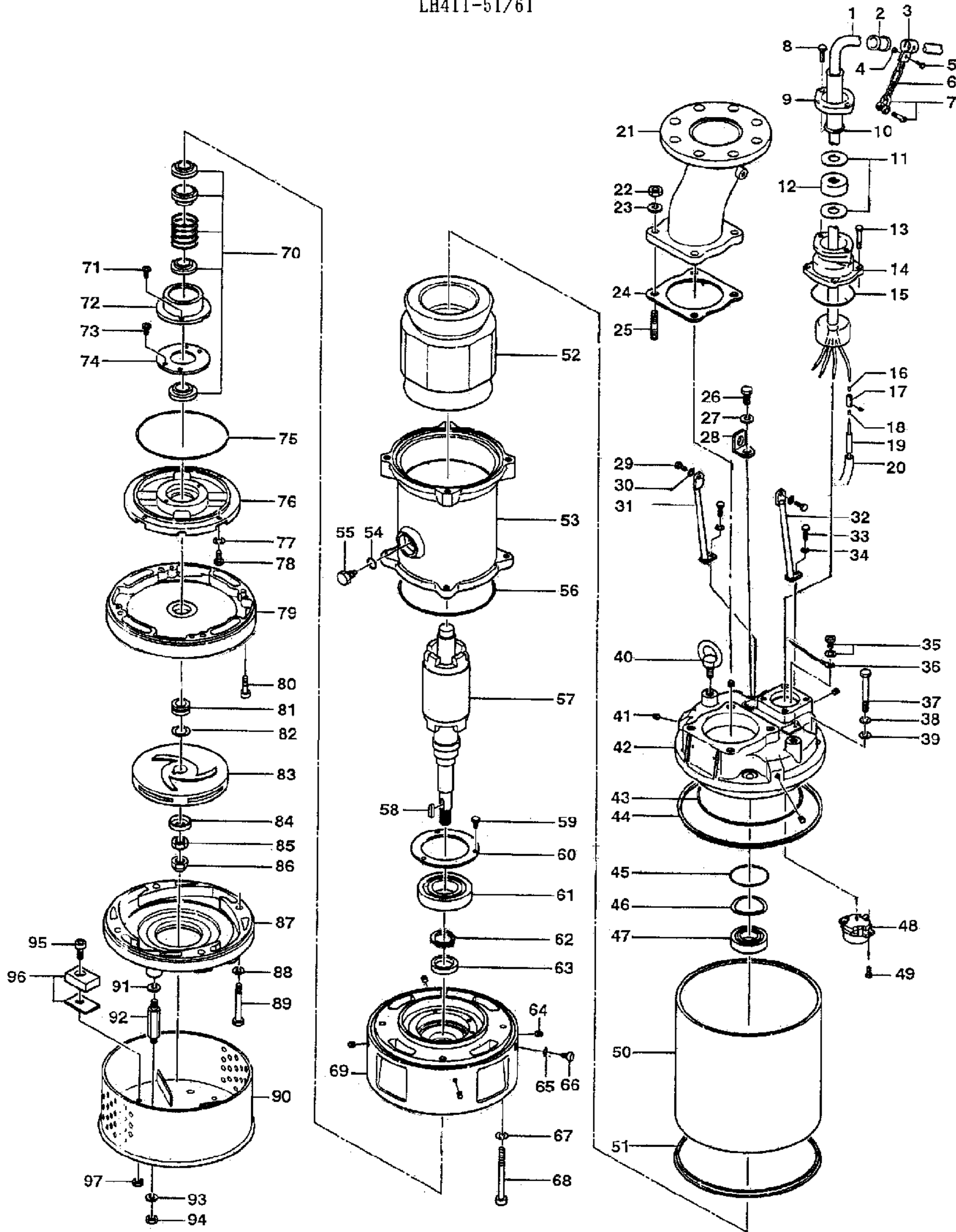
PARTS LIST		HIGH HEAD DEWATERING PUMP			11/8/2019	
ITEM	PART No.	DESCRIPTION	QTY	SIZE	MATERIAL	NOTES
34	142-165-10	Spring Washer	2	M12	SUS304	
35	143-086-22	Pan Screw (w/Spring Washer)	1	M4x8	SWRM	
36	009-166-15	Earth Terminal	1Set	8mm2x190L		
37	140-112-16	Hex.Bolt	4	M12x110	SUS304	
38	142-165-10	Spring Washer	4	M12	SUS304	
39	142-298-13	Seal Washer	4	SM-12	SUS+NBR	*
40	072-107-27	Eye Bolt	2	M16	SUS304	
41	144-583-14	Hex. Socket Cap Screw	4	M8x10	SUS304	
42	050-493-12	Motor Bracket	1		FC	
43	122-149-16	O-Ring	1	G-190(189.3xd5.7)	NBR	*
44	121-592-15	Packing	1	LH47.5/411(L)	NBR	*
45	122-245-13	O-Ring	1	71.4xd3.1	NBR	*
46	142-198-12	Wave Washer	1	6306	SK5	
47	052-109-14	Bearing	1	6306ZZC3		
48		Motor Protector 220V-60Hz(USA)	1			
48	053-364-12	Motor Protector 440V-60Hz(USA)	1			
49	143-016-18	Pan Screw	2	M4x12	SWRM	
50	065-385-16	Outer Cover	1		SS	
51	121-592-15	Packing	1	LH47.5/411(L)	NBR	*
52		Stator 220V-60Hz(USA)	1Set			
52		Stator 440V-60Hz(USA)	1Set			
53	064-570-17	Motor Frame	1		FC	
54	122-259-10	O-Ring	1	12xd3	NBR	*
55	144-490-13	Stator Set Bolt	1	M12(B=21)	SUS403	
56	122-144-11	O-Ring	1	G-165(164.3xd5.7)	NBR	*
57	055-884-19	Rotor	1Set			
58	147-023-10	Impeller Key	1	7x7x32l	SUS420	
59	140-033-25	Hex.Bolt	3	M6x16	SWRM	
60	062-223-16	Bearing Fixing Plate	1	d92xd130x4.5t	SS	
61	052-112-10	Bearing	1	6309ZZC3		
62	146-027-11	Retaining Ring	1	C45	SK5	
63	026-217-15	Oil Seal	1	SC-35508	NBR	
64	144-583-14	Hex. Socket Cap Screw	4	M8x10	SUS304	
65	121-247-12	Packing	1	d12.3xd18x2t	PE	*
66	035-113-18	Oil Plug	1	M12x14	SUS304	
67	142-165-10	Spring Washer	4	M12	SUS304	
68	140-516-14	Hex.Socket Cap Bolt	4	M12x110	SUS304	
69	060-493-13	Bearing Housing	1		FC	
70	025-246-10	Mechanical Seal	1	H-30T	SiC	
71	143-070-23	Pan Screw	2	M5x6	SWRM	

PARTS LIST		HIGH HEAD DEWATERING PUMP			11/8/2019	
ITEM	PART No.	DESCRIPTION	QTY	SIZE	MATERIAL	NOTES
72	030-142-11	Oil Lifter	1	H-30(A)(T)	Resin	
73	143-070-10	Pan Screw	3	M5x6	SWRM	
74	030-151-13	Seal Stopper	1	H-30(A)(T)	SPCC	
75	122-333-19	O-Ring	1	170xd3.1	NBR	*
76	029-397-19	Oil Casing	1	LH47.5/411/615-51/61	FC	
77	142-163-18	Spring Washer	4	M8	SUS304	
78	140-055-10	Hex.Bolt	4	M8x25	SUS304	
79	020-000-30	Upper Pump Casing (w/Labyrinth Ring)	1	LH47.5/411-51/61	FC	
80	140-270-13	Hex.Socket Cap Bolt	4	M8x30	SUS304	
81	040-107-28	Impeller Shim		d25.2xd38x0.3t	SUS304	
82	071-000-02	Shaft Sleeve	1	LH47.5/411/615-51/61	SUS403	
83	021C9916	Impeller (60Hz)	1	LH411-61	HiCrFC	
84	047-105-27	Impeller Thread Protect.Cover	1	No.4(22)	SUS304	
85	141-009-38	Hex.Nut	1	M20(H=12)	SUS304	
86	141-034-16	Hex.Cap Nut	1	M20	SUS304	
87	020-000-31	Lower Pump Casing (w/Mouth Ring)	1	LH47.5/411-51/61	FC	
88	142-165-10	Spring Washer	4	M12	SUS304	
89	140-109-10	Hex.Bolt	4	M12x90	SUS304	
90	023-001-28	Strainer Stand	1	LH47.5/411-51/61	SS	interchangeable with OLD part# 023-543-14
91	142-164-19	Spring Washer	4	M10	SUS304	
92	144-000-09	Stud Bolt	4	M10x94(20/14)	SUS403	
93	142-164-19	Spring Washer	4	M10	SUS304	
94	141-006-19	Hex.Nut	4	M10	SUS304	
95	140-268-18	Hex.Socket Cap Bolt	4	M8x20	SUS304	
96	043-100-17	Cathodic Protection Plate	4	DW(50x34x20t)	ZNP	
97	141-005-18	Hex.Nut	4	M8	SUS304	
	173-000-19	<b>Packing O-Ring Set</b>	1Set	(Marked by *)		
15	122-128-19	O-Ring	1	G-85(84.4xd3.1)	NBR	*
24	121-373-18	Packing	1	P.C.133xd100x1t	THREE SHEET	*
39	142-298-13	Seal Washer	4	SM-12	SUS+NBR	*
43	122-149-16	O-Ring	1	G-190(189.3xd5.7)	NBR	*
44	121-592-15	Packing	1	LH47.5/411(L)	NBR	*
45	122-245-13	O-Ring	1	71.4xd3.1	NBR	*
51	121-592-15	Packing	1	LH47.5/411(L)	NBR	*
54	122-259-10	O-Ring	1	12xd3	NBR	*
56	122-144-11	O-Ring	1	G-165(164.3xd5.7)	NBR	*
65	121-247-12	Packing	1	d12.3xd18x2t	PE	*
75	122-333-19	O-Ring	1	170xd3.1	NBR	*
		Lubricant		Turbine Oil VG32 2,500ml		

PARTS LIST		HIGH HEAD DEWATERING PUMP			11/8/2019	
ITEM	PART No.	DESCRIPTION	QTY	SIZE	MATERIAL	NOTES

## EXPLODED VIEW

LH411-51/61



C-00457-1



MODEL **LH411-61**

PARTS LIST		HIGH HEAD DEWATERING PUMP			11/8/2019	
ITEM	PART No.	DESCRIPTION	QTY	SIZE	MATERIAL	NOTES