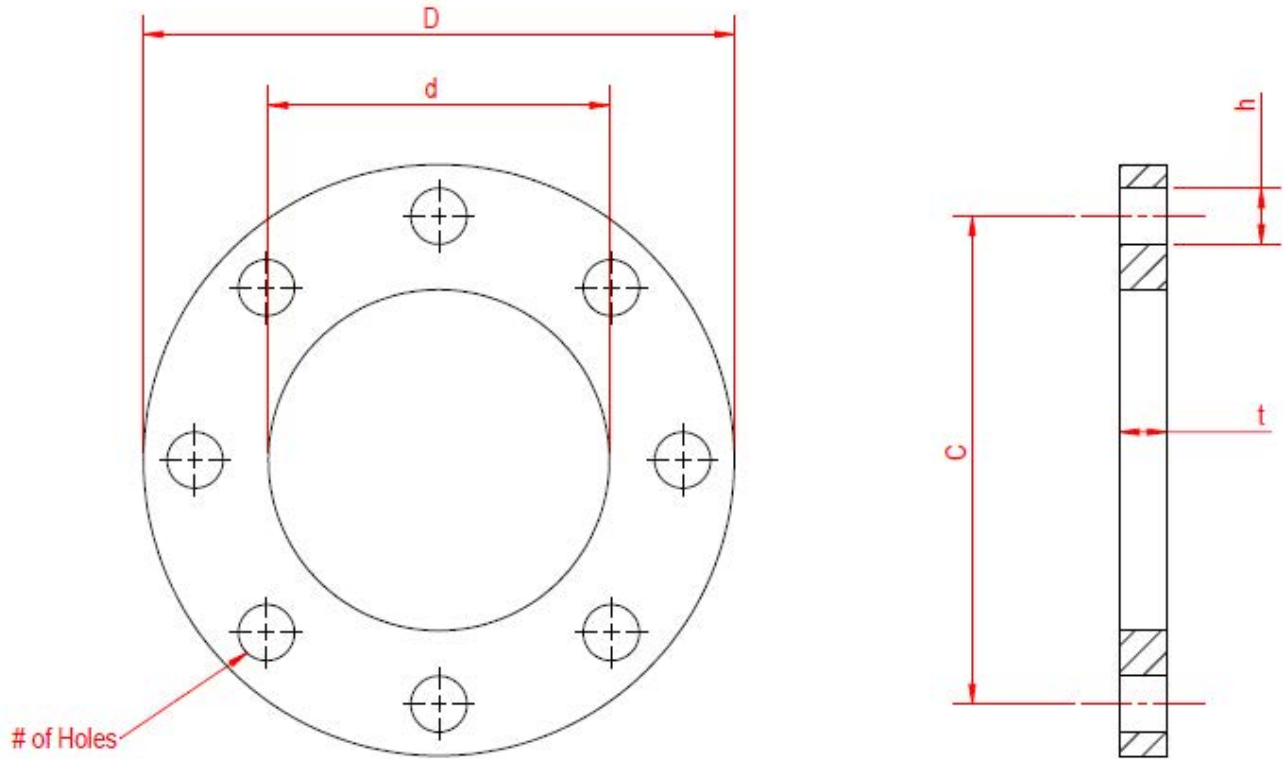


JIS10K TO ANSI 300# FLANGE CONVERSION GUIDE



Nominal Pipe Size (d)	Diameter of Flange (D)	Flange Thickness (t)	# of Bolts	For Bolt Size	Diameter of Bolt Holes (h)	Diameter of Bolt Circle (C)
High Pressure [ANSI 300# (in), JIS10K (mm)]*						
2in	6-1/2	13/16	8	5/8	3/4	5
50mm	6.10 (155mm)	0.63 (16mm)	4	M12	0.75 (19mm)	4.72 (120mm)
3in	8-1/4	1-1/16	8	3/4	7/8	6-5/8
80mm	7.28 (185mm)	0.71 (18mm)	8	M16	0.75 (19mm)	5.91 (150mm)
4in	10	1-3/16	8	3/4	7/8	7-7/8
100mm	8.27 (210mm)	0.71 (18mm)	8	M16	0.75 (19mm)	6.89 (175mm)
6in	12-1/2	1-3/8	12	3/4	7/8	10-5/8
150mm	11.02 (280mm)	0.87 (22mm)	8	M20	0.91 (23mm)	9.45 (240mm)
8in	15	1-9/16	12	7/8	1	13
200mm	12.99 (330mm)	0.87 (22mm)	12	M20	0.91 (23mm)	11.42 (290mm)
10in	17-1/2	1-13/16	16	1	1-1/8	15-1/4
250mm	15.75 (400mm)	0.94 (24mm)	12	M22	0.98 (25mm)	13.98 (355mm)
12in	20-1/2	1-15/16	16	1-1/8	1-1/4	17-3/4
300mm	17.52 (445mm)	0.94 (24mm)	16	M22	0.98 (25mm)	15.75 (400)
14in	23	2-1/16	20	1-1/8	1-1/4	20-1/4
350mm	19.29 (490mm)	1.02 (26mm)	16	M22	0.98 (25mm)	17.52 (445mm)
16in	25-1/2	2-3/16	20	1-1/4	1-3/8	22-1/2
400mm	22.05 (560mm)	1.10 (28mm)	16	M24	1.06 (27mm)	20.08 (510mm)