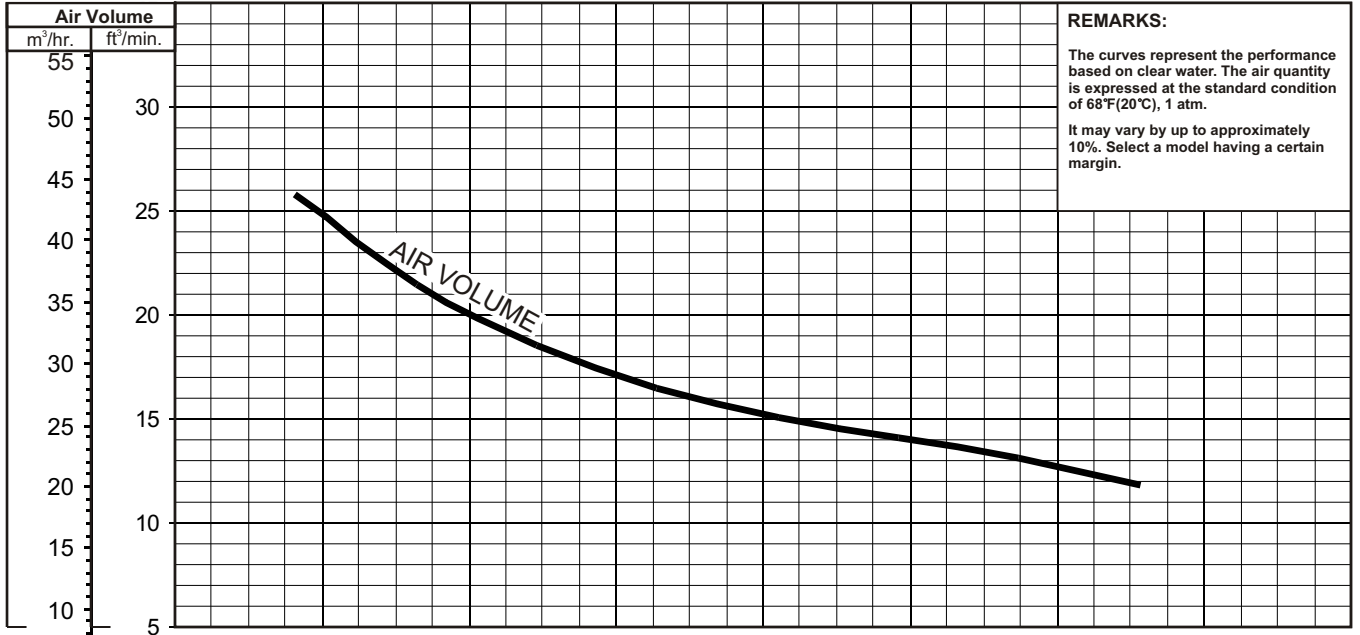




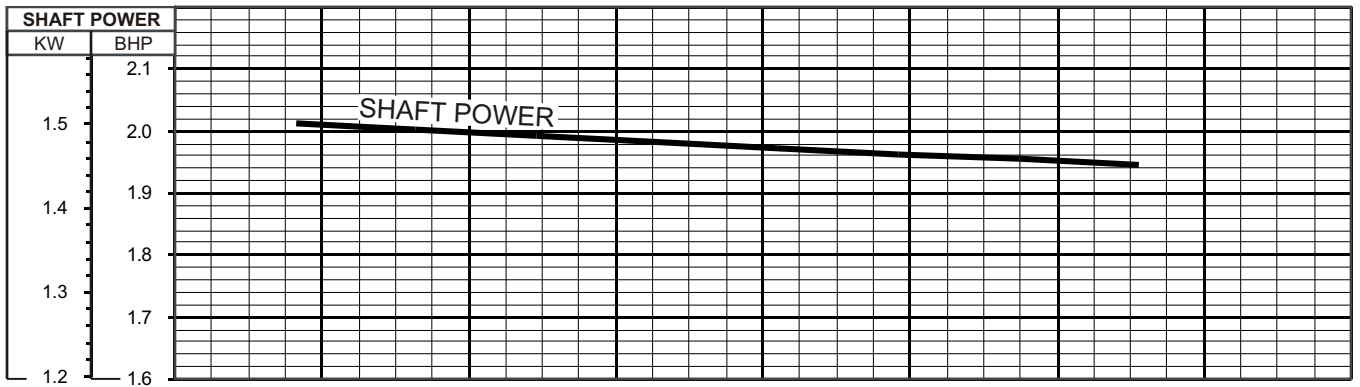
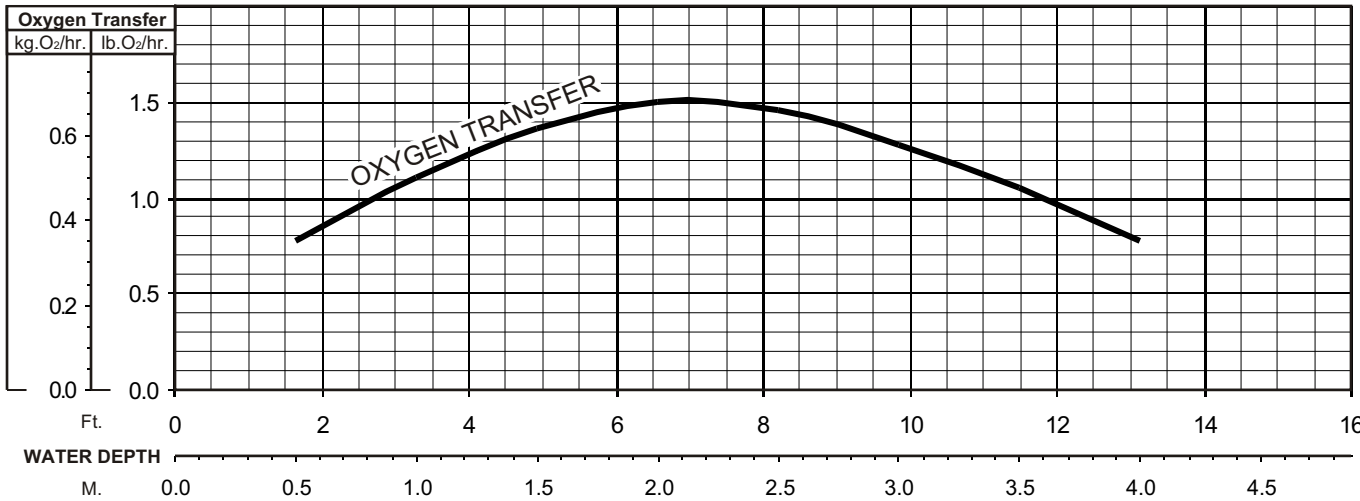
# BER - SERIES SUBMERSIBLE - EJECTOR / AERATOR

# PERFORMANCE CURVE

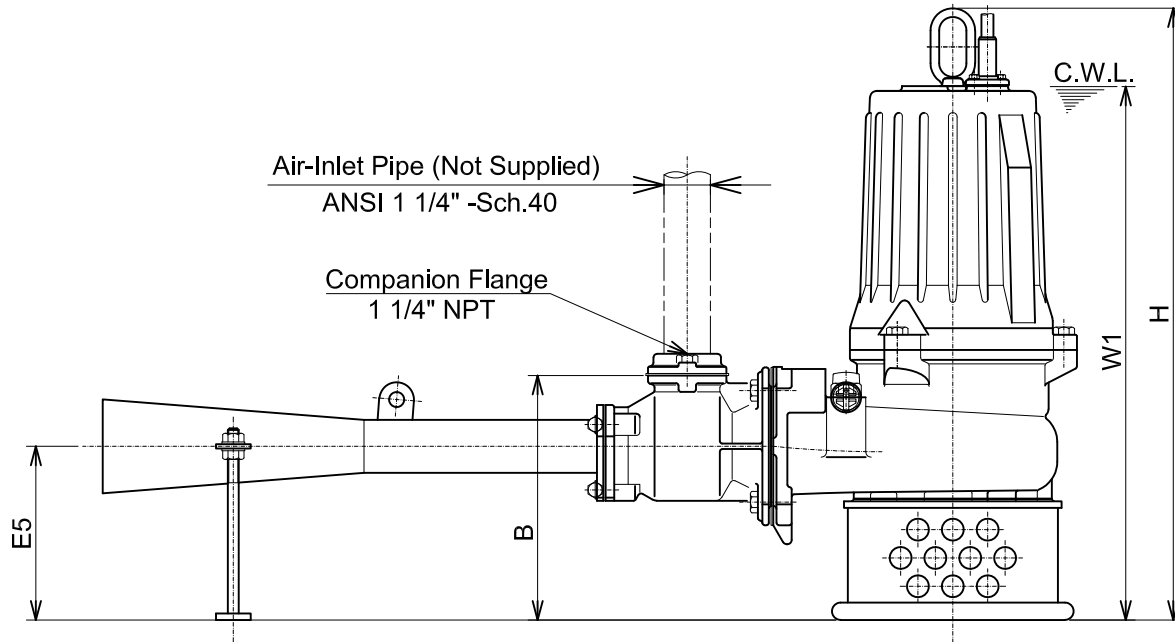
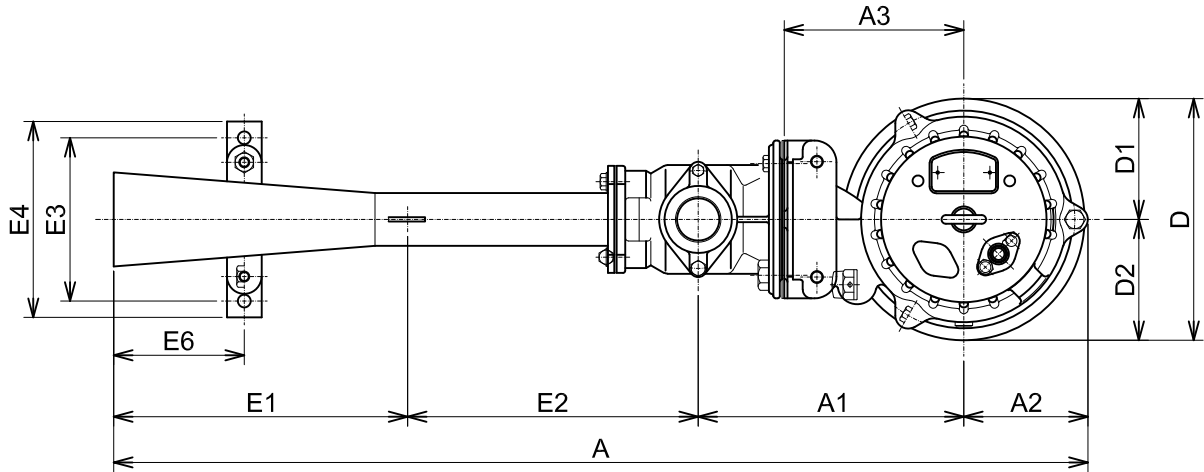
MODEL	AIR INLET BORE	HP	KW	RPM	SOLIDS DIA	LIQUID	SG.	VISCOSITY	TEMP.
(TOS-)15-BER3	1 1/4" / 32mm	2	1.5	3400	0.787"/20mm	Water	1.0	1.123 cSt.	68°F
MIXING AREA	MAX. DEPTH	PHASE	VOLTAGE	AMPERAGE	HZ	STARTING METHOD	INS. CLASS		
151 ft <sup>2</sup> / 14.0 m <sup>2</sup>	13.1 ft / 4.0 m	Three	208-230 / 460	6.2-5.9 / 3.1	60	Direct On Line	F		
CURVE No.	DATE	PHASE	VOLTAGE	AMPERAGE	HZ	STARTING METHOD	INS. CLASS		
-	-	-	-	-	-	-	-		



**REMARKS:**  
The curves represent the performance based on clear water. The air quantity is expressed at the standard condition of 68°F(20°C), 1 atm.  
It may vary by up to approximately 10%. Select a model having a certain margin.



15-BER3



C.W.L. : Continuous running Water Level

**DIMENSIONS:USCS (Inch)**

Model	HP	Air-Inlet Dia.	Ejector Pump & Motor															C.W.L. W1	*Wt. (lbs.)
			A	A1	A2	A3	B	D	D1	D2	H	E1	E2	E3	E4	E5	E6		
15-BER3	2	1 1/4"	35 1/4	95/8	4 1/2	6 1/2	8 7/8	8 3/4	4 3/8	4 3/8	22 1/8	10 5/8	10 1/2	5 7/8	7 1/16	6 5/16	4 3/4	19 1/4	95

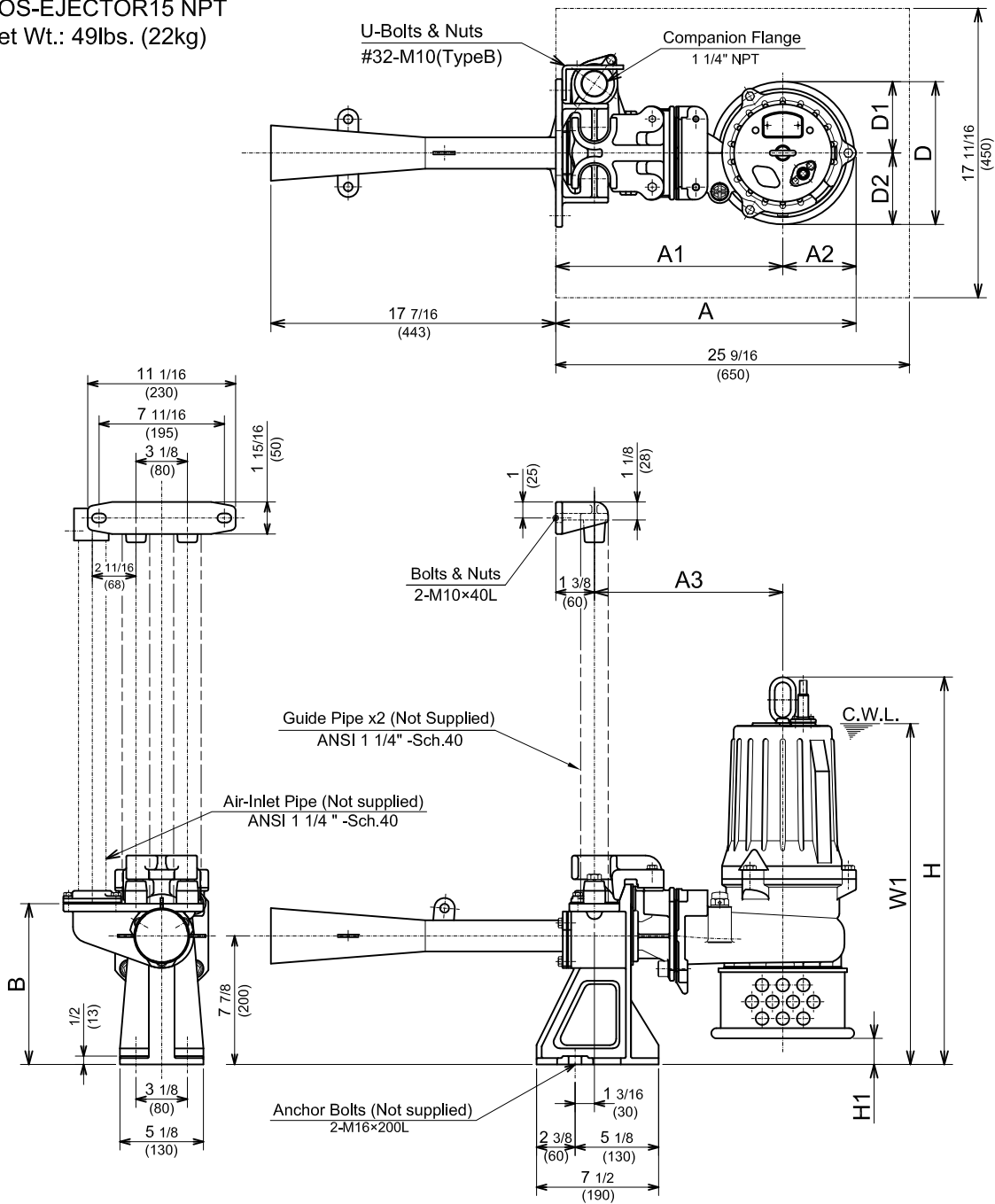
**DIMENSIONS:METRIC (mm)**

Model	kW	Air-Inlet Dia.	Ejector Pump & Motor															C.W.L. W1	*Wt. (kg)
			A	A1	A2	A3	B	D	D1	D2	H	E1	E2	E3	E4	E5	E6		
15-BER3	1.5	32	895	244	114	165	225	222	111	111	562	270	267	150	180	160	120	490	43

\*Excluding Cable

Guide Rail Ejector set  
Model: TOS-EJECTOR15 NPT  
Ejector set Wt.: 49lbs. (22kg)

**TOS-15BER3**



C.W.L. : Continuous running Water Level

**DIMENSIONS:USCS (Inch)**

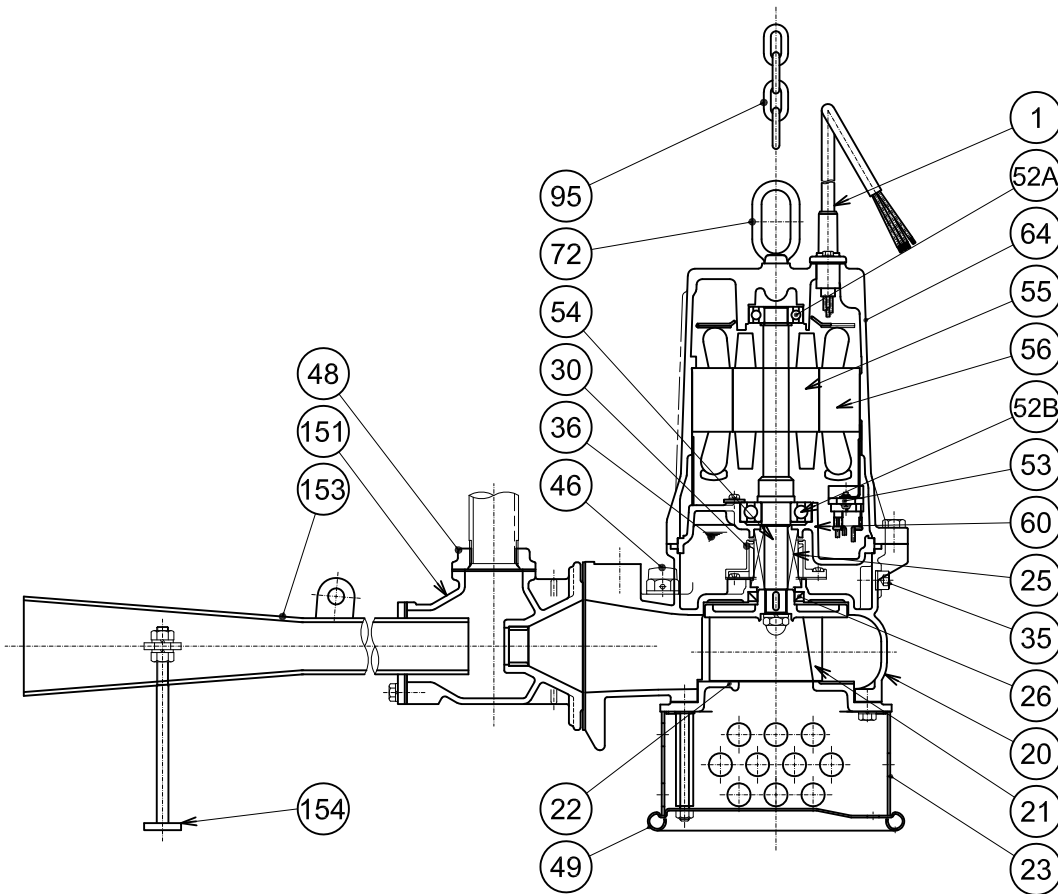
Model	HP	Air-Inlet Dia.	Ejector Pump & Motor									C.W.L.	*Wt. (lbs.)	
			A	A1	A2	A3	B	D	D1	D2	H			H1
TOS-15BER3	2	1 1/4"	18 3/8	13 7/8	4 1/2	11 9/16	9 13/16	8 3/4	4 3/8	4 3/8	23 3/4	1 5/8	20 7/8	75

**DIMENSIONS:METRIC (mm)**

\*Excluding Cable & Guide Rail System

Model	kW	Air-Inlet Dia.	Ejector Pump & Motor									C.W.L.	*Wt. (kg)	
			A	A1	A2	A3	B	D	D1	D2	H			H1
TOS-15BER3	1.5	32	467	353	114	293	250	222	111	111	603	41	530	34

**15-BER3**



PART#	DESCRIPTION	MAIN MATERIAL / NOTE	RELATED ASTM, AISI CODE	RELATED EN CODE	QTY
1	Power Cable	PVC Sheath AWG16/4- 32ft			1
20	Pump Casing	Cast Iron	A48M Class30B	EN 1561 GJL-200	1
21	Impeller	Cast Iron	A48M Class30B	EN 1561 GJL-200	1
22	Suction Cover	Cast Iron	A48M Class30B	EN 1561 GJL-200	1
23	Suction Strainer	Steel (Hot Rolled )	A1011	EN 10111	1
25	Mechanical Seal	Silicon Carbide / H-20A			1
26	Oil Seal	NBR / TC-32488			1
30	Oil Lifter	PBT Plastic w/(GF+MD)40			1
35	Oil Plug	Stainless Steel	S 30400	1.4301	1
36	Lubricant	Turbine Oil ISO VG32 or SAE 10W-20			
46	Air Valve	Nylon			1
48	Companion Flange	Cast Iron / NPT 1 1/4"	A48M Class30B	EN 1561 GJL-200	1
49	Bottom Plate	Steel (Cold Rolled )	A109/A1008	EN 10130	1
52A	Upper Bearing	6204ZC3			1
52B	Lower Bearing	6305ZC3			1
53	Motor Protector				1
54	Shaft	Stainless Steel	S 42000	1.4028	1
55	Rotor				1
56	Stator				1
60	Bearing Housing	Cast Iron	A48M Class25B	EN 1561 GJL-150	1
64	Motor Housing	Cast Iron	A48M Class25B	EN 1561 GJL-150	1
72	Lifting Lug Bolt	Stainless Steel	S 30400	1.4301	1
95	Chain	Steel - 16ft	A283 Grade D	EN 10025 S275	1
151	Suction Casing	Cast Iron	A48M Class30B	EN 1561 GJL-200	1
153	Diffuser	Stainless Steel	S 30400	1.4301	1
154	Diffuser Base	Stainless Steel	S 30400	1.4301	1