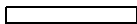


PARTS LIST		SEWAGE & WASTEWATER PUMP			6/7/2022	
ITEM	PART No.	DESCRIPTION	QTY	SIZE	MATERIAL	NOTES
1		Cabtyre Cable Set (32') 60Hz	1	2PNCT4Cx3.5mm2	KR-2	
2	140-035-14	Hex.Bolt	2	M6x20	SUS304	included in ITEM#1 Cable Ass'y
3	070-107-18	Cable Clamp	1		FC	included in ITEM#1 Cable Ass'y
4	140-056-11	Hex.Bolt	4	M8x30	SUS304	
5	142-163-18	Spring Washer	4	M8	SUS304	
6	006-126-14	Stuffing Box 60Hz	1	No.2	FC	included in ITEM#1 Cable Ass'y
7	008-142-12	Mould Cover 60Hz	1	KR2-7	CR	included in ITEM#1 Cable Ass'y
8	143-085-21	Pan Screw (w/Spring Washer)	1	M4x6	SWRM	
9	009-130-10	Terminal 60Hz	1	R-5.5-4	CU	included in ITEM#1 Cable Ass'y
10	009-275-18	Compression type Terminal 60Hz	3	TGNB-5.5(Insulated)	CU	included in ITEM#1 Cable Ass'y
11	072-102-22	Eye Bolt	2	M12	SUS304	
12	142-397-13	Washer		d13xd24x0.1t	SUS304	
	142-398-14	Washer		d13xd24x0.3t	SUS304	
13	140-078-19	Hex.Bolt	4	M10x35	SUS304	
14	142-164-19	Spring Washer	4	M10	SUS304	
15	050-000-41	Motor Bracket	1		FC200	
16	122-151-11	O-Ring	1	G-200(199.3xd5.7)	NBR	*
17	142-197-11	Wave Washer	1	6305	SK5	
18	052-000-21	Bearing (w/O-ring)	1	AC-6305ZZC3		
19	143-126-25	Pan Screw (w/Spring Washer/Plain Washer)	2	M4x12	SWRM	
20	053-196-11	Motor Protector 220V-60Hz	1	KA314-HLXL00	(B.C)	
20	053-001-63	Motor Protector 380/440/460V-60Hz	1	KA314-HRXL00	(H.C)	
21	058-184-11	Lead Wire Protection Plate	1	d90xd224x1.6t	SPHC	
22	055-032-91	Rotor	1Set			
22	055-000-07	Rotor	1Set			
23	147-163-13	Impeller Key	1	10x8x32L	SUS420	
24	056-009-21	Stator 220V-60Hz	1Set			
24	056-000-01	Stator 380/440/460V-60Hz	1Set			
25	002-000-02	Protection Tube	m	NFG-1A,d7	(Vm)	
26	009-000-31	Terminal	3	R-5.5-S4	CU	
27	140-079-10	Hex.Bolt	4	M10x40	SUS304	
28	142-164-19	Spring Washer	4	M10	SUS304	
29	064-000-51	Motor Frame	1		FC200	
30	122-151-11	O-Ring	1	G-200(199.3xd5.7)	NBR	*
31	140-000-06	Hex.Bolt (w/Spring Washer/Plain Washer)	3	M6x12	SWCH	
32	052-112-10	Bearing	1	6309ZZC3		
32	052-001-08	Bearing	1	6309ZZC3(SRL)		

PARTS LIST		SEWAGE & WASTEWATER PUMP			6/7/2022	
ITEM	PART No.	DESCRIPTION	QTY	SIZE	MATERIAL	NOTES
33	140-104-15	Hex.Bolt	4	M12x65	SUS304	
34	142-165-10	Spring Washer	4	M12	SUS304	
35	140-099-16	Hex.Bolt	2	M12x40	SUS304	
36	142-165-10	Spring Washer	2	M12	SUS304	
37	121-247-12	Packing	2	d12.3xd18x2t	PE	*
38	035-113-18	Oil Plug	2	M12x14	SUS304	
39	060-002-11	Bearing Housing	1		FC200	
40	122-159-19	O-Ring	1	G-280(279.3xd5.7)	NBR	*
41	025-280-16	Mechanical Seal	1	H-35A	SIC	
42	143-070-23	Pan Screw	2	M5x6	SWRM	
43	030-156-18	Oil Lifter	1	H-35(A)(T)	Resin	
44	143-070-10	Pan Screw	3	M5x6	SWRM	
45	030-150-12	Seal Stopper	1	H-35(A)(T)	SPCC	
46	029-187-14	Oil Casing	1	100-5.5/7.5-4B2	FC	
47	122-159-19	O-Ring	1	G-280(279.3xd5.7)	NBR	*
48	026-115-12	Oil Seal	1	TC-608212	NBR	
49	021-803-22	Impeller (50Hz)	1	100B45.5-56	FC	
49	021-804-10	Impeller (60Hz)	1	100B45.5-66	FC	
50	142-202-10	Impeller Fixing Washer	1	d13xd50x15t	SUS304	
51	144-530-16	Hex.Socket Set Screw	2	M6x15	SUS304	
52	142-000-22	Spring Washer	1	M12(CP)	SUS304	
53	140-304-17	Hex.Socket Cap Bolt	1	M12x45	SUS304	
54	046-107-13	Air Release Valve	1	PT-1/2	Nylon	
55	020-531-23	Pump Casing	1	100-5.5/7.5-4B2	FC	
56	120-102-11	Packing (S.Cover)		d301xd328x0.3t	PE	
57	022-521-13	Suction Cover	1	100-5.5/7.5-4B2	FC	
58	142-165-10	Spring Washer	3	M12	SUS304	
59	140-097-14	Hex.Bolt	3	M12x30	SUS304	
60	023-288-18	Pump Stand	3	55/110-CE2	FC	
61	142-165-10	Spring Washer	3	M12	SUS304	
62	140-097-14	Hex.Bolt	3	M12x30	SUS304	
63	142-165-10	Spring Washer	3	M12	SUS304	
64	140-099-16	Hex.Bolt	3	M12x40	SUS304	
65	140-000-56	Hex.Bolt	8	M16x75	SWRM	included in BEND 100x100
66	048-000-40	Screwed Flange	1	JIS10Kx100mm(PT)	FC	included in BEND 100x100
67	121-106-34	Packing	1	JIS10Kx100mm	NR	included in BEND 100x100
68	037-000-32	Discharge Bend	1	100x100mm(S-4)	FC	included in BEND 100x100

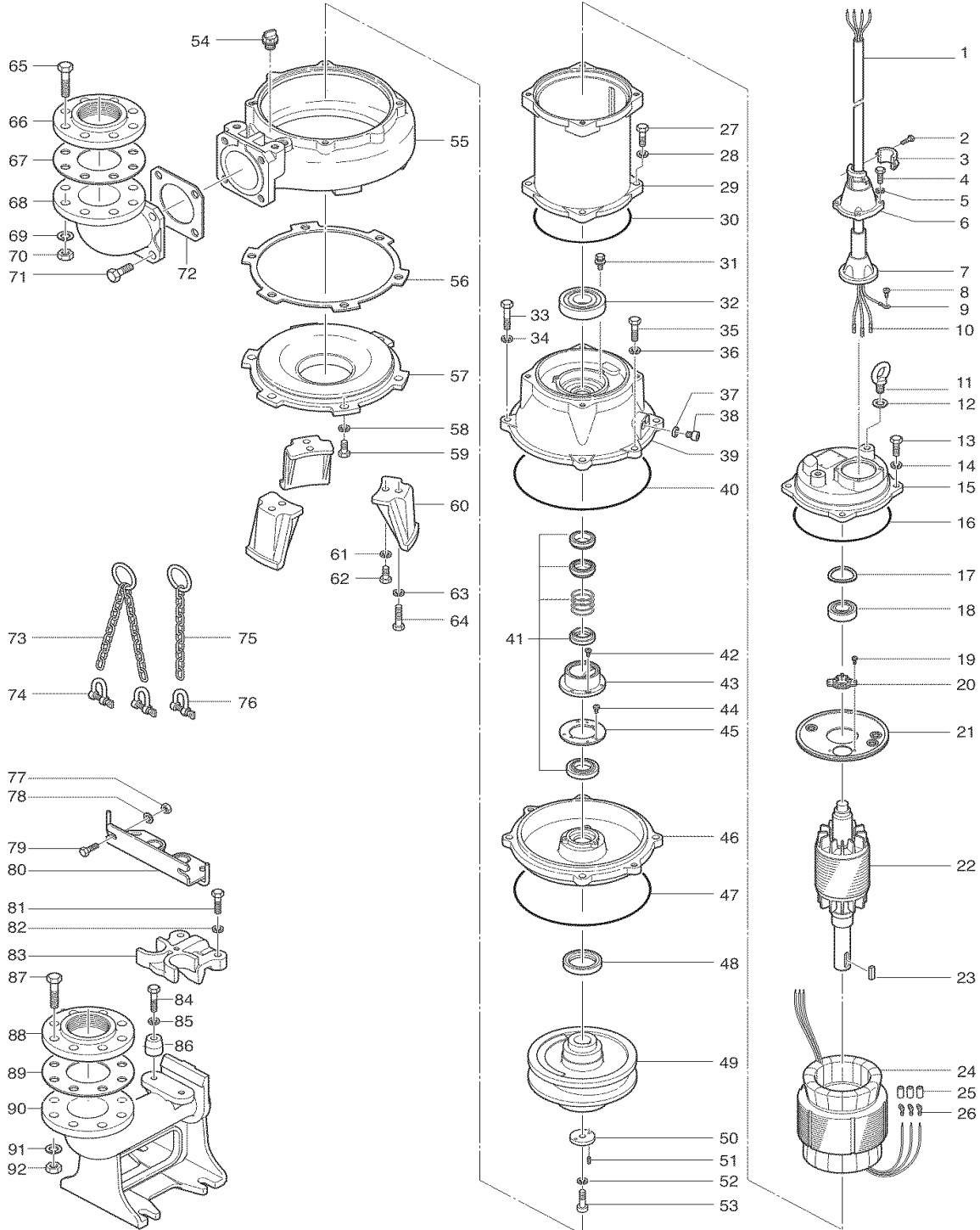
PARTS LIST		SEWAGE & WASTEWATER PUMP			6/7/2022	
ITEM	PART No.	DESCRIPTION	QTY	SIZE	MATERIAL	NOTES
69	142-166-37	Spring Washer	8	M16	SWRH	included in BEND 100x100
70	141-008-11	Hex.Nut	8	M16	SUS304	included in BEND 100x100
71	140-124-11	Hex.Bolt	4	M16x40	SUS304	included in BEND 100x100
72	121-153-10	Packing	1	160mm2(P.C.165)	NBR	included in BEND 100x100
73-92		REFERENCE PARTS LIST FOR TOS3-100X100				
	173-001-21	Packing O-Ring Set	1Set	(Marked by *)		
16	122-151-11	O-Ring (M.Bracket/M.Frame)	1	G-200(199.3xd5.7)	NBR	*
30	122-151-11	O-Ring (M.Frame/Brg.Housing)	1	G-200(199.3xd5.7)	NBR	*
37	121-247-12	Packing (Oil Plug)	2	d12.3xd18x2t	PE	*
40	122-159-19	O-Ring (Brg.Housing/O.Casing)	1	G-280(279.3xd5.7)	NBR	*
47	122-159-19	O-Ring (O.Casing/P.Casing)	1	G-280(279.3xd5.7)	NBR	*
72	121-153-10	Packing (Discharge Bend)	1	160mm2(P.C.165)	NBR	*
			Lubricant		Turbine Oil VG32 4,200ml	



PARTS LIST		SEWAGE & WASTEWATER PUMP			6/7/2022	
ITEM	PART No.	DESCRIPTION	QTY	SIZE	MATERIAL	NOTES

EXPLODED VIEW

100B45. 5-E1/W1/56/66
100B47. 5-E1/W1/56/66



C-01568-1