

PARTS LIST		SEWAGE & WASTEWATER PUMP			1/25/2022	
ITEM	PART No.	DESCRIPTION	QTY	SIZE	MATERIAL	NOTES
1	001-315-20	Cabtyre Cable Set (32') 60Hz(USA)	1	2PNCT4Cx3.5mm2	KR-2	
	001-509-36	Cabtyre Cable Set (50') 60Hz(USA)	1	2PNCTF4Cx3.5mm2	KR-2	OPTIONAL 50' cable
2	070-107-18	Cable Clamp	1		FC	included in ITEM#1 cable assembly
3	140-035-14	Hex.Bolt	2	M6x20	SUS304	included in ITEM#1 cable assembly
4	006-126-14	Stuffing Box 60Hz(USA)	1	No.2	FC	included in ITEM#1 cable assembly
5	140-055-10	Hex.Bolt	4	M8x25	SUS304	included in ITEM#1 cable assembly
6	008-142-12	Mould Cover 60Hz(USA)	1	KR2-7	CR	included in ITEM#1 cable assembly
7	009-275-18	Compression type Terminal	3	TGNB-5.5(Insulated)	CU	
8	143-013-15	Pan Screw	1	M4x6	SWRM	
9	142-160-31	Spring Washer	1	M4	SWRH	
10	009-122-19	Terminal	1	R-3.5-4	CU	
11	072-102-22	Eye Bolt	3	M12	SUS304	
12	016-116-12	Lead Wire Protection Bush	1	d20x38(d5.6x3)	NBR	
13	140-099-16	Hex.Bolt	4	M12x40	SUS304	
14	142-165-10	Spring Washer	4	M12	SUS304	
15	050-373-15	Motor Bracket	1		FC	
16	122-250-11	O-Ring	1	230xd3.8	NBR	*
17	053-192-17	Motor Protector 230V-60Hz(USA)	1	KA314-HKXL00	(B.C)	
	053-358-13	Motor Protector 460V-60Hz(USA)	1	KA313-GCZL103	(H.C.)	
		Motor Protector 575V-60Hz(USA)	1			
18	143-022-17	Pan Screw	2	M4x30	SWRM	
19	058-125-14	Lead Wire Protection Plate	1	d110xd190x1.2t	SPC+NBR	
20	142-162-33	Spring Washer	2	M6	SWRH	
21	143-043-14	Pan Screw	2	M6x12	SWRM	
22	142-200-18	Wave Washer	1	6308	SK5	
23	052-111-19	Bearing	1	6308ZZC3		
24	055-589-11	Rotor	1Set			
25	147-030-10	Impeller Key	1	10x8x40L	SUS420	
26		Stator 230V-60Hz	1Set			
		Stator 460V-60Hz				
		Stator 575V-60Hz				
27	064-126-27	Motor Frame	1		FC	
28	140-052-33	Hex.Bolt	4	M8x16	SWRM	
29	062-199-12	Bearing Fixing Washer	4	d8.5xd26x2.3t	SS	
30	061-142-17	Bearing Collar	1	d50xd70x3t	SPC	
31	052-113-11	Bearing	1	6310ZZC3		can substitute 052-001-09
32	146-029-13	Retaining Ring	1	C50	SK5	
33	122-251-12	O-Ring	1	205xd3.8	NBR	*
34	060-364-14	Bearing Housing	1		FC	
35	140-104-15	Hex.Bolt	4	M12x65	SUS304	

* Indicates items included in set

PARTS LIST		SEWAGE & WASTEWATER PUMP			1/25/2022	
ITEM	PART No.	DESCRIPTION	QTY	SIZE	MATERIAL	NOTES
36	142-165-10	Spring Washer	4	M12	SUS304	
37	140-099-16	Hex.Bolt	4	M12x40	SUS304	
38	142-165-10	Spring Washer	4	M12	SUS304	
39	035-113-18	Oil Plug	2	M12x14	SUS304	
40	121-247-12	Packing	2	d12.3xd18x2t	PE	*
41	121-341-17	Seal Packing	4	d12xd21x4t	NBR	*
42	142-116-29	Plain Washer	4	M12(D=21)	SPC	
43	140-101-38	Hex.Bolt	4	M12x50	SWRM	
44	025-000-61	Mechanical Seal	1	H-40X(E)	SiC	
45	143-070-23	Pan Screw	2	M5x6	SWRM	
46	030-141-10	Oil Lifter	1	H-40(T)	Resin	
47	143-070-10	Pan Screw	3	M5x6	SWRM	
48	030-149-18	Seal Stopper	1	H-40/45	SPCC	
49	122-160-13	O-Ring	1	G-290(289.3xd5.7)	NBR	*
50	029-272-17	Oil Casing	1	150-3.7-6B2	FC	
51	122-160-13	O-Ring	1	G-290(289.3xd5.7)	NBR	*
52	046-107-13	Air Release Valve	1	PT-1/2	Nylon	
53	020-688-13	Pump Casing	1	150-3.7-6B	FC	
54	021-687-15	Impeller (60Hz)	1	150B63.7-61	FC	
55	142-101-18	Impeller Fixing Washer	1	d17xd50x6t	SUS304	
56	142-166-11	Spring Washer	1	M16	SUS304	
57	140-123-10	Hex.Bolt	1	M16x35	SUS304	
58	122-260-14	O-Ring	1	295xd5.7	NBR	*
59	022-471-17	Suction Cover	1	150-3.7-6B	FC	
60	142-165-10	Spring Washer	6	M12	SUS304	
61	140-099-16	Hex.Bolt	6	M12x40	SUS304	
62	023-155-28	Pump Stand	1	No.4	FCMB	
63	142-165-10	Spring Washer	3	M12	SUS304	
64	140-099-16	Hex.Bolt	3	M12x40	SUS304	
65	037-119-10	Discharge Bend	1	150x150mm	FC	
66	140-126-13	Hex.Bolt	8	M16x50	SUS304	
67	142-166-11	Spring Washer	8	M16	SUS304	
68	121-165-28	Packing	1	JIS5Kx150mm	NR	
	173-450-11	Packing O-Ring Set	1Set	(Marked by *)		
16	122-250-11	O-Ring (M.Bracket/M.Frame)	1	230xd3.8	NBR	*
33	122-251-12	O-Ring (M.Frame/Brg.Housing)	1	205xd3.8	NBR	*
40	121-247-12	Packing (Oil Plug)	2	d12.3xd18x2t	PE	*
41	121-341-17	Seal packing (Brg.Housing Bolt)	4	d12xd21x4t	NBR	*
49	122-160-13	O-Ring (Brg.Housing/O.Casing)	1	G-290(289.3xd5.7)	NBR	*
51	122-160-13	O-Ring (O.Casing/P.Casing)	1	G-290(289.3xd5.7)	NBR	*

* Indicates items included in set



MODEL 150B63.7-61

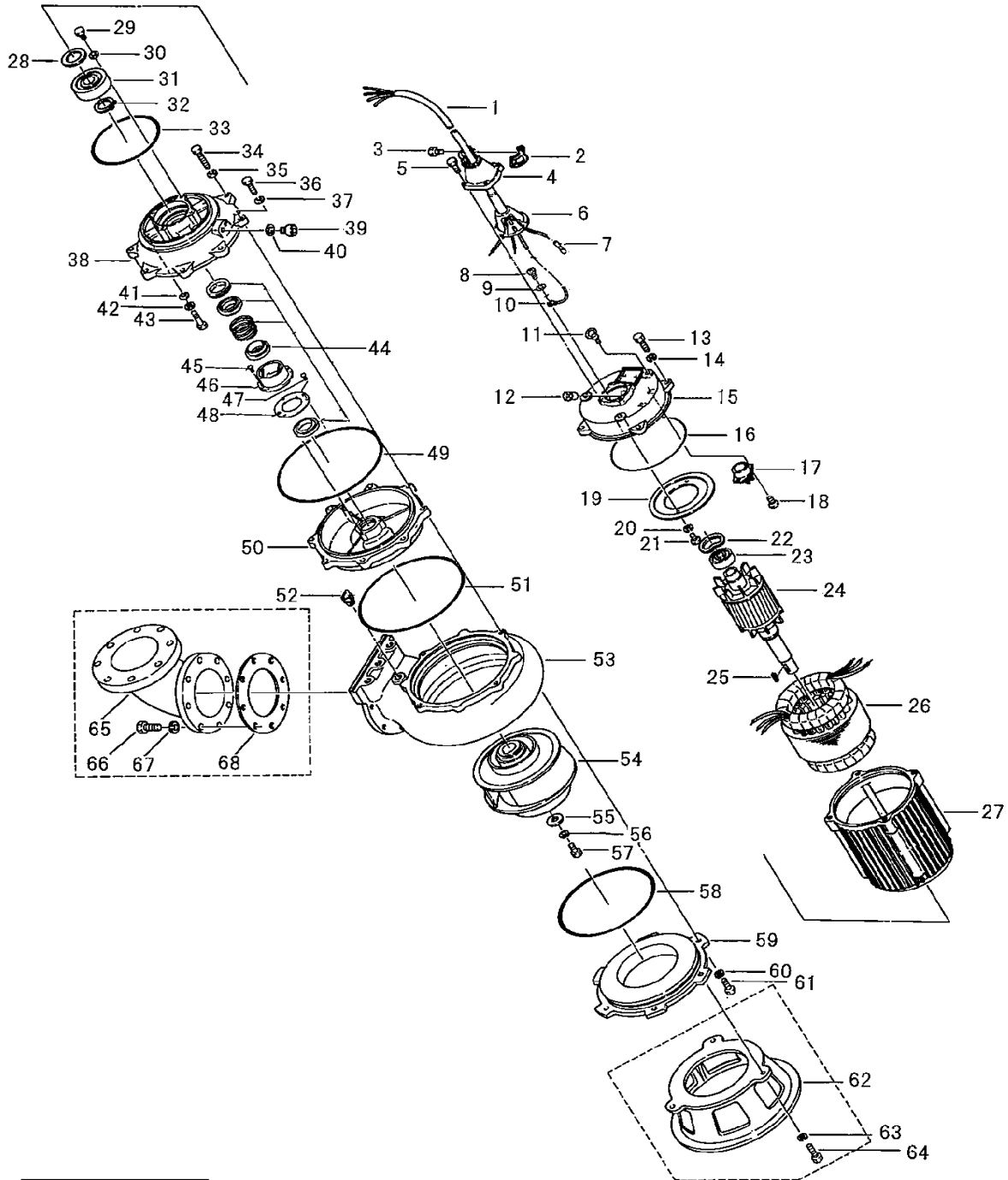
PARTS LIST		SEWAGE & WASTEWATER PUMP				1/25/2022
ITEM	PART No.	DESCRIPTION	QTY	SIZE	MATERIAL	NOTES
58	122-260-14	O-Ring (P.Casing/S.Cover)	1	295xd5.7	NBR	*
		Lubricant		Turbine Oil VG32 3,900ml		
	183-004-17	Impeller Puller	1	B No.4	FCD	

* Indicates items included in set

PARTS LIST		SEWAGE & WASTEWATER PUMP			1/25/2022	
ITEM	PART No.	DESCRIPTION	QTY	SIZE	MATERIAL	NOTES

EXPLODED VIEW

150B63. 7-51/61 (150-3. 7-6B2)



C-01458-1