

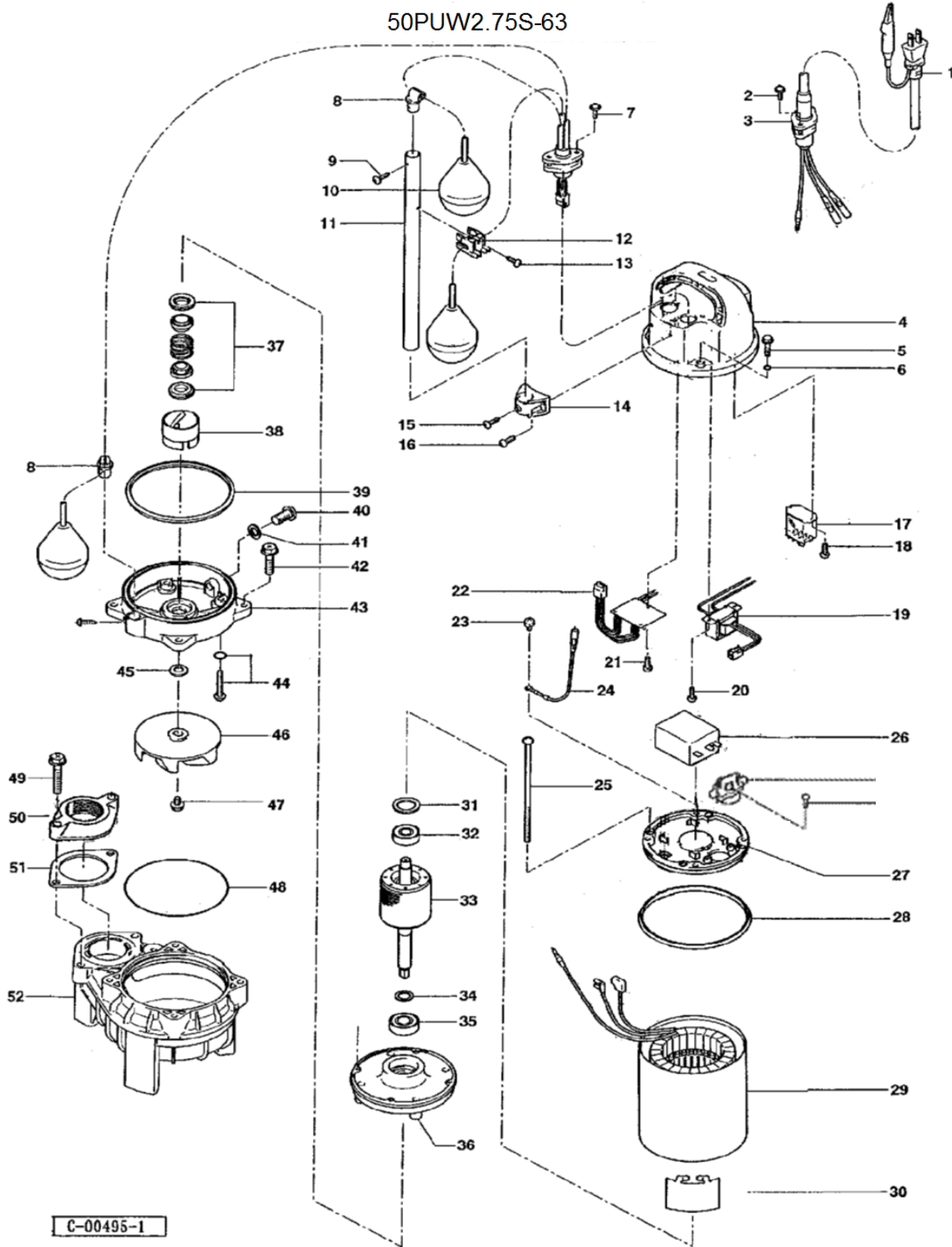
PARTS LIST		VANCS WASTEWATER PUMP			7/25/2019	
ITEM	PART No.	DESCRIPTION	QTY	SIZE	MATERIAL	NOTES
1	001-471-12	Cabtyre Cable Set (32') 115V-60Hz (USA)	1	VCT3Cx2mm2	LB	
1	001-000-73	Cabtyre Cable Set (32') 230V-60Hz (USA)	1	STOW3x1.25mm2	LB	
2	143-000-33	Hex. Tapping Screw	2	M5x20	SUS304	
3	003-190-10	Gland	1		SUS316	
4	051-000-47	Head Cover	1		Resin	
5	140-000-07	Hex.Bolt (w/Plain Washer)	4	M6x30(22L)	SUS304	
6	122-004-18	O-Ring	4	P-6(5.8xd1.9)	NBR	*
7	143-000-33	Hex. Tapping Screw	2	M5x20	SUS304	
8	109-129-19	Float Support Bush	2	d14	Rubber	
9	143-143-15	Truss Tapping Screw	2	M4x16(D=8)	SUS304	
10	106-483-15	Float Set	1Set	AO2-3(400L/300L/400L)		
11	109-000-02	Float Support Pipe	1	VP-14x300L(w/Hole, Black)	VP	
12	109-130-13	Float Support Bush	1	d14	Rubber	
13	143-143-15	Truss Tapping Screw	1	M4x16(D=8)	SUS304	
14	109-000-20	Holder	1		Resin	
15	143-143-15	Truss Tapping Screw	1	M4x16(D=8)	SUS304	
16	143-174-15	Tapping Screw	2	M4x14	SUS304	
17	114-000-09	Power Relay	1	LY-2F(DC24V)		
18	143-152-17	Truss Tapping Screw	2	M3x8	SWCH	
19	115-000-19	Transformer 115V-60Hz(USA)	1	WI120/20-1	(T)	
19	115-000-21	Transformer 230V-60Hz(USA)	1	WI230/20-1	(T)	
20	143-152-17	Truss Tapping Screw	2	M3x8	SWCH	
21	143-152-17	Truss Tapping Screw	3	M3x8	SWCH	
22	114-000-06	Relay Unit	1	Control Panel for Auto-Alternate Operati		
23	143-085-34	Pan Screw (w/Spring Washer)	1	M4x6	C3604	
24	009-001-24	Earth Terminal	1Set	1.25mm2x195L		
25	143-000-04	Pan Screw	4	M5x118(20L)	SWRM	
26	076-000-63	Capacitor 115V-60Hz(USA)	1	45MF-220VAC		replaces OLD part# 076-000-01
26	076-000-08	Capacitor 230V-60Hz(USA)	1	12MF-440VAC		
	053-000-08	Motor Protector 115V-60Hz(USA)	1	KA142-BDXL14F	(T+H)	
	053-000-61	Motor Protector 230V-60Hz(USA)	1	KA142-BPXL34D	(T+H)	
	143-136-15	Truss Screw	2	M4x10	SWRM	
27	050-000-02	Motor Bracket	1		ADC	
28	121-471-17	Packing	1	d126.6xd135.6x6t	NBR	*

PARTS LIST		VANCS WASTEWATER PUMP				7/25/2019
ITEM	PART No.	DESCRIPTION	QTY	SIZE	MATERIAL	NOTES
29	056-008-17	Stator (w/M.Frame)115V-60Hz(USA)	1Set			
29	056-008-19	Stator (w/M.Frame)230V-60Hz(USA)	1Set			
30	071-000-01	Collar	1	37L	SECC	
31	142-000-91	Wave Washer	1	6201(D=30.6,t=0.35)	SK5	
32	052-100-15	Bearing	1	6201ZZC3		
33	055-002-91	Rotor	1Set	w/Bearing		
34	061-157-15	Bearing Collar	1	d15.1xd21x1.6t	SPCC	
35	052-101-16	Bearing	1	6202ZZC3		
36	060-001-36	Bearing Housing	1		ADC	
37	025-000-78	Mechanical Seal	1	W-14HL (ROHS)	SiC+CCBN	replaces OLD part# 025-290-19
38	030-000-01	Oil Lifter	1	VANCS2	Resin	
39	121-001-12	Packing	1	VANCS2	NBR	*
40	035-127-15	Oil Plug	1	M10x15	SUS304	
41	121-246-11	Packing	1	d10.3xd16x2t	PE	*
42	140-000-03	Hex.Bolt (w/Spring Washer)	4	M6x25	SUS304	
43	029-000-01	Oil Casing	1	VANCS2	Resin	
44	143-000-26	Truss Screw (w/O-Ring)	4	M6x20(P-5,NBR)	SUS304	*
45	142-354-18	Conical Spring Washer	1	d11.2xd22.5x0.8t	SUS304	
46	021G2821	Impeller (60Hz)	1	50PUW2.75S-62	Resin	
47	143-140-12	Truss Screw (w/Plain Washer)	1	M6x12	SUS304	
48	122-000-07	O-Ring	1	122xd3.0	NBR	*
49	140-000-09	Hex.Bolt (w/Spring Washer)	2	M8x45	SUS304	
50	048-274-18	Screwed Flange	1	NPT-2" (P.C.90)	Resin	
51	121-469-12	Packing	1	P.C.90xd58x2t	NR	*
52	020-000-05	Pump Casing	1	(40/50)PU2.25/.4/.75	Resin	
	173-000-07	Packing O-Ring Set	1Set	(Marked by *)		
6	122-004-18	O-Ring (Head Cover Fixing Bolt)	4	P-6(5.8xd1.9)	NBR	*
28	121-471-17	Packing (Head Cover/M.Frame)	1	d126.6xd135.6x6t	NBR	*
39	121-001-12	Packing (M.Frame/O.Casing)	1	VANCS2	NBR	*
41	121-246-11	Packing (Oil Plug)	1	d10.3xd16x2t	PE	*
44	122-003-17	O-Ring (P.Casing Bolt)	4	P-5(4.8xd1.9)	NBR	*
48	122-000-07	O-Ring (O.Casing/P.Casing)	1	122xd3.0	NBR	*
51	121-469-12	Packing (Screwed Flange)	1	P.C.90xd58x2t	NR	*
		Lubricant		Turbine Oil VG32 240ml		

PARTS LIST		VANCS WASTEWATER PUMP			7/25/2019	
ITEM	PART No.	DESCRIPTION	QTY	SIZE	MATERIAL	NOTES

EXPLODED VIEW

50PUW2.75S-63



* Indicates items included in set