

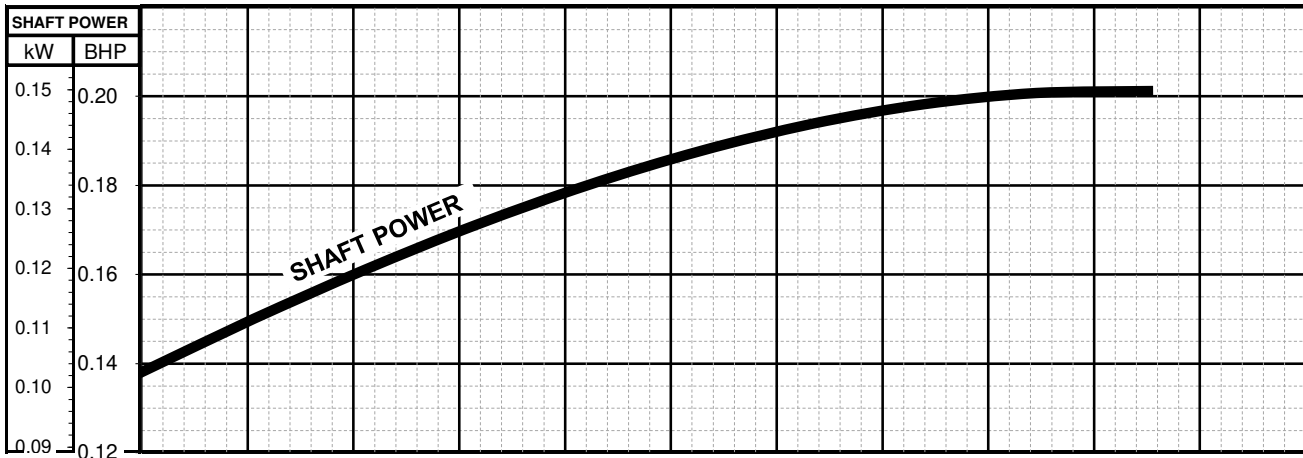
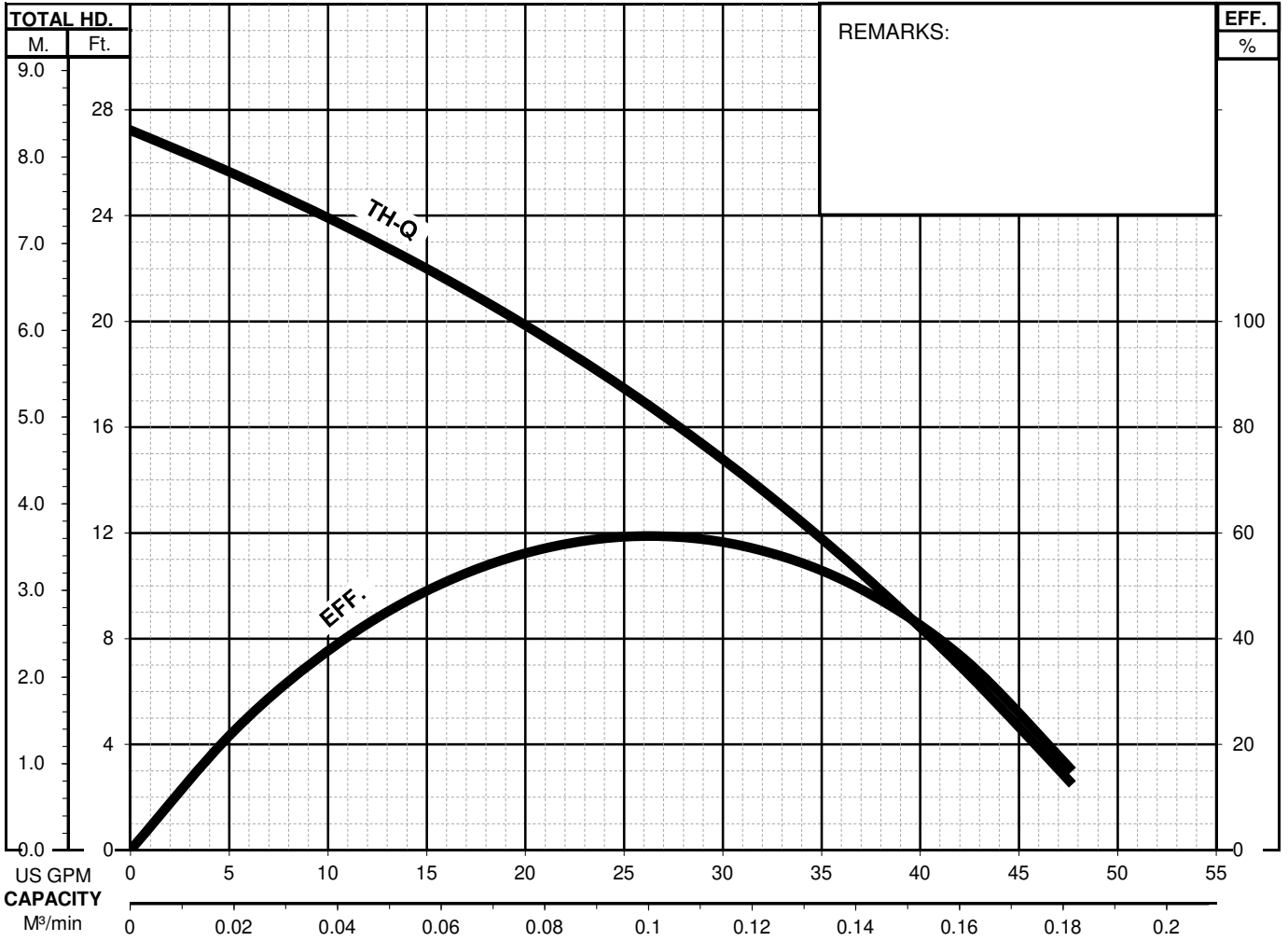


OM - SERIES

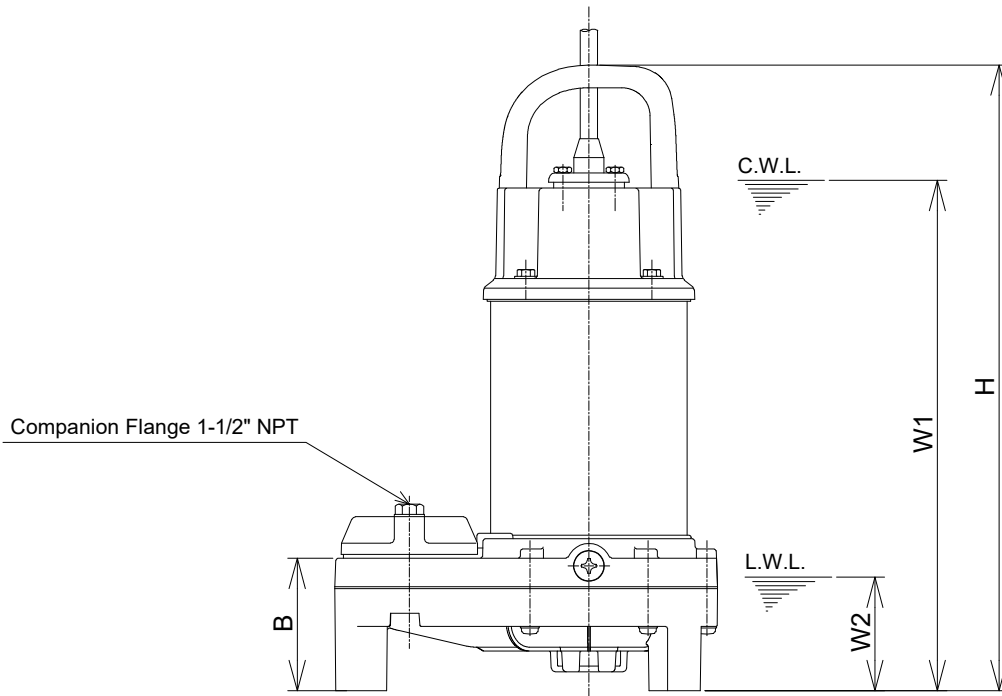
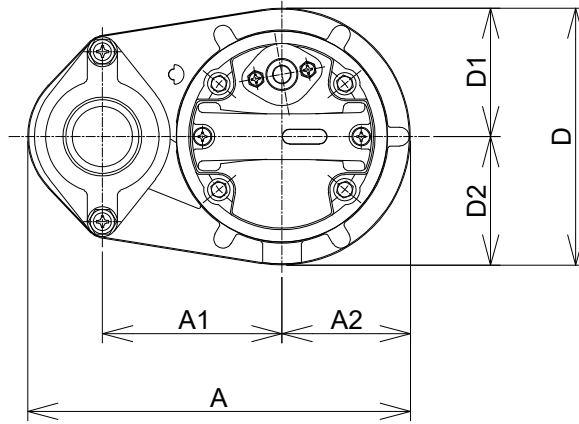
(FRP) SEMI-VORTEX - SUMP PUMPS

PERFORMANCE CURVE

| | | | | | | | | | |
|-------------------------|--------------|----------------|-----------------|-----------------|--------------------|------------------------|-------------------|-------------------|--------------|
| MODEL | BORE | HP | kW | RPM | SOLIDS DIA. | LIQUID | SG. | VISCOSITY | TEMP. |
| OM5 | 1 1/2"/40mm | 0.20 | 0.15 | 3457 | 0.394"/10mm | Water | 1.0 | 1.123cSt. | 60°F |
| PUMP TYPE | PHASE | VOLTAGE | AMPERAGE | | HZ | STARTING METHOD | | INS. CLASS | |
| Semi-Vortex - Sump Pump | Single | 115 | 3.2 | | 60 | Capacitor-Start | | F | |
| CURVE No. | DATE | PHASE | VOLTAGE | AMPERAGE | HZ | STARTING METHOD | INS. CLASS | | |
| - | - | - | - | - | - | - | - | | |



OM5



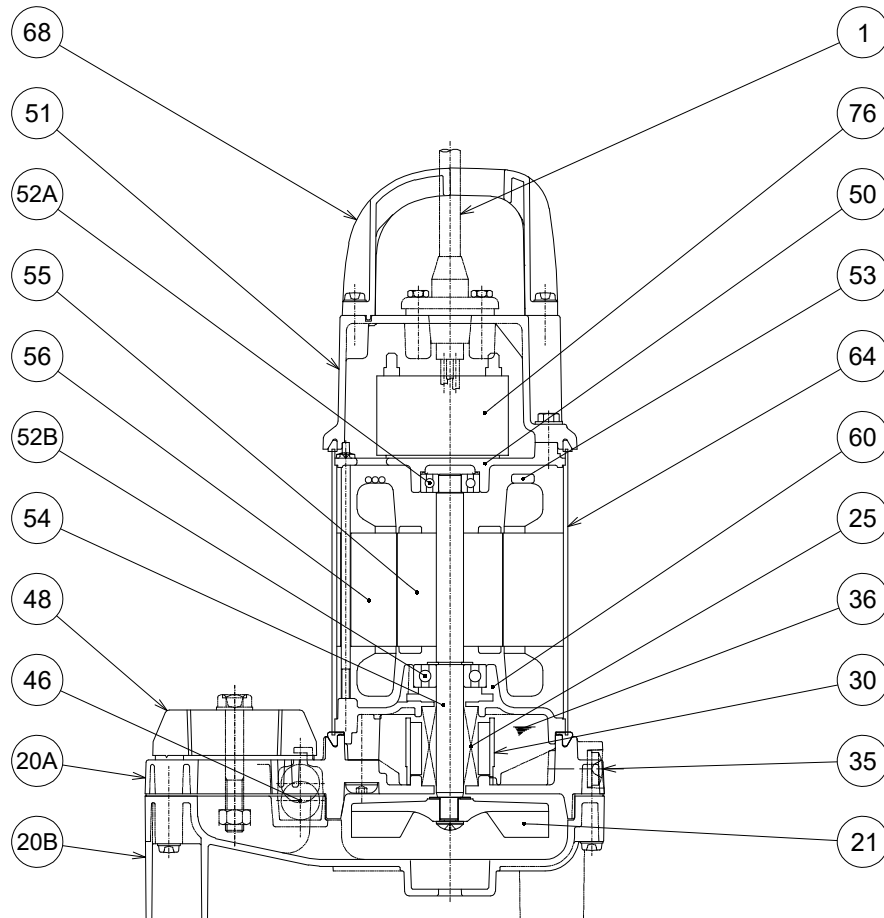
DIMENSIONS:USCS (Inch)

| Model | HP | NOM. SIZE | Pump & Motor | | | | | | | | C.W.L. | L.W.L. | *Wt. |
|-------|-----|-----------|--------------|-------|---------|-------|-------|---------|---------|---------|--------|--------|--------|
| | | | A | A1 | A2 | B | D | D1 | D2 | H | W1 | W2 | (lbs.) |
| OM5 | 1/5 | 1 1/2" | 8 | 3 3/4 | 2 11/16 | 2 3/4 | 5 3/8 | 2 11/16 | 2 11/16 | 13 1/16 | 10 5/8 | 2 3/8 | 11.2 |

DIMENSIONS:METRIC (mm)

| Model | kW | NOM. SIZE | Pump & Motor | | | | | | | | C.W.L. | L.W.L. | *Wt. |
|-------|------|-----------|--------------|----|----|----|-----|----|----|-----|--------|--------|------|
| | | | A | A1 | A2 | B | D | D1 | D2 | H | W1 | W2 | (kg) |
| OM5 | 0.15 | 40 | 203 | 95 | 68 | 70 | 136 | 68 | 68 | 331 | 270 | 60 | 5.1 |

*Excluding Cable

OM5


| PART# | DESCRIPTION | MAIN MATERIAL / NOTE | RELATED ASTM, AISI CODE | RELATED EN CODE | QTY |
|-------|-------------------|------------------------------------|-------------------------|------------------|-----|
| 1 | Power Cable | PVC Sheath AWG18/3-20ft | | | 1 |
| 20A | Upper Pump Casing | PPO Plastic w/GF20 | | | 1 |
| 20B | Lower Pump Casing | ABS Plastic | | | 1 |
| 21 | Impeller | PPO Plastic w/GF20 | | | 1 |
| 25 | Mechanical Seal | Silicon Carbide + Ceramic / D-12RC | | | 1 |
| 30 | Oil Lifter | PBT Plastic w/GF30 | | | 1 |
| 35 | Oil Plug | Stainless Steel | S 30400 | 1.4301 | 1 |
| 36 | Lubricant | White Mineral Oil ISO VG32 | | | |
| 46 | Air Valve | Glass Ball | | | 1 |
| 48 | Companion Flange | PBT Plastic w/GF30 / NPT 1-1/2" | | | 1 |
| 50 | Motor Bracket | Aluminum Alloy Die Casting | B85 383.0 | EN 1706 AC-46100 | 1 |
| 51 | Motor Head Cover | PPO Plastic w/GF20 | | | 1 |
| 52A | Upper Bearing | #6000ZC3 | | | 1 |
| 52B | Lower Bearing | #6201ZC3 | | | 1 |
| 53 | Motor Protector | | | | 1 |
| 54 | Shaft | Stainless Steel | S 31600 | 1.4401 | 1 |
| 55 | Rotor | | | | 1 |
| 56 | Stator | | | | 1 |
| 60 | Bearing Housing | Aluminum Alloy Die Casting | B85 383.0 | EN 1706 AC-46100 | 1 |
| 64 | Motor Housing | Stainless Steel | S 30400 | 1.4301 | 1 |
| 68 | Handle | ABS Plastic | | | 1 |
| 76 | Capacitor | | | | 1 |