

PARTS LIST		AGITATOR PUMP			9/18/2023	
ITEM	PART No.	DESCRIPTION	QTY	SIZE	MATERIAL	NOTES
1	141-006-19	Hex.Nut	6	M10	SUS304	
2	010-103-21	Cable Clip	4	No.4	SPC	
3	010-129-10	Cable Clip Rubber	2	115x100x2t	NBR	
4	140-074-15	Hex.Bolt	6	M10x20	SUS304	
5	011-000-44	Shackle	2	#5(for Clip)	SS	
6	095-000-97	Chain	2	4mm(8L)	SS	
7	072-100-20	Eye Bolt	2	M10	SUS304	
8	009-107-18	Terminal	1	R-14-6	CU	included in ITEM#20 Cable Assembly
9	009-113-17	Terminal	6	R-38-10	CU	included in ITEM#19 Cable Assembly included in ITEM#20 Cable Assembly
10	009-116-10	Terminal	3	R-2-4	CU	included in ITEM#20 Cable Assembly
11	140-056-53	Hex.Bolt	8	M8x30	SUS304	
12	141-005-18	Hex.Nut	8	M8	SUS304	
13	003-106-19	Gland	2	No.5	FC	included in ITEM#19 Cable Assembly included in ITEM#20 Cable Assembly
14	004-000-08	Cable Bush	2	d34.5xd58x27L	NBR	included in ITEM#19 Cable Assembly included in ITEM#20 Cable Assembly
15	006-103-28	Stuffing Box 60 Hz(USA)	2	No.5	FC	included in ITEM#19 Cable Assembly included in ITEM#20 Cable Assembly
16	122-264-18	O-Ring	2	140xd3.5	NBR	*
17	140-076-17	Hex.Bolt	8	M10x30	SUS304	
18	142-164-19	Spring Washer	8	M10	SUS304	
19	001-009-52	Cabtyre Cable Set (50') 60 Hz(USA)	1	3PNCT3Cx30mm2	No.5	
20	001-009-53	Cabtyre Cable Set (50') 60 Hz(USA)	1	2PNCTFMulti-core7Cx30mm2	No.5	
21	008-105-13	Mould Cover 60 Hz(USA)	2	No.3	NBR	included in ITEM#19 Cable Assembly included in ITEM#20 Cable Assembly
22	003-149-14	Gland (Lower) 60 Hz(USA)	2	No.5	FC	included in ITEM#19 Cable Assembly included in ITEM#20 Cable Assembly
23	140-033-12	Hex.Bolt	8	M6x16	SUS304	
24	009-107-18	Terminal	1	R-14-6	CU	included in ITEM#20 Cable Assembly
25			1			
26	143-000-76	Pan Screw (w/Spring Washer/Plain Wash	1	M6x10	SWRM	
27	009-107-18	Terminal	2	R-14-6	CU	
28	009-115-19	Connector	1	PC-4020F		included in ITEM#20 Cable Assembly
29	009-114-18	Connector	1	PC-4020M		
30	141-004-59	Hex.Nut	7	M6	SWRM	
31	009-167-16	Terminal	6	R-38-S6	CU	included in ITEM#19 Cable Assembly included in ITEM#20 Cable Assembly
32	009-107-18	Terminal	6	R-14-6	CU	
33	140-030-35	Hex.Bolt	7	M6x12	SWRM	
34	200-000-23	Electrical tape(30M)	1	540S(0.18T-25Wx30M)		
35	002-000-18	Heat Shrink Tube (Sold per meter)	m	W3F2(3/4IN)	(Vm)	
36	009-114-18	Connector	2	PC-4020M		included in ITEM#20 Cable Assembly
37	009-115-19	Connector	2	PC-4020F		
38	140-052-17	Hex.Bolt	2	M8x16	SUS304	

PARTS LIST		AGITATOR PUMP			9/18/2023	
ITEM	PART No.	DESCRIPTION	QTY	SIZE	MATERIAL	NOTES
39	142-163-18	Spring Washer	2	M8	SUS304	
40	046-000-05	Air Release Valve	1	GSZ/NKZ/B	SPCC	
41	121-151-18	Packing	1	P.C.80xd50	CR	*
42	203-058-11	Ball	1	d28	SS	
43	140-129-16	Hex.Bolt	8	M16x65	SUS304	
44	142-166-11	Spring Washer	8	M16	SUS304	
45	142-000-48	Washer	8	M16(d16.5xd31.5x5t)	SUS304	
46	121-514-13	Seal Packing	8	d15.5xd27x4t	CR	*
47	035-113-18	Oil Plug	1	M12x14	SUS304	
48	121-247-12	Packing	1	d12.3xd18x2t	Polyethylene	*
49	050-001-18	Motor Bracket	1		FC250	
50	122-307-14	O-Ring	1	510xd5.7	NBR	*
51	142-455-10	Wave Washer	1	6312(d127x5t)	SK5	
52	052-114-12	Bearing	1	6312ZZC3		
53	058-000-44	Lead Wire Protection Plate	1		SPHC	
54	055-003-06	Rotor	1Set			
55	147-000-58	Impeller Key	1	18x11x76L	SUS420J2	
56	122-114-12	O-Ring	1	P-385(384.5xd8.5)	NBR	*
57	053-310-13	Motor Protector	3	9700K-76-215	(H)	
58	056-008-77	Stator(w/M.Frame) 460V-60 Hz(USA)	1Set			
58	056-008-78	Stator(w/M.Frame) 575V-60 Hz(USA)	1Set			
59	140-131-11	Hex.Bolt	6	M16x75	SUS304	
60	142-166-11	Spring Washer	6	M16	SUS304	
61	140-096-13	Hex.Bolt	3	M12x25	SUS304	
62	142-298-13	Seal Washer	3	SM-12	SUS+NBR	*
63	122-114-12	O-Ring	1	P-385(384.5xd8.5)	NBR	*
64	065-000-67	Outer Cover	1	d532x732L	SS400	
65	140-076-17	Hex.Bolt	4	M10x30	SUS304	
66	142-164-19	Spring Washer	4	M10	SUS304	
67	062-000-27	Bearing Cover	1		FC250	
68	121-001-66	Packing	1	4x8x331L	Felt	*
69	052-000-76	Bearing	1	7317BDB		
70	142-250-13	Bearing Washer	1	AW17	SPCC	
71	141-082-19	Bearing Nut	1	AN17	SS	
72	122-307-14	O-Ring	1	510xd5.7	NBR	*
73	140-130-10	Hex.Bolt	6	M16x70	SUS304	
74	142-166-11	Spring Washer	6	M16	SUS304	
75	060-001-87	Bearing Housing	1		FC250	

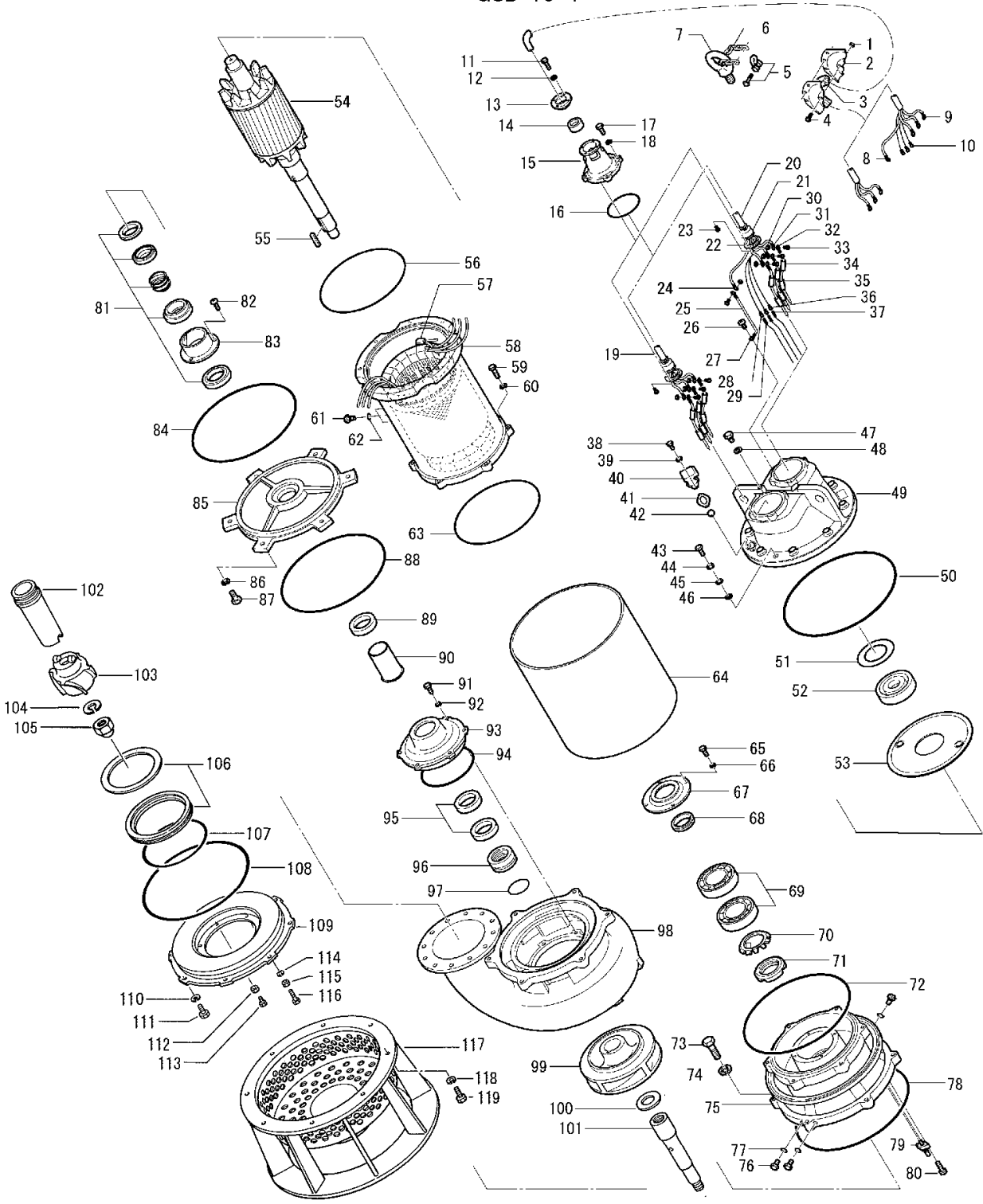
PARTS LIST		AGITATOR PUMP			9/18/2023	
ITEM	PART No.	DESCRIPTION	QTY	SIZE	MATERIAL	NOTES
76	035-113-18	Oil Plug	3	M12x14	SUS304	
77	121-247-12	Packing	3	d12.3xd18x2t	Polyethylene	*
78	122-307-14	O-Ring	1	510xd5.7	NBR	*
79	090-122-11	Leakage Sensor(Electrode)w/Gland	1Set	d9x43L	SUS	
80	140-021-17	Hex.Bolt	2	M5x20	SUS304	
81	025-001-19	Mechanical Seal	1	H-70(ROHS)(E)	SIC	
82	143-028-13	Pan Screw	3	M5x10	SWRM	
83	030-135-11	Oil Lifter	1	H-70	SPCC	
84	122-316-16	O-Ring	1	365xd5.7	NBR	*
85	029-147-12	Oil Casing	1	GSZ-75-4	FC	
86	142-165-10	Spring Washer	6	M12	SUS304	
87	140-098-15	Hex.Bolt	6	M12x35	SUS304	
88	122-316-16	O-Ring	1	365xd5.7	NBR	*
89	026-119-16	Oil Seal	1	TC-8011515	NBR	
90	071-000-58	Shaft Sleeve	1	d70xd90x136L	SUS403	
90	071-000-58-2205	Shaft Sleeve OPTIONAL	1	d70xd90x136L	Duplex 2205	For abrasive applicatons
91	140-097-14	Hex.Bolt	6	M12x30	SUS304	
92	142-165-10	Spring Washer	6	M12	SUS304	
93	028-121-17	Seal Housing	1	GSZ-75-4	FC	
94	122-252-13	O-Ring	1	270xd3.8	NBR	*
95	026-119-16	Oil Seal	2	TC-8011515	NBR	
96	026-151-23	Labyrinth Ring	1	GSZ-55/75-4	SUS403	
96	026-151-23-2205	Labyrinth Ring OPTIONAL	1	GSZ-55/75-4	Duplex 2205	For abrasive applicatons
97	122-133-17	O-Ring	1	G-110(109.4xd3.1)	NBR	*
98	020-345-15	Pump Casing	1	GSZ-75-4	FC	
99	021-010-10	Impeller (60Hz)	1	GSD-55-4	HiCrFc	
100	142-352-16	Impeller Washer	1	d46xd74x6t(M45)	SPC	
101	024-156-19	Connecting Rod	1	M45-M30	SS	
102	024-157-10	Connecting Rod Cover	1	DL-50/75/100	FCD	
103	024-158-11	Agitator	1	DL-50/75/100	HiCrFC	
104	142-171-19	Spring Washer	1	M30	SUS304	
105	141-036-18	Hex.Cap Nut	1	M30	SUS304	
106	033-138-13	Suction Mouth Ring	1	DL-75/100	FC+HiCrFC	
107	122-254-15	O-Ring	1	265xd3.8	NBR	*
108	122-394-18	O-Ring	1	455xd5	NBR	*
109	022-689-10	Suction Cover	1	DL-75/100	FC	
110	142-166-11	Spring Washer	8	M16	SUS304	
111	140-124-11	Hex.Bolt	8	M16x40	SUS304	

PARTS LIST		AGITATOR PUMP			9/18/2023	
ITEM	PART No.	DESCRIPTION	QTY	SIZE	MATERIAL	NOTES
112	141-005-18	Hex.Nut	3	M8	SUS304	
113	140-269-19	Hex.Socket Cap Bolt	3	M8x25	SUS304	
114	142-163-18	Spring Washer	3	M8	SUS304	
115	141-005-18	Hex.Nut	3	M8	SUS304	
116	140-272-31	Hex.Socket Cap Bolt	3	M8x40	SUS304	
117	023-443-13	Strainer Stand	1	DL-75/100	SS	
118	142-166-11	Spring Washer	8	M16	SUS304	
119	140-124-11	Hex.Bolt	8	M16x40	SUS304	
	048-000-53	Screwed Flange	1	NPT-10(JIS10K)	FC	
	140-153-19	Hex.Bolt	12	M20x75	SUS304	
	142-131-17	Plain Washer	12	M20	SUS304	
	142-168-13	Spring Washer	12	M20	SUS304	
	121-110-28	Packing	1	JIS10Kx250mm	NR	
	173-004-12	Packing O-Ring Set	1Set	(Marked by *)		
16	122-264-18	O-Ring (S.Box)	2	140xd3.5	NBR	*
41	121-151-18	Packing (Air Release Valve)	1	P.C.80xd50	CR	*
46	121-514-13	Seal Packing (M.Bracket Bolt)	8	d15.5xd27x4t	CR	*
48	121-247-12	Packing (Air Tightness Test Plug)	1	d12.3xd18x2t	Polyethylene	*
50	122-307-14	O-Ring (M.Bracket/Out.Cover)	1	510xd5.7	NBR	*
56	122-114-12	O-Ring (M.Bracket/M.Frame)	1	P-385(384.5xd8.5)	NBR	*
62	142-298-13	Seal Washer (Stator Set Bolt)	3	SM-12	SUS+NBR	*
63	122-114-12	O-Ring (M.Frame/Brg.Housing)	1	P-385(384.5xd8.5)	NBR	*
68	121-001-66	Packing (Brg.Cover)	1	4x8x331L	Felt	*
72	122-307-14	O-Ring (Out.Cover/Brg.Housing)	1	510xd5.7	NBR	*
77	121-247-12	Packing (Oil Plug)	3	d12.3xd18x2t	Polyethylene	*
78	122-307-14	O-Ring (Brg.Housing/P.Casing)	1	510xd5.7	NBR	*
84	122-316-16	O-Ring (Brg.Housing/O.Casing)	1	365xd5.7	NBR	*
88	122-316-16	O-Ring (O.Casing/P.Casing)	1	365xd5.7	NBR	*
94	122-252-13	O-Ring (Seal Housing/P.Casing)	1	270xd3.8	NBR	*
97	122-133-17	O-Ring (Labyrinth Ring)	1	G-110(109.4xd3.1)	NBR	*
107	122-254-15	O-Ring (Seal Housing/P.Casing)	1	265xd3.8	NBR	*
108	122-394-18	O-Ring (P.Casing/S.Cover)	1	455xd5	NBR	*
		Lubricant		Turbine Oil VG32 9,400ml		

PARTS LIST		AGITATOR PUMP			9/18/2023	
ITEM	PART No.	DESCRIPTION	QTY	SIZE	MATERIAL	NOTES

EXPLODED VIEW

GSD-55-4
GSD-75-4



* Indicates items included in set