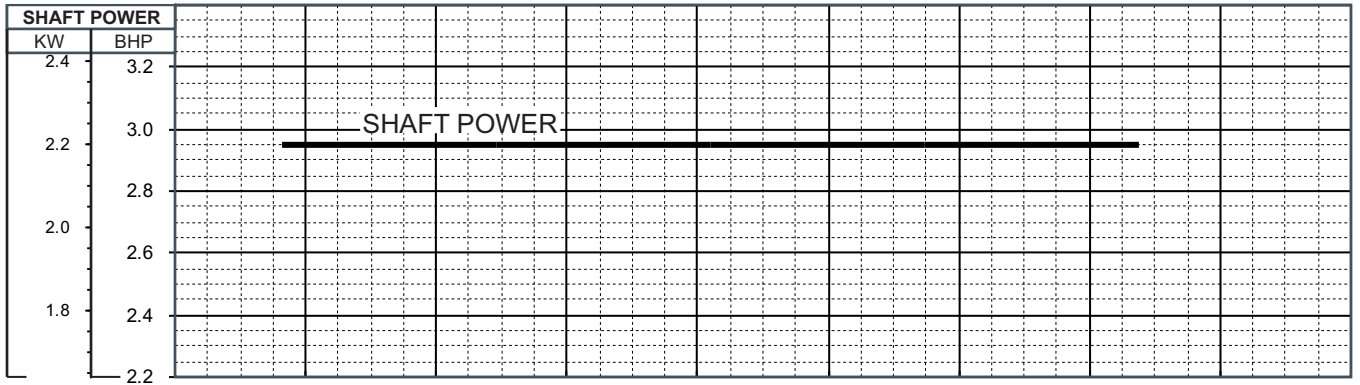
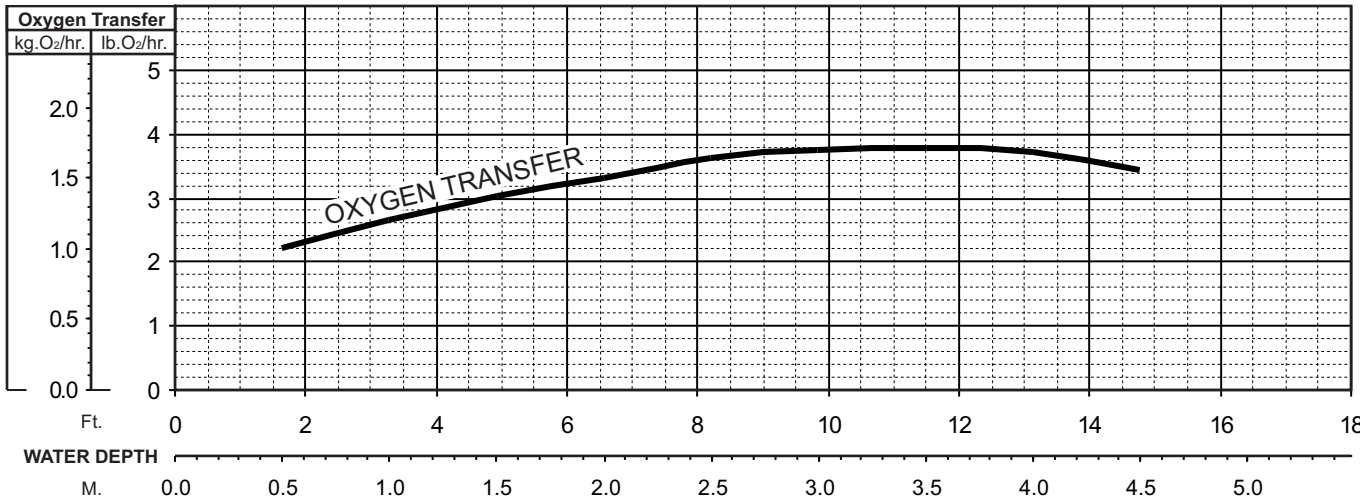
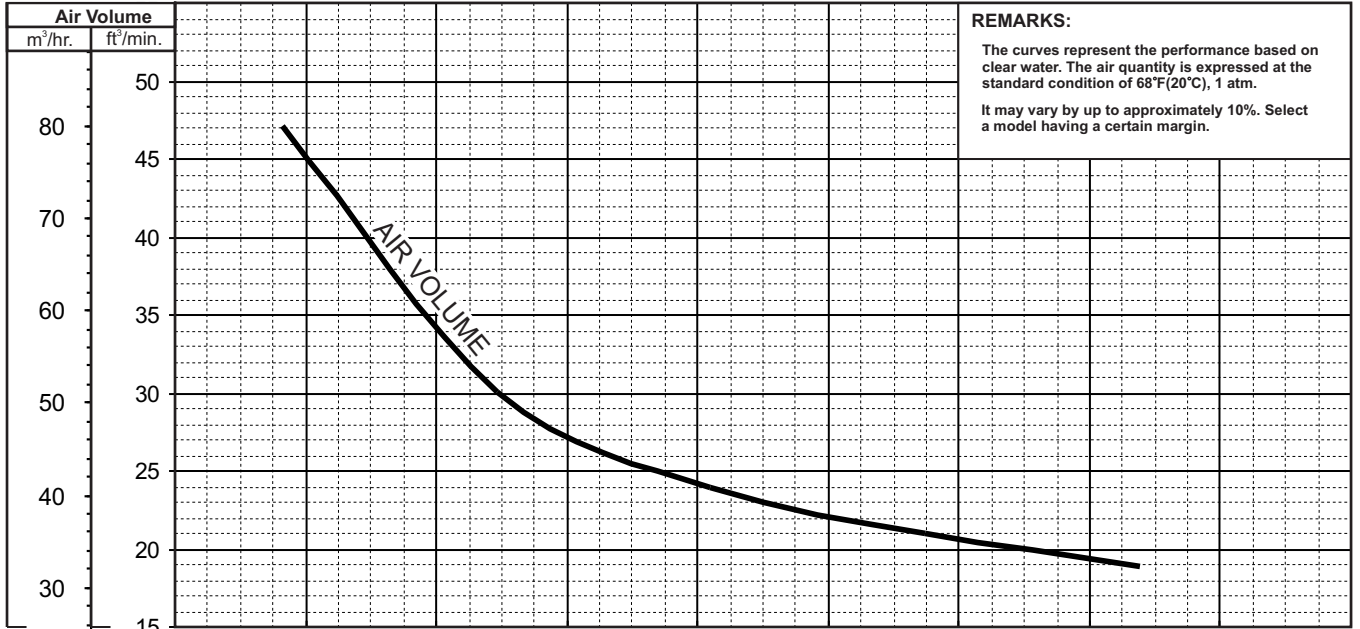




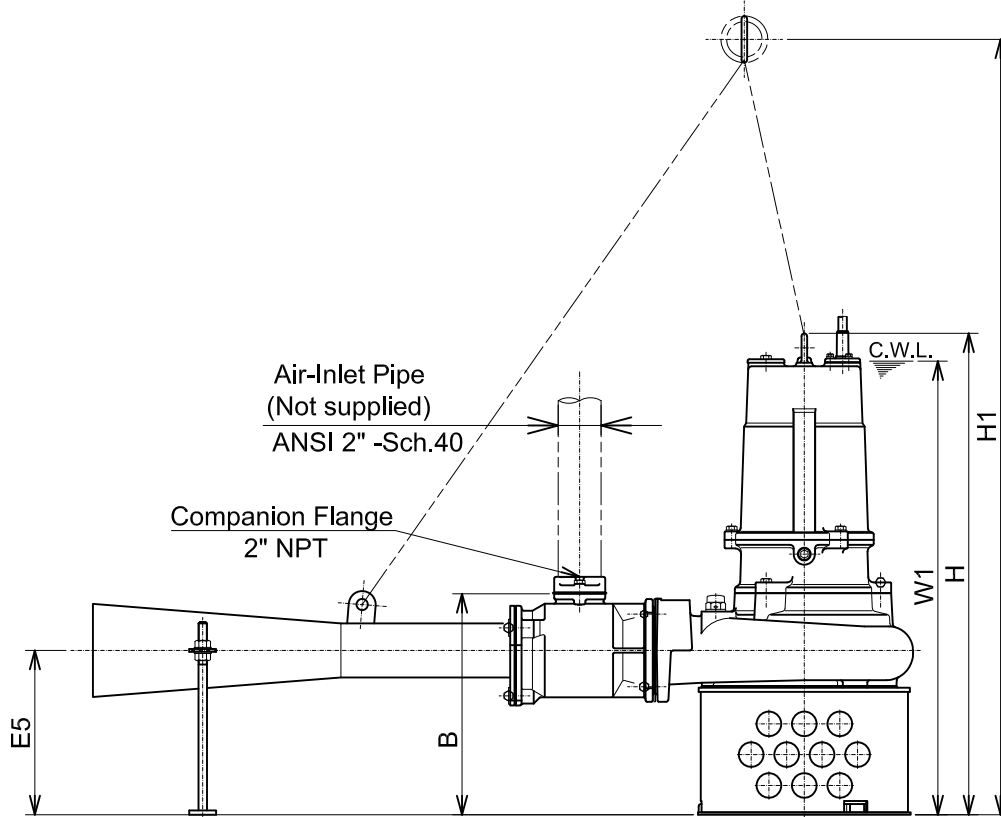
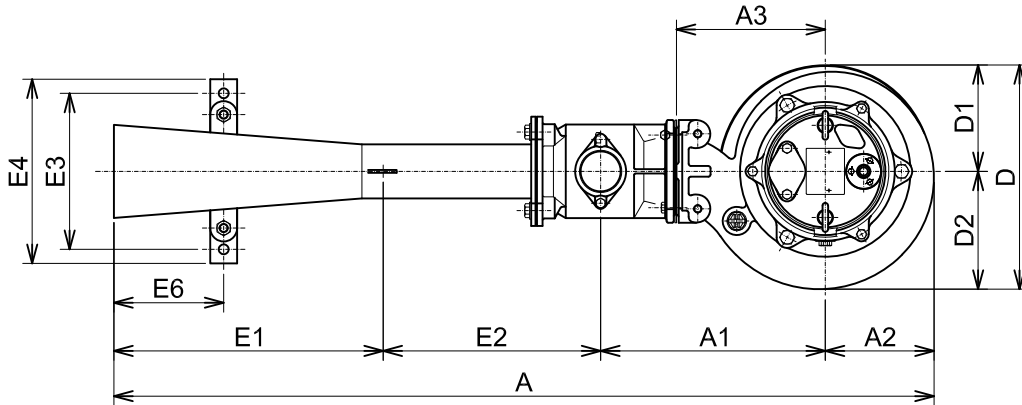
BER - SERIES SUBMERSIBLE - EJECTOR / AERATOR

PERFORMANCE CURVE

MODEL	AIR INLET BORE	HP	KW	RPM	SOLIDS DIA	LIQUID	SG.	VISCOSITY	TEMP.
(TOS-)22-BER5	2" / 50mm	3	2.2	1700	1.378"/35mm	Water	1.0	1.123 cSt.	68°F
MIXING AREA	MAX. DEPTH	PHASE	VOLTAGE	AMPERAGE	HZ	STARTING METHOD	INS. CLASS		
269 ft ² / 25.0 m ²	14.8 ft / 4.5 m	Three	208-230 / 460	9.4-8.5 / 4.3	60	Direct On Line	E		
CURVE No.	DATE	PHASE	VOLTAGE	AMPERAGE	HZ	STARTING METHOD	INS. CLASS		
-	-	-	-	-	-	-	-		



22-BER5
37-BER5



C.W.L. : Continuous running Water Level

DIMENSIONS:USCS (Inch)

Model	HP	Air-Inlet Dia.	Ejector Pump & Motor														C.W.L.	*Wt. (lbs.)		
			A	A1	A2	A3	B	D	D1	D2	H	H1	E1	E2	E3	E4			E5	E6
22-BER5	3	2"	45 9/16	12 1/2	6 1/16	8 1/4	12 5/16	12 7/16	5 7/8	6 9/16	26 3/4	43 1/16	14 15/16	12 1/16	8 11/16	10 1/4	9 1/8	6 1/8	25 1/4	165
37-BER5	5	2"	45 13/16	12 1/2	6 1/4	8 1/4	12 1/2	12 13/16	5 7/8	6 7/8	29 5/8	45 1/16	14 15/16	12 1/16	8 11/16	10 1/4	9 5/16	6 1/8	28	201

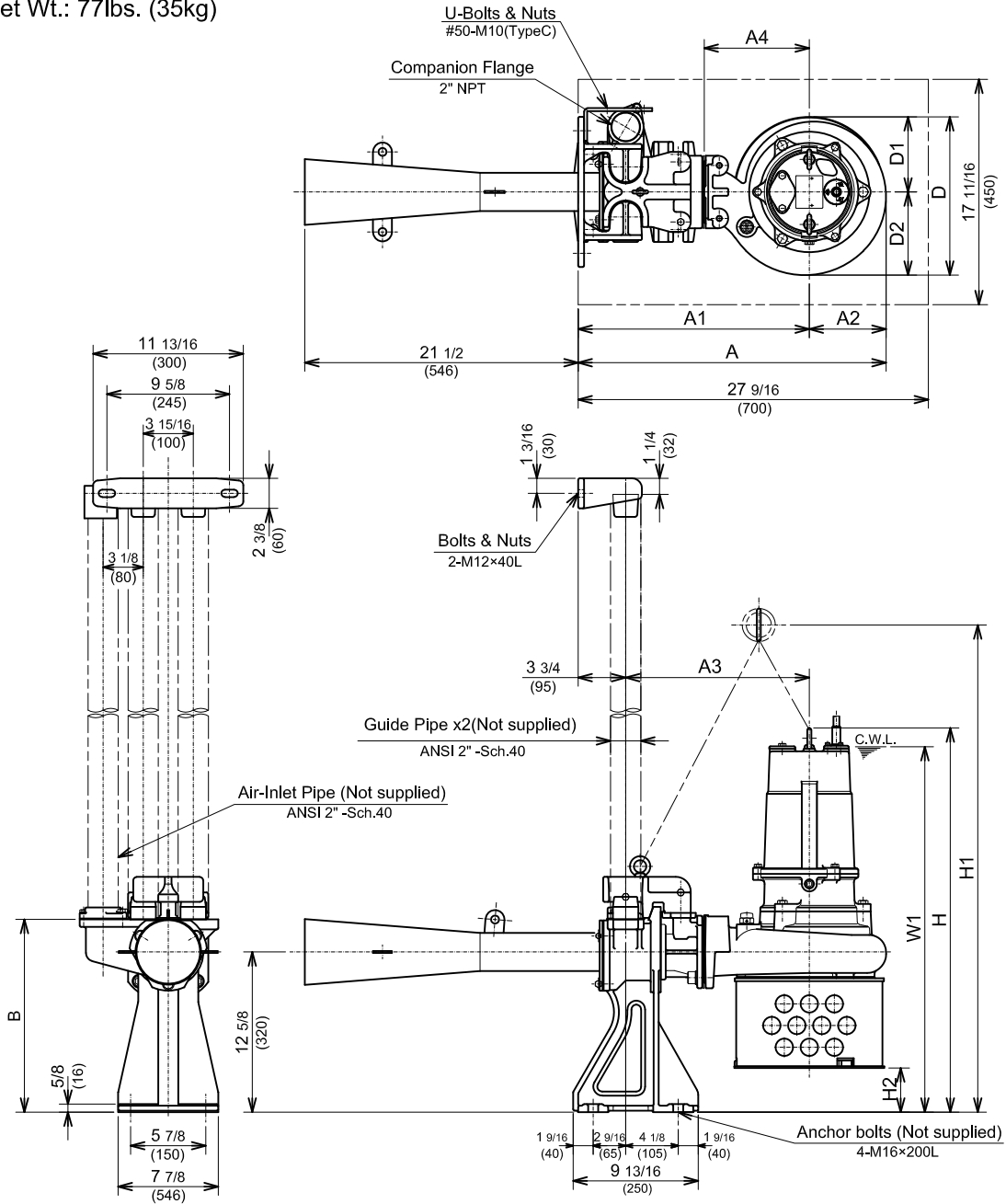
*Excluding Cable

DIMENSIONS:METRIC (mm)

Model	kW	Air-Inlet Dia.	Ejector Pump & Motor														C.W.L.	*Wt. (kg)		
			A	A1	A2	A3	B	D	D1	D2	H	H1	E1	E2	E3	E4			E5	E6
22-BER5	2.2	50	1158	317	154	210	312	316	150	166	679	1094	380	307	220	260	232	155	640	75
37-BER5	3.7	50	1163	317	159	210	317	325	150	175	753	1145	380	307	220	260	237	155	710	91

Guide Rail Ejector set
Model: TOS-EJECTOR 22/37 NPT
Ejector set Wt.: 77lbs. (35kg)

TOS-22BER5
TOS-37BER5



C.W.L. : Continuous running Water Level

DIMENSIONS:USCS (Inch)

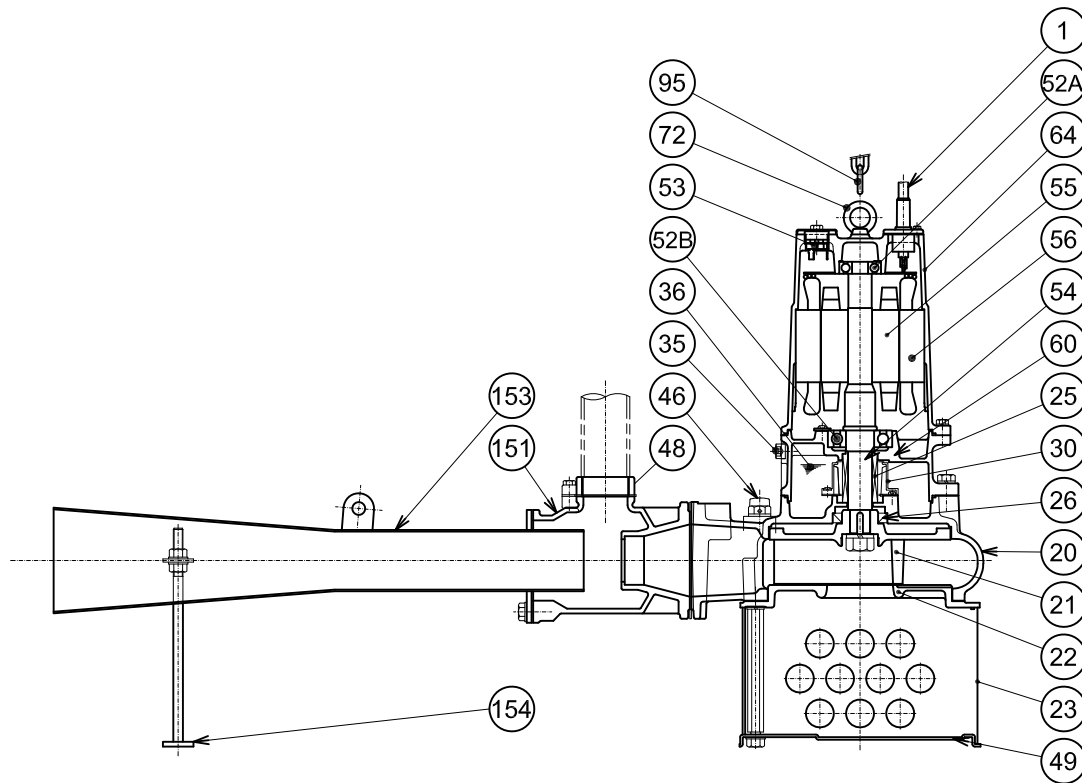
Model	HP	Air-Inlet Dia.	Ejector Pump & Motor											C.W.L. W1	*Wt. (lbs.)	
			A	A1	A2	A3	A4	B	D	D1	D2	H	H1			H2
TOS-22BER5	3	2"	24 1/4	18 3/16	6 1/16	14 7/16	8 1/4	15 3/16	12 7/16	5 7/8	6 9/16	30 3/16	38 5/16	3 7/16	28 3/4	134
TOS-37BER5	5	2"	24 7/16	18 3/16	6 1/4	14 7/16	8 1/4	15 3/16	12 13/16	5 7/8	6 7/8	32 15/16	41 1/4	3 1/4	31 1/4	170

DIMENSIONS:METRIC (mm)

*Excluding Cable & Guide Rail System

Model	kW	Air-Inlet Dia.	Ejector Pump & Motor											C.W.L. W1	*Wt. (kg)	
			A	A1	A2	A3	A4	B	D	D1	D2	H	H1			H2
TOS-22BER5	2.2	50	616	462	154	367	210	385	316	150	166	767	973	88	730	61
TOS-37BER5	3.7	50	621	462	159	367	210	385	325	150	175	836	1048	83	795	77

22-BER5
37-BER5



	22-BER5	37-BER5
*1	AWG14/4- 32ft	AWG12/4- 32ft
*2	H-30A	H-35A
*3	TC-456812	TC-507212
*4	6307ZC3	6309ZC3

PART#	DESCRIPTION	MAIN MATERIAL / NOTE	RELATED ASTM, AISI CODE	RELATED EN CODE	QTY
1	Power Cable	PVC Sheath *1			1
20	Pump Casing	Cast Iron	A48M Class30B	EN 1561 GJL-200	1
21	Impeller	Cast Iron	A48M Class30B	EN 1561 GJL-200	1
22	Suction Cover	Cast Iron	A48M Class30B	EN 1561 GJL-200	1
23	Suction Strainer	Steel (Hot Rolled)	A1011	EN 10111	1
25	Mechanical Seal	Silicon Carbide *2			1
26	Oil Seal	NBR *3			1
30	Oil Lifter	PBT Plastic w/(GF+MD)40			1
35	Oil Plug	Stainless Steel	S 30400	1.4301	1
36	Lubricant	Turbine Oil ISO VG32 or SAE 10W-20			
46	Air Valve	Nylon			1
48	Companion Flange	Cast Iron / NPT 2"	A48M Class30B	EN 1561 GJL-200	1
49	Bottom Plate	Steel (Cold Rolled)	A109/A1008	EN 10130	1
52A	Upper Bearing	6304ZC3			1
52B	Lower Bearing	*4			1
53	Motor Protector				1
54	Shaft	Stainless Steel	S 42000	1.4028	1
55	Rotor				1
56	Stator				1
60	Bearing Housing	Cast Iron	A48M Class25B	EN 1561 GJL-150	1
64	Motor Housing	Cast Iron	A48M Class25B	EN 1561 GJL-150	1
72	Lifting Lug Bolt	Stainless Steel	S 30400	1.4301	2
95	Chain	Steel - 16ft	A283 Grade D	EN 10025 S275	1
151	Suction Casing	Cast Iron	A48M Class30B	EN 1561 GJL-200	1
153	Diffuser	Stainless Steel	S 30400	1.4301	1
154	Diffuser	Stainless Steel	S 30400	1.4301	1