

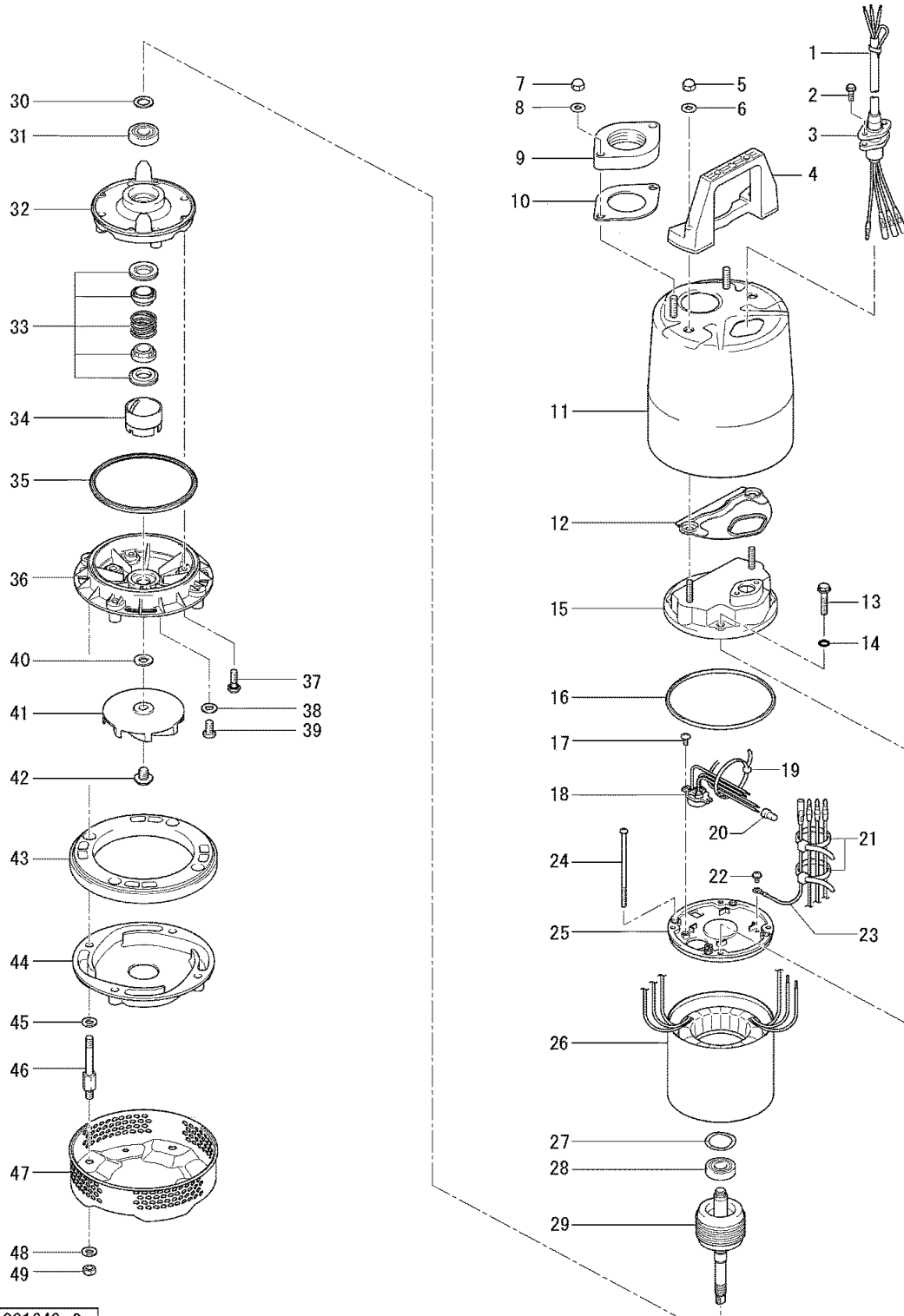
PARTS LIST		CORROSION RESISTANT PUMP			4/16/2024	
ITEM	PART No.	DESCRIPTION	QTY	SIZE	MATERIAL	NOTES
1	001-803-20	Cabtyre Cable Set (32') 60Hz(USA)	1	VCT4Cx16AWG	LBT	
2	140-427-17	Hex.Bolt (w/Plain Washer)	2	M5x15	SUS304	
3	003-190-10	Gland	1		SUS316	
4	068-000-01	Handle	1		Resin	
5	141-030-12	Hex.Cap Nut	2	M8	SUS304	
6	142-127-10	Plain Washer	2	M8	SUS304	
7	141-030-12	Hex.Cap Nut	2	M8	SUS304	
8	142-127-10	Plain Washer	2	M8	SUS304	
9	048-274-18	Screwed Flange	1	NPT-2(P.C.90)	Resin	
10	121-469-12	Packing	1	P.C.90xd58x2t	NR	
11	065-000-72	Outer Cover	1	SQ50A,0.4kw	SUS316	
12	121-000-12	Packing	1	SQ(P.C.108)	NBR	
13	140-000-07	Hex.Bolt (w/Plain Washer)	4	M6x30(22L)	SUS304	
14	122-004-18	O-Ring	4	P-6(5.8xd1.9)	NBR	
15	051-000-73	Head Cover	1		Resin	
16	121-001-69	Packing	1	d126.6xd135.6x6t(60)	NBR	
17	143-000-43	Truss Screw	2	M4x8	SWRM	
18	053-001-61	Motor Protector 208/230V-60Hz(USA)	1	KA311-DAXL78	(H.C)	
18	053-002-37	Motor Protector 460V-60Hz(USA)	1	KA311-DAXL63	(H.C)	
18	053-002-38	Motor Protector 575V-60Hz(USA)	1	KA311-DATL65	(H.C)	
19	181-000-10	Cable Tie	1	CV-100	Nylon	
20	009-119-13	Terminal	3	CE-2	CU	
21	181-000-10	Cable Tie	2	CV-100	Nylon	
22	143-000-44	Pan Screw (w/Spring Washer)	1	M4x5	C3604	
23	009-001-64	Earth Terminal	1Set	UL1015-AWG18,G/Y,L=115		
24	143-000-68	Pan Screw	4	M5x138L(30L)	SWRM	
25	050-000-02	Motor Bracket	1		ADC	
26	056-011-01	Stator(w/M.Frame) 208/230V-60Hz(USA)	1Set			
26	056-011-50	Stator(w/M.Frame) 460V-60Hz(USA)	1Set			
26	056-011-51	Stator(w/M.Frame) 575V-60Hz(USA)	1Set			
27	142-000-41	Wave Washer	1	#6201(T=0.4)	S65CM	
28	052-100-15	Bearing	1	6201ZZC3		
29	055-004-04	Rotor	1Set	w/Bearing		
30	061-180-17	Bearing Collar	1	d15.1xd20x1.6t	SS	
31	052-152-12	Bearing	1	6302ZZC3		
32	060-001-81	Bearing Housing	1		ADC	
33	025-000-78	Mechanical Seal	1	W-14HL(ROHS)	SIC	
34	030-000-12	Oil Lifter	1	W-14HL	Resin	

PARTS LIST		CORROSION RESISTANT PUMP			4/16/2024	
ITEM	PART No.	DESCRIPTION	QTY	SIZE	MATERIAL	NOTES
35	121-001-12	Packing	1	VANCS2	NBR	
36	029-001-26	Oil Casing	1	SQ(A)2	Resin	
37	143-000-26	Truss Screw (w/O-Ring)	4	M6x20(P-5,NBR)	SUS304	
38	121-246-11	Packing	1	d10.3xd16x2t	PE	
39	035-127-15	Oil Plug	1	M10x15	SUS304	
40	142-354-18	Conical Spring Washer	1	d11.2xd22.5x0.8t	SUS304	
41	021-011-29	Impeller (60Hz)	1	50SQ2-2.75-61	Resin	interchangable w/OLD part# 021-011-29
42	143-140-12	Truss Screw (w/Plain Washer)	1	M6x12	SUS304	
43	020-003-67	Pump Casing (Upper)	1	SQ	NBR	
44	020-003-68	Pump Casing (Lower)	1	SQ	SCS13	
45	142-126-19	Plain Washer	4	M6	SUS304	
46	144-001-14	Stud Bolt	4	M6x80L(51/9.5)	SUS304	
47	023-002-12	Strainer Stand	1	50SQ2-2.4(S)/2.75	SUS304	
48	142-126-19	Plain Washer	4	M6	SUS304	
49	141-000-20	Hex.Nut	4	M6(2)	SUS304	
	173-003-74	Packing O-Ring Set	1Set	(Marked by *)		
11	121-469-12	Packing (Screwed Flange)	1	P.C.90xd58x2t	NR	
12	121-000-12	Packing (Out.Cover/Head Cover)	1	SQ(P.C.108)	NBR	
14	122-004-18	O-Ring (Head Cover Fixing Bolt)	4	P-6(5.8xd1.9)	NBR	
16	121-001-69	Packing (Head Cover/M.Frame)	1	d126.6xd135.6x6t(60)	NBR	
35	121-001-12	Packing (M.Frame/P.Casing)	1	VANCS2	NBR	
37	122-003-17	O-Ring (P.Casing Fixing Screw)	4	P-5(4.8xd1.9)	NBR	
38	121-246-11	Packing (Oil Plug)	1	d10.3xd16x2t	PE	
	--	Lubricant		Liquid Paraffin VG32 240ml		*

PARTS LIST		CORROSION RESISTANT PUMP			4/16/2024	
ITEM	PART No.	DESCRIPTION	QTY	SIZE	MATERIAL	NOTES

EXPLODED VIEW

50SQ2-2.75-61



C-001610-2

* Indicates items included in set



MODEL 50SQ2-2.75-61

PARTS LIST		CORROSION RESISTANT PUMP			4/16/2024	
ITEM	PART No.	DESCRIPTION	QTY	SIZE	MATERIAL	NOTES
	C-U01040-Z					