

PARTS LIST		WASTEWATER PUMP			6/8/2022	
ITEM	PART No.	DESCRIPTION	QTY	SIZE	MATERIAL	NOTES
1	001-938-25	Cabtyre Cable Set (32') 60Hz (USA)	1	2PNCT4Cx5.5mm2	KR-2	
2	140-035-14	Hex.Bolt	2	M6x20	SUS304	
3	070-107-18	Cable Clamp 208/230V-60Hz(USA)	1		FC	
3	070-107-18	Cable Clamp 460V-60Hz(USA)	1		FC	
3	070-107-18	Cable Clamp 575V-60Hz(USA)	1		FC	
4	140-056-11	Hex.Bolt	4	M8x30	SUS304	
5	142-163-18	Spring Washer	4	M8	SUS304	
6	006-126-14	Stuffing Box 60Hz(USA)	1	No.2	FC	
7	008-143-13	Mould Cover 60Hz(USA)	1	KR2-8	CR	
8	143-085-21	Pan Screw (w/Spring Washer)	1	M4x6	SWRM	
9	009-130-10	Terminal 60Hz(USA)	1	R-5.5-4	CU	
10	009-276-19	Compression type Terminal 60Hz(USA)	3	TMNB-5.5(Insulated)		
11	072-107-27	Eye Bolt	2	M16	SUS304	
12	142-399-15	Washer		d17xd29x0.1t	SUS304	
	142-400-10	Washer		d17xd29x0.3t	SUS304	
13	140-098-15	Hex.Bolt	4	M12x35	SUS304	
14	142-165-10	Spring Washer	4	M12	SUS304	
15	050-001-21	Motor Bracket	1		FC200	
16	122-173-19	O-Ring	1	V-225(222.5xd6)	NBR	*
17	142-198-12	Wave Washer	1	6306	SK5	
18	052-000-25	Bearing (w/O-ring)	1	AC-6306ZZC3		
19	143-126-25	Pan Screw (w/Spring Washer/Plain Washer)	2	M4x12	SWRM	
20	053-000-05	Motor Protector 208/230V-60Hz(USA)	1	KA314-HLBL00	(B.C)	
20	053-192-17	Motor Protector 460V/575V-60Hz(USA)	1	KA314-HKXL00	(B.C)	
21	058-000-09	Lead Wire Protection Plate	1	d86xd224x1.6t	SPHC	
22	055-000-08	Rotor	1Set			
23	147-163-13	Impeller Key	1	10x8x32L	SUS420	
24	056-010-36	Stator 208/230V-60Hz(USA)	1Set			
24	056-010-37	Stator 460V-60Hz(USA)	1Set			
24	056-010-38	Stator 575V-60Hz(USA)	1Set			
	181-000-03	Cable Tie	2	T50S,158Lx4.7Bx35D	Nylon	
25	002-000-02	Protection Tube	m	NFG-1A,d7	(Vm)	
26	009-000-31	Terminal	3	R-5.5-S4	CU	
27	140-100-11	Hex.Bolt	4	M12x45	SUS304	
28	142-165-10	Spring Washer	4	M12	SUS304	
29	064-000-71	Motor Frame	1		FC200	
30	122-173-19	O-Ring	1	V-225(222.5xd6)	NBR	*

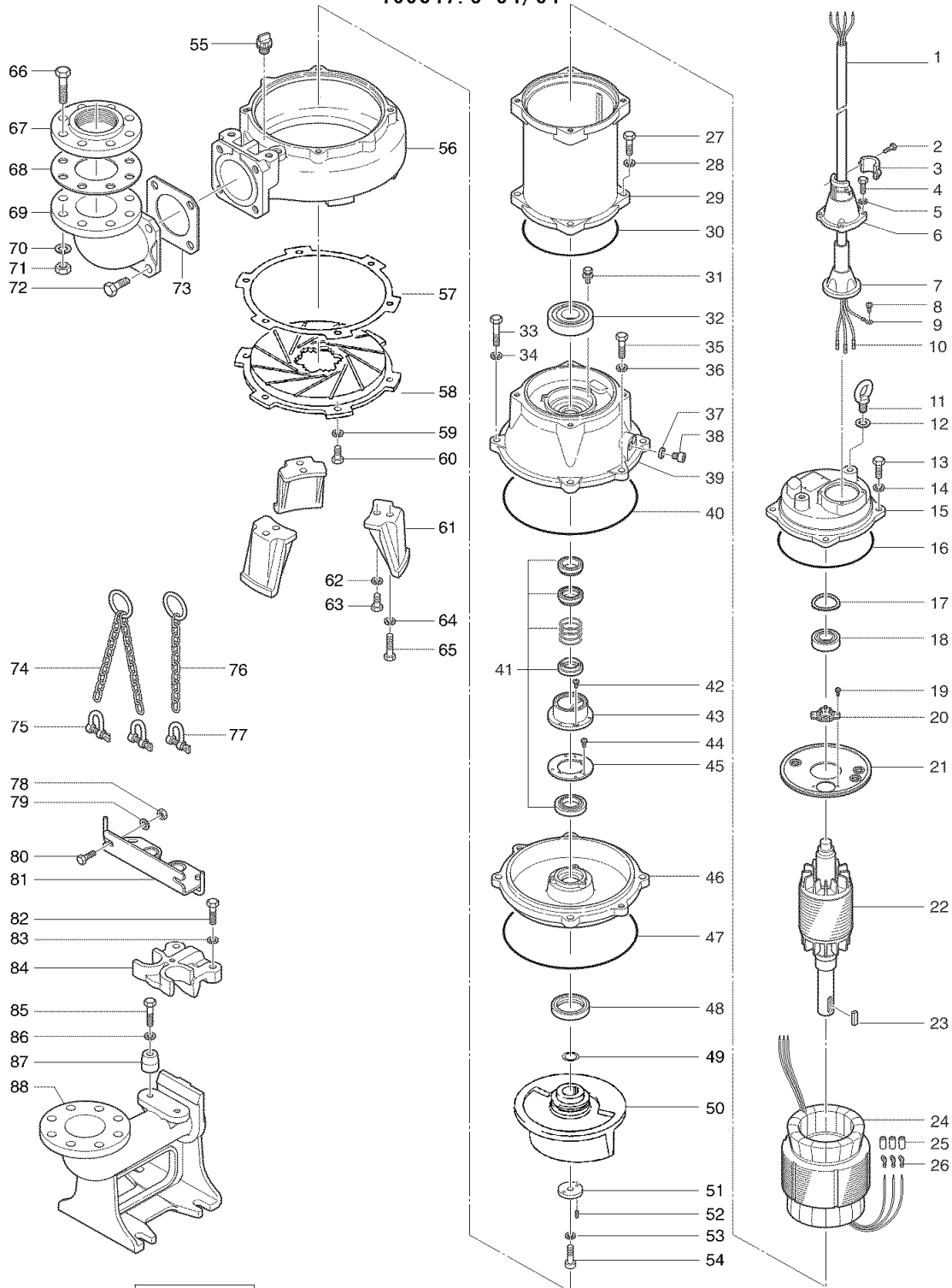
PARTS LIST		WASTEWATER PUMP			6/8/2022	
ITEM	PART No.	DESCRIPTION	QTY	SIZE	MATERIAL	NOTES
31	140-000-06	Hex.Bolt (w/Spring Washer/Plain Washer)	3	M6x12	SWCH	
32	052-001-08	Bearing	1	6309ZZC3(SRL)		
33	140-104-15	Hex.Bolt	4	M12x65	SUS304	
34	142-165-10	Spring Washer	4	M12	SUS304	
35	140-099-16	Hex.Bolt	2	M12x40	SUS304	
36	142-165-10	Spring Washer	2	M12	SUS304	
37	121-247-12	Packing	2	d12.3xd18x2t	Polyethylene	*
38	035-113-18	Oil Plug	2	M12x14	SUS304	
39	060-002-31	Bearing Housing	1		FC200	
40	122-159-19	O-Ring	1	G-280(279.3xd5.7)	NBR	*
41	025-195-39	Mechanical Seal	1	H-35	SIC	
42	143-070-23	Pan Screw	2	M5x6	SWRM	
43	030-156-18	Oil Lifter	1	H-35(A)(T)	Resin	
44	143-070-10	Pan Screw	3	M5x6	SWRM	
45	030-150-12	Seal Stopper	1	H-35(A)(T)	SPCC	
46	029-187-14	Oil Casing	1	100-5.5/7.5-4B2	FC200	
47	122-159-19	O-Ring	1	G-280(279.3xd5.7)	NBR	*
48	026-115-12	Oil Seal	1	TC-608212	NBR	
49	040-124-18	Impeller Shim		d25.2xd34x0.3t	SUS304	
50	021-810-22	Impeller (60Hz)	1	10047.5-64	FC	
	021-809-15	Impeller (50Hz) OPTION	1	100C47.5-54	FC	50Hz OPTION
51	142-202-10	Impeller Fixing Washer	1	d13xd50x15t	SUS304	
52	144-530-16	Hex.Socket Set Screw	2	M6x15	SUS304	
53	142-000-22	Spring Washer	1	M12(CP)	SUS304	
54	140-304-17	Hex.Socket Cap Bolt	1	M12x45	SUS304	
55	046-107-13	Air Release Valve	1	PT-1/2	Nylon	
56	020-531-23	Pump Casing	1	100-5.5/7.5-4B2	FC	
57	120-102-11	Packing (S.Cover)		d301xd328x0.3t	Polyethylene	
58	022-521-13	Suction Cover	1	100-5.5/7.5-4B2	FC200	
59	142-165-10	Spring Washer	3	M12	SUS304	used w/guiderail version (no stand)
60	140-097-14	Hex.Bolt	3	M12x30	SUS304	used w/guiderail version (no stand)
61	023-288-18	Pump Stand	3	55/110-CE2	FC	INCLUDED IN STAND SET
62	142-165-10	Spring Washer	3	M12	SUS304	INCLUDED IN STAND SET
63	140-097-14	Hex.Bolt	3	M12x30	SUS304	INCLUDED IN STAND SET
64	142-165-10	Spring Washer	3	M12	SUS304	INCLUDED IN STAND SET
65	140-099-16	Hex.Bolt	3	M12x40	SUS304	INCLUDED IN STAND SET
66	140-000-56	Hex.Bolt	8	M16x75	SWRM	INCLUDED IN BEND-100x100 KIT

PARTS LIST		WASTEWATER PUMP			6/8/2022	
ITEM	PART No.	DESCRIPTION	QTY	SIZE	MATERIAL	NOTES
67	048-000-40	Screwed Flange	1	JIS10Kx100mm(PT)	FC	INCLUDED IN BEND-100x100 KIT
68	121-106-34	Packing	1	JIS10Kx100mm	NR	INCLUDED IN BEND-100x100 KIT
69	037-000-32	Discharge Bend	1	100x100mm(S-4)	FC	INCLUDED IN BEND-100x100 KIT
70	142-166-37	Spring Washer	8	M16	SWRH	INCLUDED IN BEND-100x100 KIT
71	141-008-11	Hex.Nut	8	M16	SUS304	INCLUDED IN BEND-100x100 KIT
72	140-124-11	Hex.Bolt	4	M16x40	SUS304	INCLUDED IN BEND-100x100 KIT
73	121-153-10	Packing	1	160mm2(P.C.165)	NBR	INCLUDED IN BEND-100x100 KIT
74-88		SEE TOS-100x100 PARTS LIST				
	173-001-22	Packing O-Ring Set	1Set	(Marked by *)		
16	122-173-19	O-Ring (M.Bracket/M.Frame)	1	V-225(222.5xd6)	NBR	*
30	122-173-19	O-Ring (M.Frame/Brg.Housing)	1	V-225(222.5xd6)	NBR	*
37	121-247-12	Packing (Oil Plug)	2	d12.3xd18x2t	Polyethylene	*
40	122-159-19	O-Ring (Brg.Housing/O.Casing)	1	G-280(279.3xd5.7)	NBR	*
47	122-159-19	O-Ring (O.Casing/P.Casing)	1	G-280(279.3xd5.7)	NBR	*
72	121-153-10	Packing (Discharge Bend)	1	160mm2(P.C.165)	NBR	*
		Lubricant		Turbine Oil VG32 4,800ml		

PARTS LIST		WASTEWATER PUMP			6/8/2022	
ITEM	PART No.	DESCRIPTION	QTY	SIZE	MATERIAL	NOTES

EXPLODED VIEW

100C45.5-54/64
100C47.5-54/64



C-001614-1

* Indicates items included in set