

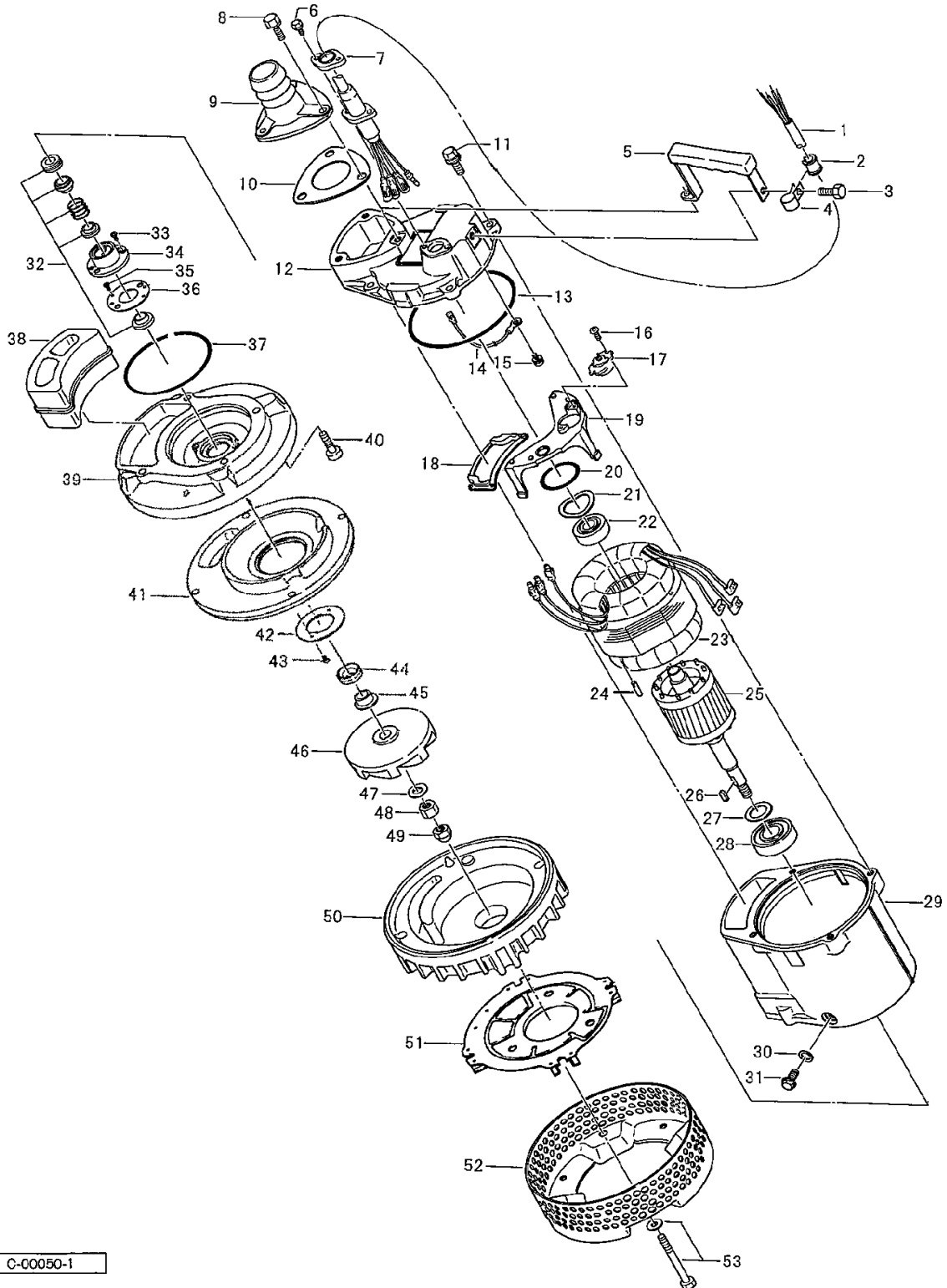
PARTS LIST		LIGHTWEIGHT DEWATERING PUMP			9/10/2024	
ITEM	PART No.	DESCRIPTION	QTY	SIZE	MATERIAL	NOTES
1	001-803-33	Cabtyre Cable Set (50') 60Hz (USA)	1	VCT4Cx1.25mm2	LBT	
2	010-126-17	Cable Clip Rubber	1	HS2	NBR	
3	140-487-15	Hex.Bolt (w/plain washer)	1	M8x20	SUS304	
4	010-130-14	Cable Clip	1	HK2-4/15	SPC	
5	068-248-15	Handle	1	KTV2-15/22	SPC+NBR	
6	140-427-17	Hex.Bolt (w/Plain Washer)	2	M5x15	SUS304	
7	003-190-10	Gland	1		SUS316	
8	140-056-11	Hex.Bolt	3	M8x30	SUS304	
9	032-351-11	Hose Coupling	1	KTV2-15(NPT-2)	FC	
	032-355-15	Hose Coupling 3" NPT (optional)	1	NPT-3	FC	OPTIONAL
10	121-001-09	Packing	1	KTV2-15/22	NBR	*
11	140-432-15	Hex.Bolt (w/Spring Washer/Plain Washer)	4	M8x30	SUS304	
12	050-000-43	Motor Bracket	1		ADC	
13	122-473-12	O-Ring	1	150xd3.3	NBR	*
14		Earth Terminal	1Set			
15	143-085-34	Pan Screw (w/Spring Washer)	1	M4x6	C3604	
16	143-138-17	Truss Tapping Screw	2	M4x12	SWCH	
17	053-194-22	Motor Protector 220V-60Hz(USA)	1	KA313-GBXL103	(T)	
	053-272-12	Motor Protector 440V-60Hz(USA)	1	KA311-DAXL78	(T)	
		Motor Protector 575V-60Hz(USA)	1		(T)	
18	121-445-12	Packing (Water Way, Upp.)	1	KTV2-15/22	NBR	*
19	058-167-18	Protection Plate	1	KTV2-15/22	Bakelite	
20	122-293-16	O-Ring	1	47xd3.1	NBR	*
21	142-195-19	Wave Washer	1	6204/6303(d47x,0.3t)	SK5	
22	052-001-49	Bearing	1	6204ZZC3		replaces OLD item# 052-103-18
23	056-662-12	Stator 220V-60Hz(USA)	1Set			
	056-722-11	Stator 440V-60Hz(USA)	1Set			
		Stator 575V-60Hz(USA)	1Set			
24	145-028-19	Stator Set Pin	1	d6x32	S45C	
25	055-661-18	Rotor	1Set	w/Bearing		
26	147-128-16	Impeller Key	1	5x5x18.5l	SUS403	
27	061-161-12	Bearing Collar	1	d25.1xd36x1.6t	SPC	
28	052-108-13	Bearing	1	6305ZZC3		
29	064-000-84	Motor Frame	1		ADC	
30	121-246-11	Packing	1	d10.3xd16x2t	PE	*
31	035-125-13	Oil Plug	1	M10x20(B=13)	SUS304	
32	025-243-17	Mechanical Seal	1	H-20T	SiC	

PARTS LIST		LIGHTWEIGHT DEWATERING PUMP			9/10/2024	
ITEM	PART No.	DESCRIPTION	QTY	SIZE	MATERIAL	NOTES
33	143-070-23	Pan Screw	2	M5x6	SWRM	
34	030-144-13	Oil Lifter	1	H-20(A)(T)	Resin	
35	143-070-10	Pan Screw	2	M5x6	SWRM	
36	030-155-17	Seal Stopper	1	H-20(KTV2)	SPCC	
37	122-134-18	O-Ring	1	G-115(114.4xd3.1)	NBR	*
38	121-001-04	Packing (Water Way, Low.)	1	KTV2-15/22	SBR	
39	029-000-77	Oil Casing	1	KTV2-15/22	ADC	interchangable with OLD part#029-408-14
40	140-270-13	Hex.Socket Cap Bolt	4	M8x30	SUS304	
41	058-000-25	Protection Plate	1	d44xd70x3t	SUS304	interchangable with OLD part#058-000-10
42	143-166-14	Flat Screw	2	M4x8	SUS304	
43	031-000-08	Wear Ring	1	KTV2-15/22	BR+NR	
44	122-443-13	V-Ring	1	VR-20	NBR	
45	071-297-19	Shaft Sleeve	1	d16xd20x10l	SUS304	
46	021-F73-17	Impeller (60Hz)	1	60Hz	FCD	
47	142-129-12	Plain Washer	1	M12	SUS304	
48	141-007-10	Hex.Nut	1	M12	SUS304	
49	141-032-14	Hex.Cap Nut	1	M12	SUS304	
50	020B1918	Pump Casing	1	KTV2-15/22	BR+NR	
51	127-249-12	Fixing Plate	1	KTV2-15/22	SPCC	
52	023-432-19	Strainer Stand	1	KTV2-15/22	SPCC	
53	142-127-23	Hex.Bolt w/plain washer	4	M8x85	SUS304	
		Packing O-Ring Set	1Set	(Marked by *)		
	173-472-19	Packing (Hose Coupling)	1	KTV2-15/22	NBR	*
10	121-001-09	O-Ring (M.Bracket/M.Frame)	1	150xd3.3	NBR	*
13	122-473-12	Packing (Water Way, Upp.)	1	KTV2-15/22	NBR	*
18	121-445-12	O-Ring (Upp. Bearing)	1	47xd3.1	NBR	*
20	122-293-16	Packing (Oil Plug)	1	d10.3xd16x2t	PE	*
30	121-246-11	O-Ring (M.Frame/O.Casing)	1	G-115(114.4xd3.1)	NBR	*
37	122-134-18	Packing (Water Way, Low.)	1	KTV2-15/22	SBR	*
	121-001-04	Lubricant		Turbine Oil VG32 270ml		

PARTS LIST		LIGHTWEIGHT DEWATERING PUMP			9/10/2024	
ITEM	PART No.	DESCRIPTION	QTY	SIZE	MATERIAL	NOTES

EXPLODED VIEW

KTV2-15/22



C-00050-1