

PARTS LIST		VANCS WASTEWATER PUMP				11/21/2019
ITEM	PART No.	DESCRIPTION	QTY	SIZE	MATERIAL	NOTES
1	106-000-01	Float Set	1Set	AO2-2(400L/600L)		
2	143-000-45	Tapping Screw	2	M5x25	SUS304	
3	001-001-88	Cabtyre Cable Set (32') 60Hz (USA)	1	VCT4Cx2mm2	BE(40)	
4	143-000-45	Tapping Screw	3	M5x25	SUS304	
5	003-000-13	Gland	1	BECE(P.C.40)	SUS304	included in ITEM#3 cable set
6	109-129-19	Float Support Bush	1	d14	Rubber	
7	143-143-15	Truss Tapping Screw	1	M4x16(D=8)	SUS304	
8	109-131-27	Float Support Pipe	1	d14x250l	PVC	
9	109-000-20	Holder	1		Resin	
10	143-143-15	Truss Tapping Screw	1	M4x16(D=8)	SUS304	
11	143-174-15	Tapping Screw	2	M4x14	SUS304	
12	051-000-42	Motor Head Cover	1		Resin	
13	141-029-18	Hex.Cap Nut	4	M6	SUS304	
14	142-126-19	Plain Washer	4	M6	SUS304	
15	009-001-10	Intermediate Lead Wire	1Set	AWG12x170L,Red		
16	009-001-11	Intermediate Lead Wire	1Set	AWG12x170L,Black		
17	114-000-02	Electromagnetic Contactor	1Set	G7L-2A-B(AC24V)		
18	143-000-55	Pan Tapping Screw	2	M4x12	SWCH	
19	116-000-01	Fixing Plate	1	G7L-2A-B		
20	143-152-17	Truss Tapping Screw	2	M3x8	SWCH	
21	115-000-01	Transformer 208/220V-60Hz(USA)	1	AJ200/20		
	115-000-05	Transformer 460V-60Hz(USA)	1	AJ460/20		
	115-000-06	Transformer 575V-60Hz(USA)	1	AJ525/20		
22	143-152-17	Truss Tapping Screw	2	M3x8	SWCH	
23	114-000-01	Relay Unit	1Set	AJRH2B-UT(AC24V)		
24	143-138-17	Truss Tapping Screw	2	M4x12	SWCH	
25	053-001-71	Motor Protector 208/220V-60Hz(USA)	1	KA313-GDXL110	(T)	
	053-411-15	Motor Protector 460/575V-60Hz(USA)	1	KA313-GQXL104	(T)	
26	121-001-22	Packing	1	d169xd176x3.1t(P.C.160)	NBR	*
27	143-000-47	Pan Screw	4	M6x215L(20L)	SWRM	
28	142-113-26	Plain Washer	4	M6(D=11.5)	SPC	
29	082-000-02	Head Cover Spacer	1		Resin	
30	121-001-23	Packing	1	VK(T)-22/37(A)T(W)	NBR	*
31	143-085-34	Pan Screw (w/Spring Washer)	1	M4x6	C3604	
32	009-001-08	Earth Terminal	1Set	2mm2x230L		
33	050-000-63	Motor Bracket	1		ADC	
34	056-005-82	Stator(w/M.Frame) 208/220V-60Hz(USA)	1Set			
	056-005-85	Stator(w/M.Frame) 460V-60Hz(USA)	1Set			

PARTS LIST		VANCS WASTEWATER PUMP				11/21/2019
ITEM	PART No.	DESCRIPTION	QTY	SIZE	MATERIAL	NOTES
	056-005-86	Stator(w/M.Frame) 575V-60Hz(USA)	1Set			
35	142-000-75	Wave Washer	1	BBA0630300A0,T=0.3	SUP	
36	052-187-16	Bearing (w/O-ring)	1	AC-6204ZZC3		
37	055-001-79	Rotor	1Set	w/Bearing		
38	147-000-41	Impeller Key	1	5x5x18.5L	SUS304	
39	140-000-06	Hex.Bolt (w/Spring Washer/Plain Washer)	2	M6x12	SWCH	
40	052-109-14	Bearing	1	6306ZZC3		
41	060-001-16	Bearing Housing	1		ADC	
42	025-001-00	Mechanical Seal	1	H-25T (RoHS)	SiC	supercedes 025-255-12 and 025-000-07
43	143-070-23	Pan Screw	2	M5x6	SWRM	
44	030-143-12	Oil Lifter	1	H-25(A)(T)	Resin	
45	143-193-10	Pan Tapping Screw	2	M5x12	SWRM	
46	030-152-14	Seal Stopper	1	H-25(A)(T)	SPCC	
47	121-001-62	Packing	1	d160.4xd169.4x6.5t(P.C.14 4)70	NBR	* interchangeable with OLD part# 121-001-20
48	035-127-15	Oil Plug	1	M10x15	SUS304	
49	121-246-11	Packing	1	d10.3xd16x2t	PE	*
50	029-000-88	Oil Casing	1	80PUT22.2/23.7-51/61	Resin	
51	109-129-19	Float Support Bush	1	d14	Rubber	
52	140-000-09	Hex.Bolt (w/Spring Washer)	4	M8x45	SUS304	
53	143-143-15	Truss Tapping Screw	1	M4x16(D=8)	SUS304	
54	143-000-46	Truss Screw (w/O-Ring)	6	M6x40(P-5,NBR)	SUS304	*
55	021-008-21	Impeller (60Hz)	1	80PSFA22.2-61	Resin	
56	142-000-71	Impeller Washer	1	d11xd31x4t	SUS304	
57	142-164-19	Spring Washer	1	M10	SUS304	
58	140-000-65	Hex. Socket Button Head Screw	1	M10x25	SUS304	
59	122-283-13	O-Ring	1	165xd3.1	NBR	*
60	140-000-09	Hex.Bolt (w/Spring Washer)	4	M8x45	SUS304	
61	048-000-75	Screwed Flange	1	NPT-3(1.5kW)	Resin	
62	121-568-12	Packing	1	d84xd98x5t	NBR	*
63	020-002-33	Pump Casing	1	80PN/65PSF22.2/3.7-51/61	Resin	
64	141-121-11	Hex.Nut	2	M8(B=12)	SUS304	
65	165-000-07	Rubber Feet	5	PU/PN/PSF21.5-52/62	NBR	
66	023-001-07	Strainer	1	65PSF22.2/3.7-51/61	Resin	
67	143-000-10	Truss Tapping Screw	4	M4x18	SUS304	
	173-002-35	Packing O-Ring Set	1Set	(Marked by *)		
26	121-001-22	Packing (Head Cover/Head Cover Spacer)	1	d169xd176x3.1t(P.C.160)	NBR	*
30	121-001-23	Packing (Head Cover Spacer/M.Frame)	1	VK(T)-22/37(A)T(W)	NBR	*
47	121-001-62	Packing (M.Frame/O.Casing)	1	d160.4xd169.4x6.5t(P.C.14 4)70	NBR	* interchangeable with OLD part# 121-001-20



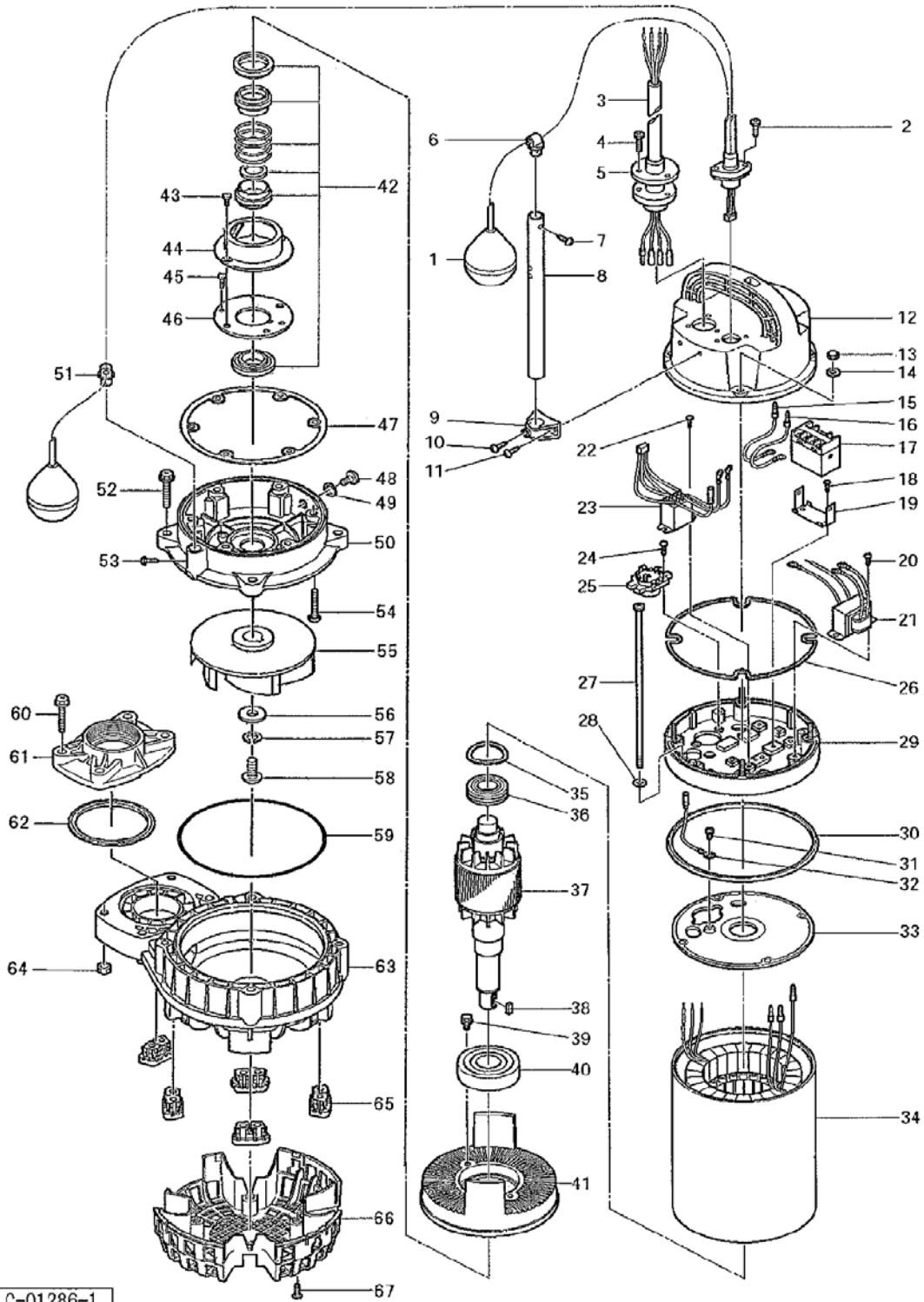
MODEL **80PSFA22.2-61**

PARTS LIST		VANCS WASTEWATER PUMP				11/21/2019
ITEM	PART No.	DESCRIPTION	QTY	SIZE	MATERIAL	NOTES
49	121-246-11	Packing (Oil Plug)	1	d10.3xd16x2t	PE	*
54	122-003-17	O-Ring (O.Casing Bolt)	6	P-5(4.8xd1.9)	NBR	*
59	122-283-13	O-Ring (O.Casing/P.Casing)	1	165xd3.1	NBR	*
62	121-568-12	Packing (Screwed Flange)	1	d84xd98x5t	NBR	*
		Lubricant		Liquid Paraffin VG32 680ml		

PARTS LIST		VANCS WASTEWATER PUMP				11/21/2019
ITEM	PART No.	DESCRIPTION	QTY	SIZE	MATERIAL	NOTES

EXPLODED VIEW

80PSFA22. 2-61



C-01286-1