



**LB - SERIES**  
SEMI-VORTEX - DEWATERING PUMP

**SPECIFICATIONS**

**FEATURES**

1. Semi-vortex urethane rubber or high chrome cast iron impeller suspends solids and allows for pumping of sand and stringy Material.
2. Highly efficient, continuous duty Air-filled, copper wound motor with class E,B insulation minimizes the cost of operation.
3. Built in thermal protection prevents motor failure due to overloading, accidental run-dry and single phasing in three phase units.
4. Double inside mechanical seals with silicon carbide faces running in an oil filled chamber provide for one the most durable seal designs available.
5. Double shielded, permanently lubricated, high temperature C3 ball bearings rated for a

provide for extended operational life.

6. Model LB-480A & LB-800A Automatic Submersible pump performs like the non-automatic version in every aspect of construction site usage requiring a tough and durable pump
7. Slim design allows pumps to fit Into 8" pipes. (Manual type only)

**APPLICATIONS**

1. Residential, commercial, industrial wastewater and site drainage.
2. Decorative waterfalls and fountains.
3. Raw water supply from lakes or rivers.
4. Sediment removal from small sumps or basins.



**SPECIFICATIONS**

- Discharge Size
- Horsepower Range
- Performance Range Capacity Head
- Maximum water temperature
- Materials of Construction
  - Casing
  - Impeller
  - Shaft
  - Motor Frame
  - Fasteners
- Mechanical Seal
  - Elastomers
- Impeller Type
- Solids Handling Capability
- Bearings
- Motor Nomenclature
  - Type, Speed, Hz.
  - Voltage, Phase
- Insulation
- Accessories
- Operational Mode

**STANDARD**

- 2 - 3 "NPT (50 - 80 mm)
- 1/2 - 2HP. (0.40 - 1.5kW)
- 15.9 - 111.0 GPM. (0.06 - 0.42 m<sup>3</sup>/min)
- 13.1 Ft. - 68.9 Ft. (4.0 - 18.9 m)
- 104° F. (40° C.)
- Butadiene Rubber + Natural Rubber + Steel [LB(T)-1500]
- Urethane Rubber , High Chrome Cast Iron [LB(T)-1500]
- 403 Stainless Steel
- Aluminum alloy
- 304 Stainless Steel
- Silicon Carbide
- NBR (Nitrile Butadiene Rubber)
- Semi-vortex, solids handling.
- 0.236" (6.0mm)
- Prelubricated, Double Shielded
- Air Filled, 3600 RPM, 60 Hz.
- 115 / 230V., 1 Phase
- 230 / 460 / 575V., 3 Phase
- Class E, B
- Submersible Power Cable
- 32 - 50' (10 - 15m)
- Manual , Automatic(LB-480A / 800A)

**OPTIONS**

- Length as Required,
- TS-301 Float Switch

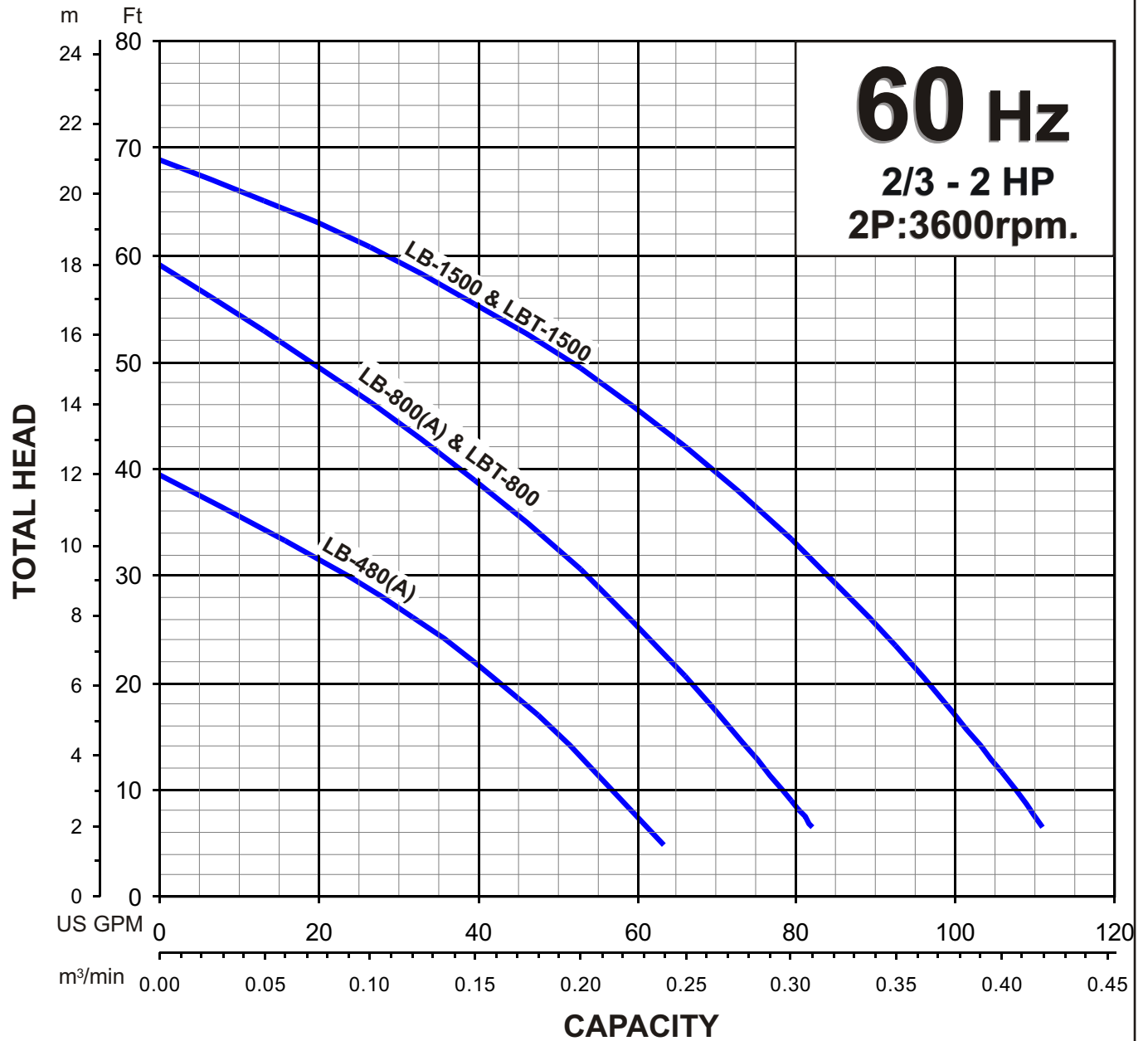


**TSURUMI PUMP**

**LB - SERIES**  
**SEMI-VORTEX - DEWATERING PUMP**

**PERFORMANCE**  
**RANGE**

**GROUP PERFORMANCE RANGE**

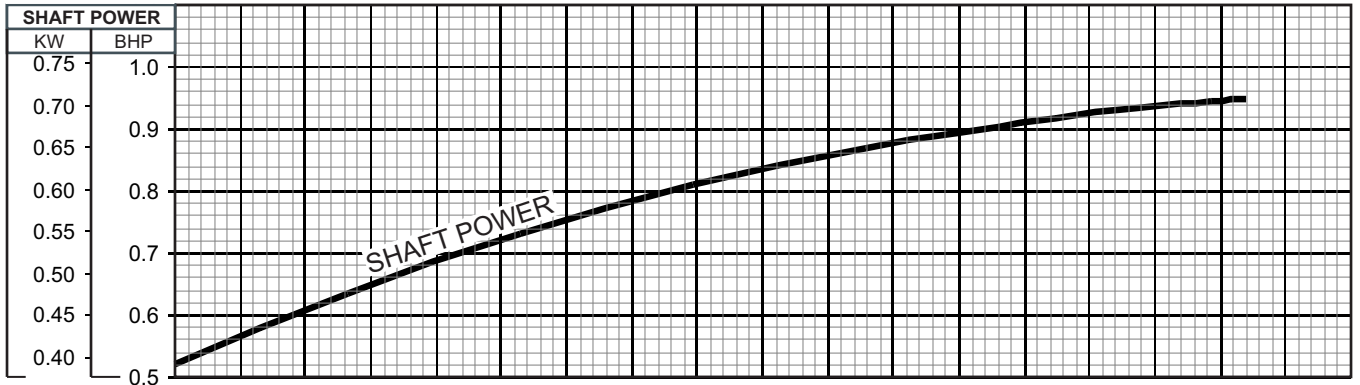
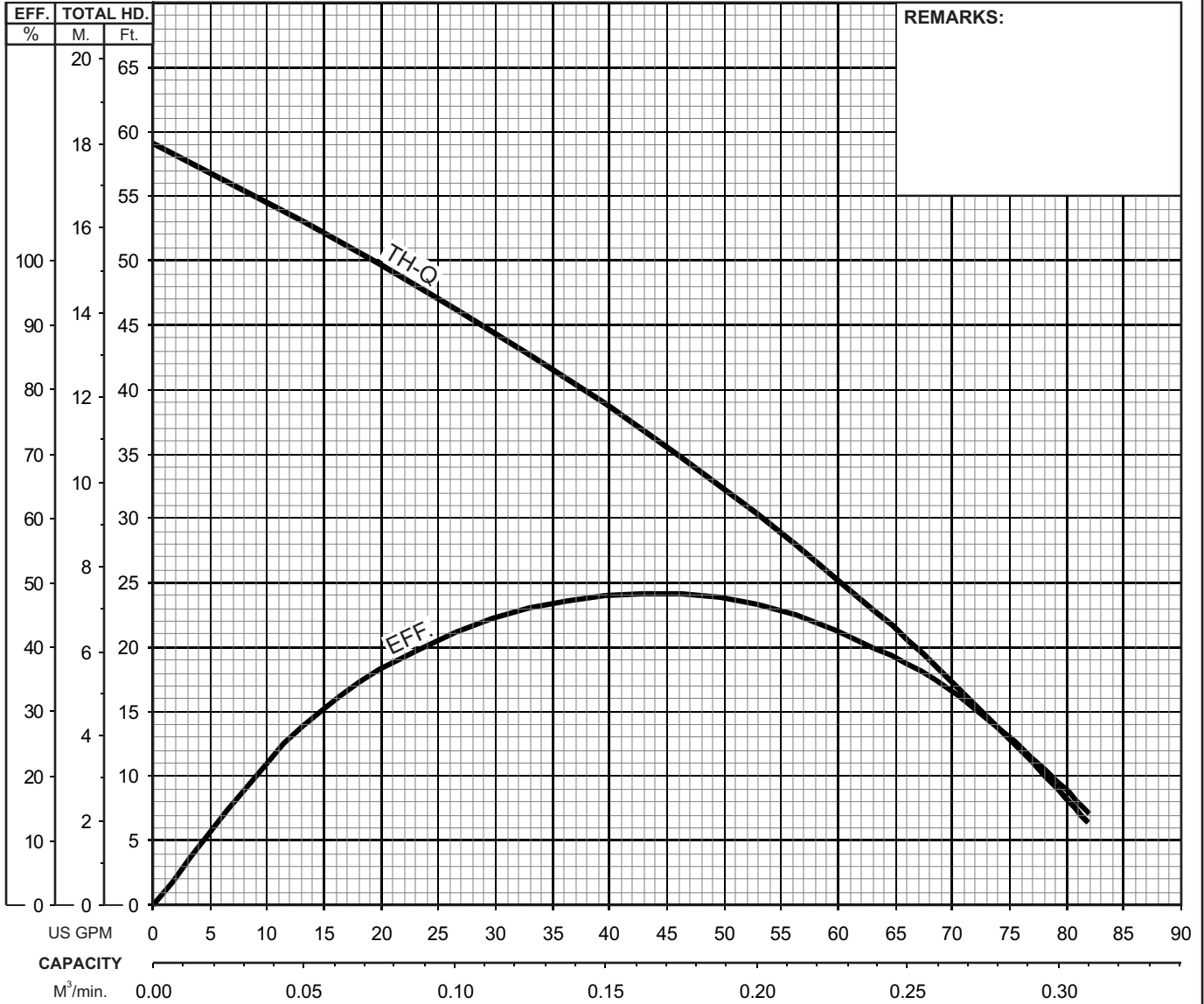




## LB - SERIES SEMI-VORTEX - DEWATERING PUMP

## PERFORMANCE CURVE

MODEL	BORE	HP	KW	RPM	SOLIDS DIA	LIQUID	SG.	VISCOSITY	TEMP.
LB(Z)-800(A)-62	2"/50mm	1	0.75	3316	0.236"/6mm	Water	1.0	1.123 cSt.	60°F
PUMP TYPE	PHASE	VOLTAGE	AMPERAGE	HZ	STARTING METHOD	INS. CLASS			
Semi-Vortex - Dewatering Pump	Single	110/115, 220/230	10.8 / 10.5 , 5.4 / 5.2	60	Capacitor Start	E			
CURVE No.	DATE	PHASE	VOLTAGE	AMPERAGE	HZ	STARTING METHOD	INS. CLASS		
-	-	-	-	-	-	-	-		

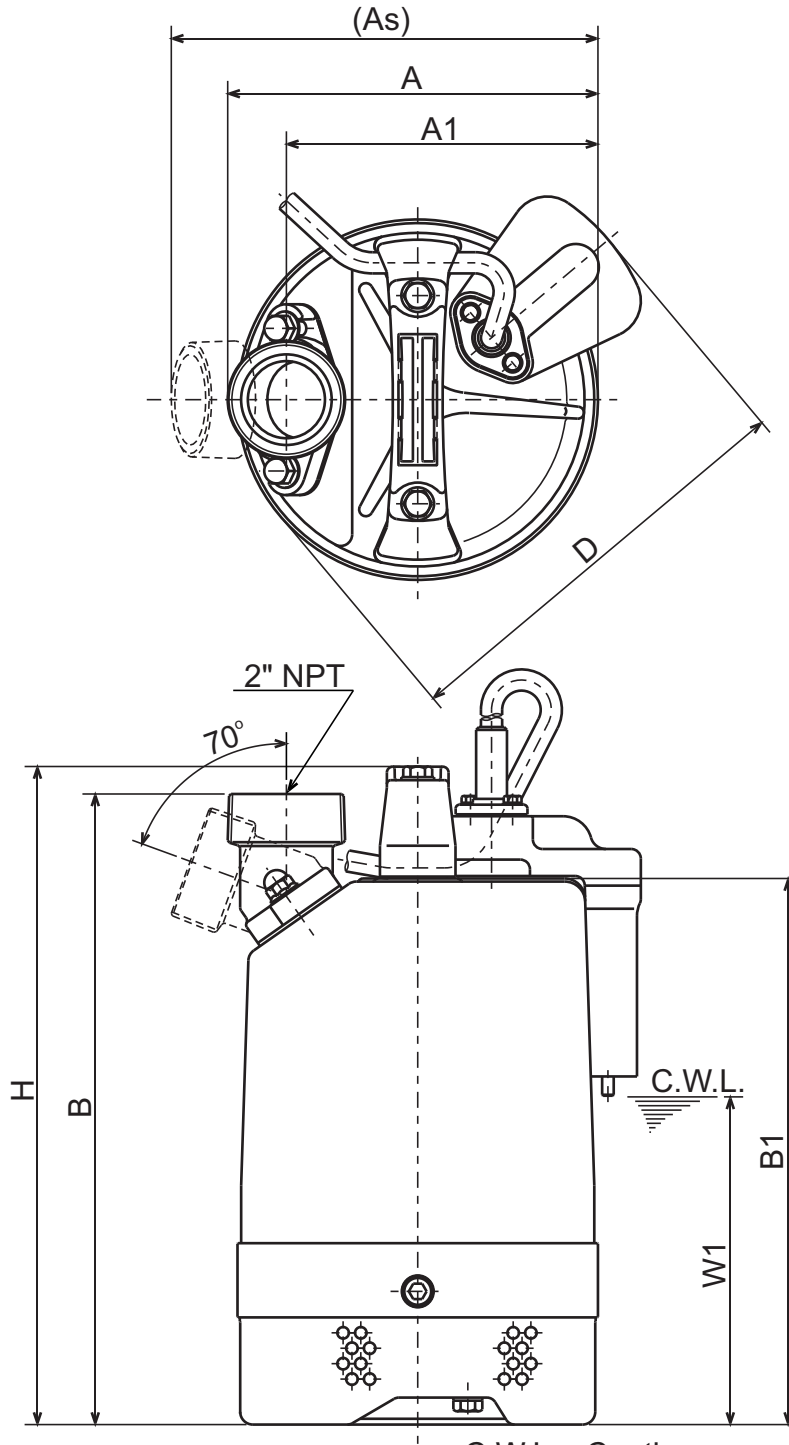




**LB - SERIES**  
SEMI-VORTEX - DEWATERING PUMP (AUTO-TYPE)

**DIMENSIONS**

LB-800A-62



C.W.L. : Continuous running Water Level

**DIMENSIONS:USCS (Inch)**

Model	HP	NOM. SIZE	Pump & Motor								C.W.L. W1	Wt. (lbs.)
			A	As	A1	B	B1	D	H			
LB-800A-62	1	2"	7 9/16	8 11/16	6 3/8	12 7/8	11 1/8	8 3/4	13 7/16	6 3/4	30	

**DIMENSIONS:METRIC (mm)**

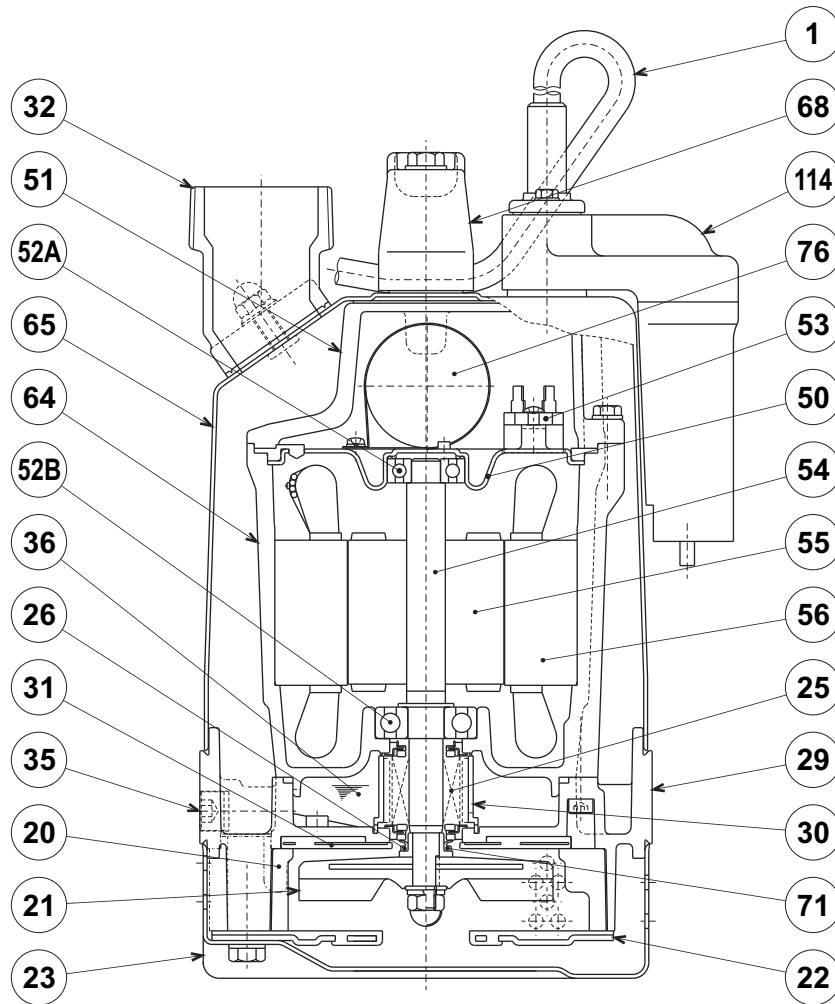
Model	kW	NOM. SIZE	Pump & Motor								C.W.L. W1	Wt. (kg)
			A	As	A1	B	B1	D	H			
LB-800A-62	0.75	50	192	221	162	327	283	223	341	170	13.7	



**TSURUMI PUMP**

**LB - SERIES**  
**SEMI-VORTEX - DEWATERING PUMP (AUTO-TYPE)**

**SECTIONAL VIEW**



**LB-800A-62**

ITEM#	DESCRIPTION	MAIN MATERIAL / NOTE	RELATED ASTM, AISI CODE	RELATED EN CODE	Q'TY
1	Power Cable	PVC Sheath AWG14/3-50ft			1
20	Pump Casing	Butadiene Rubber + Natural Rubber			1
21	Impeller	Urethane Rubber			1
22	Suction Cover	Urethane Rubber + Steel (Cold Rolled)	(A109/A1008)	(EN 10130)	1
23	Suction Strainer	Steel (Cold Rolled)	A109/A1008	EN 10130	1
25	Mechanical Seal	Silicon Carbide / W-14VL			1
26	V-Ring	Nitrile Butadiene Rubber			1
29	Oil Casing	Aluminum Alloy Die Casting	B85 383.0	EN 1706 AC-46100	1
30	Oil Lifter	PBT Resin			1
31	Wearing Plate	Urethane Rubber			1
32	Discharge Connection	Aluminum Alloy Die Casting / NPT 2"	B85 383.0	EN 1706 AC-46100	1
35	Oil Plug	Stainless Steel	S 30400	1.4301	1
36	Lubricant	Turbine Oil ISO VG32 or SAE10W-20			
50	Motor Bracket	Steel (Electro-Galvanized)	A591	EN 10152	1
51	Motor Head Cover	Aluminum Alloy Die Casting	B85 383.0	EN 1706 AC-46100	1
52A	Upper Bearing	#6201ZZC3			1
52B	Lower Bearing	#6302ZZC3			1
53	Motor Protector				1
54	Shaft	Stainless Steel	S 40300	1.4000	1
55	Rotor				1
56	Stator				1
64	Motor Housing	Aluminum Alloy Die Casting	B85 383.0	EN 1706 AC-46100	1
65	Outer Cover	Steel (Cold Rolled)	A109/A1008	EN 10130	1
68	Handle	ABS Resin			1
71	Shaft Sleeve	Stainless Steel	S 30400	1.4301	1
76	Capacitor				1
114	Relay Unit	Styrene Butadien Rubber			1