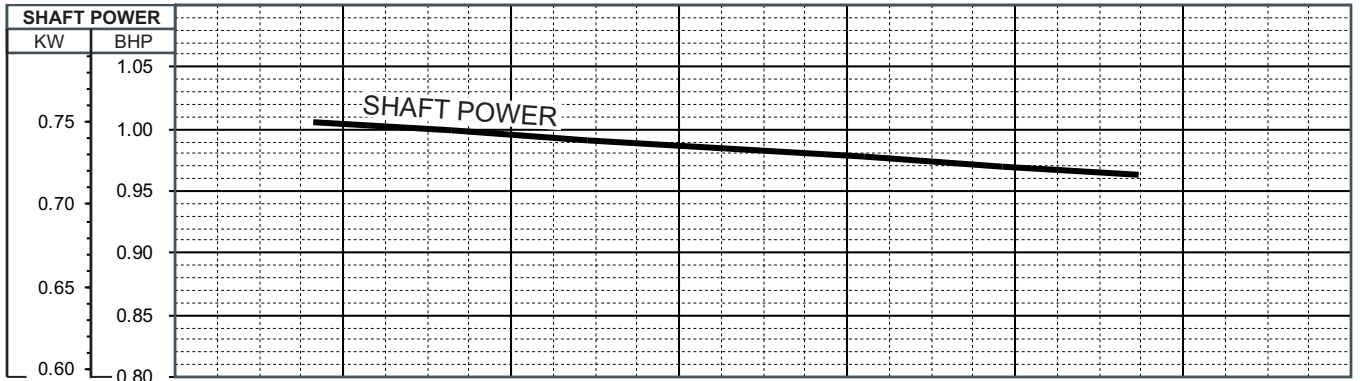
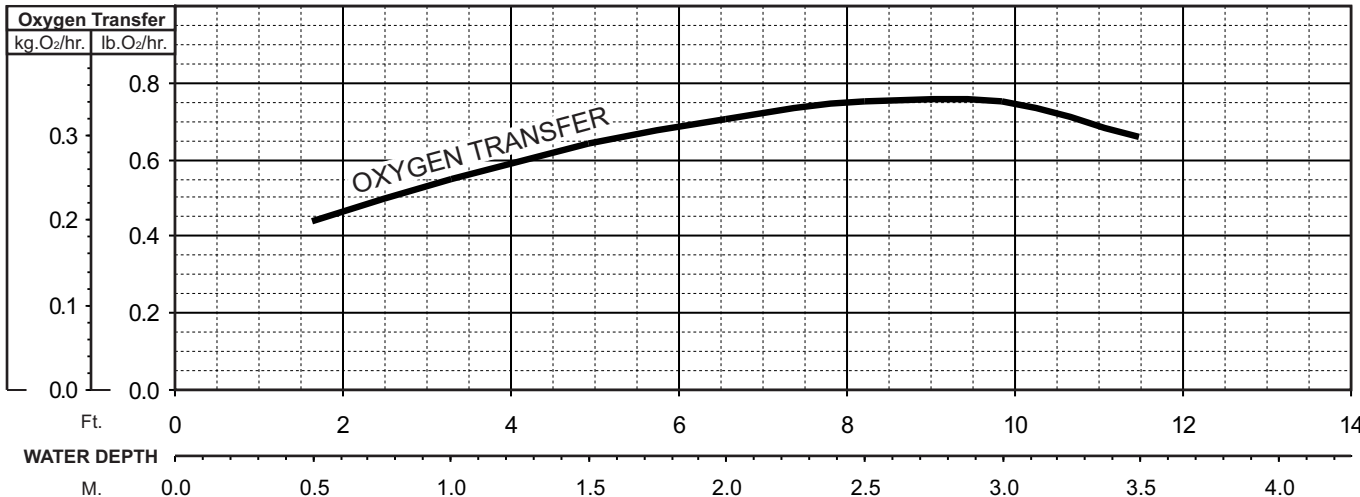
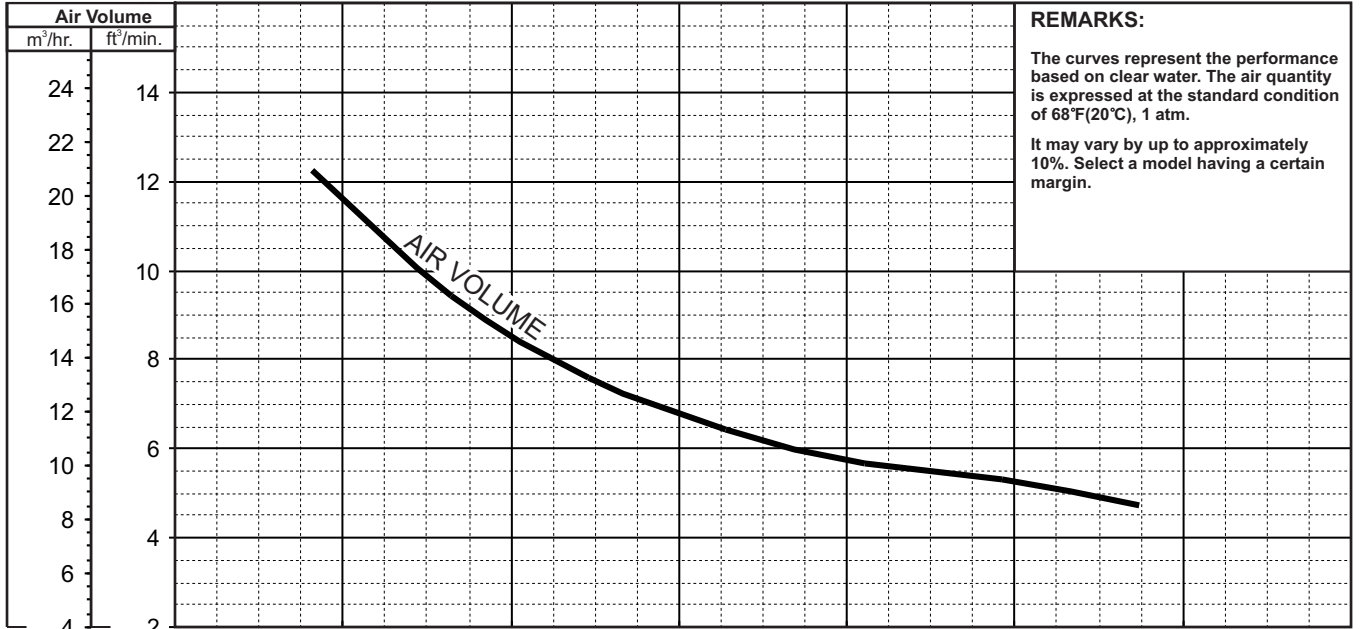




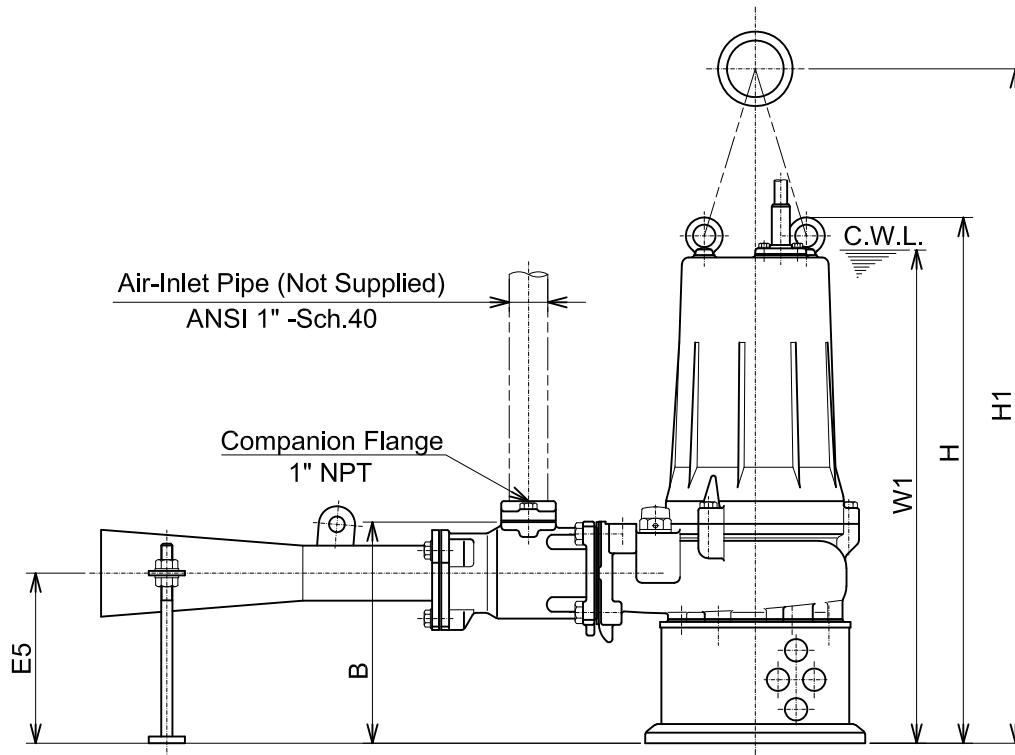
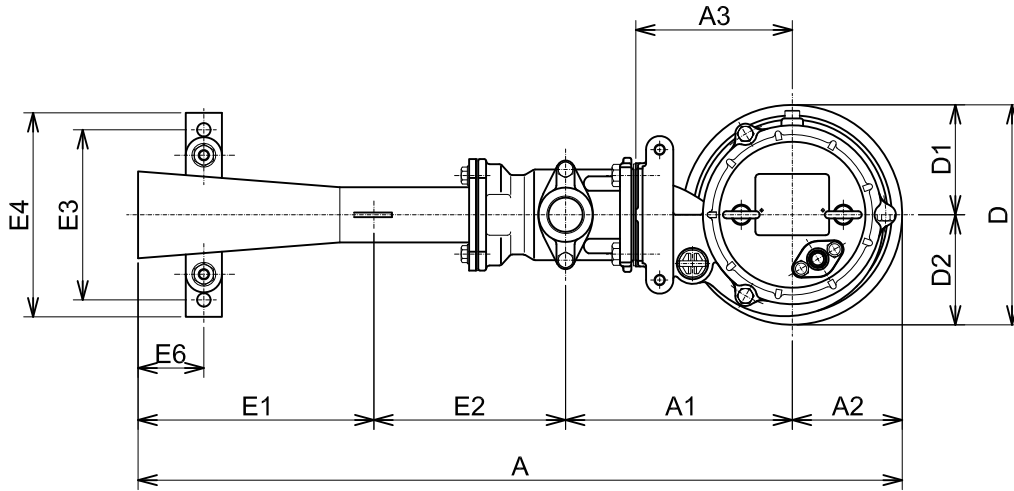
BER - SERIES SUBMERSIBLE - EJECTOR / AERATOR

PERFORMANCE CURVE

MODEL	AIR INLET BORE	HP	KW	RPM	SOLIDS DIA	LIQUID	SG.	VISCOSITY	TEMP.
(TOS-)8-BER4	1" / 25mm	1	0.75	3380	0.787"/20mm	Water	1.0	1.123 cSt.	68°F
MIXING AREA	MAX. DEPTH	PHASE	VOLTAGE	AMPERAGE	HZ	STARTING METHOD	INS. CLASS		
64.6 ft ² / 6.0 m ²	11.5 ft / 3.5 m	Three	208-230 / 460	3.5-3.5 / 1.8	60	Direct On Line	E		
CURVE No.	DATE	PHASE	VOLTAGE	AMPERAGE	HZ	STARTING METHOD	INS. CLASS		
-	-	-	-	-	-	-	-		



8-BER4



C.W.L. : Continuous running Water Level

DIMENSIONS:USCS (Inch)

Model	HP	Air-Inlet Dia.	Ejector Pump & Motor																	C.W.L. W1	*Wt. (lbs.)
			A	A1	A2	A3	B	D	D1	D2	H	H1	E1	E2	E3	E4	E5	E6			
8-BER4	1	1"	26 9/16	7 7/8	3 13/16	5 7/16	7 11/16	7 5/8	3 13/16	3 13/16	18 1/4	23 7/16	8 3/16	6 5/8	5 7/8	7 1/16	5 7/8	2 5/16	17 1/8	62	

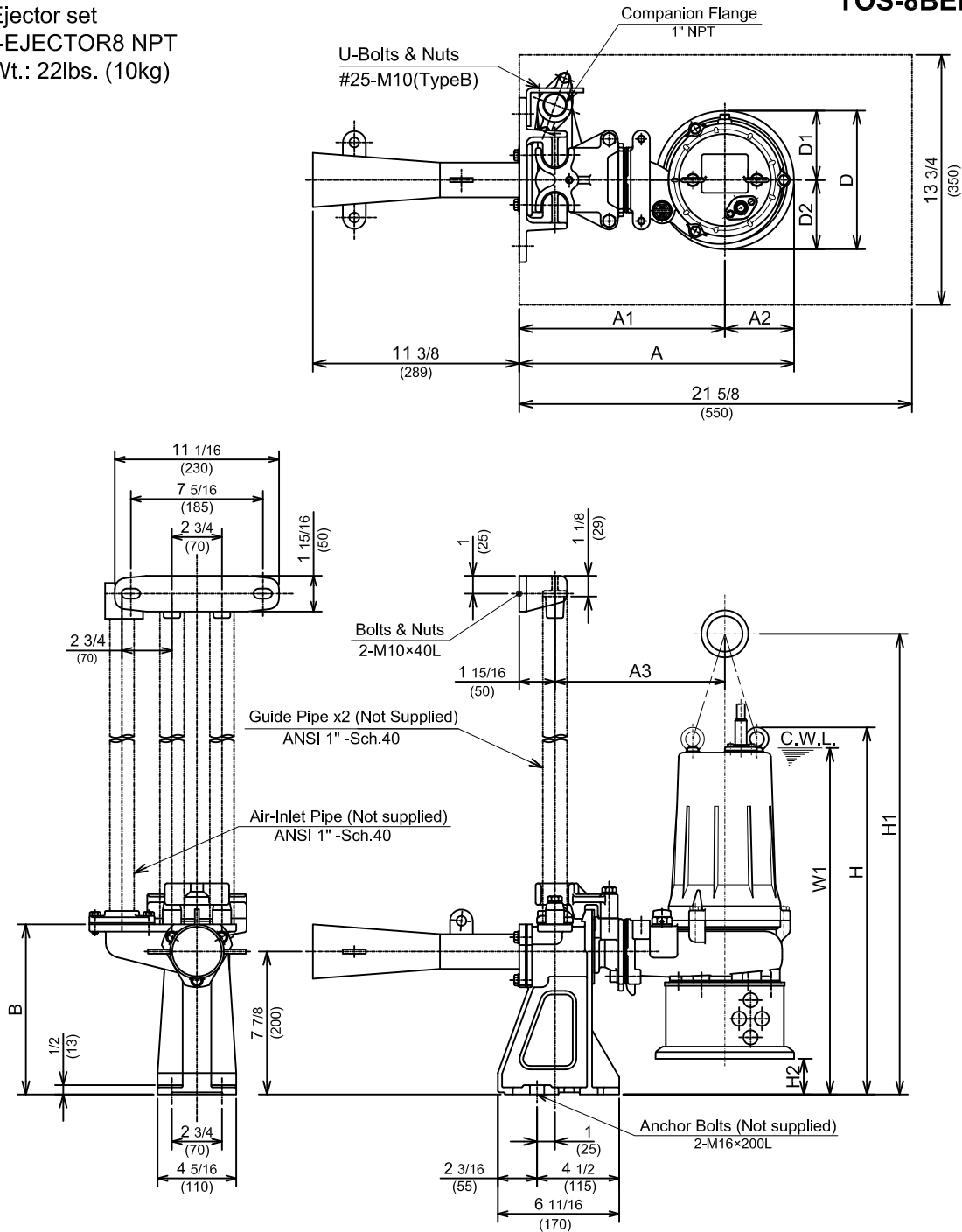
*Excluding Cable

DIMENSIONS:METRIC (mm)

Model	kW	Air-Inlet Dia.	Ejector Pump & Motor																	C.W.L. W1	*Wt. (kg)
			A	A1	A2	A3	B	D	D1	D2	H	H1	E1	E2	E3	E4	E5	E6			
8-BER4	0.75	25	674	200	97	138	195	194	97	97	464	595	208	169	150	180	150	58	435	28	

Guide Rail Ejector set
Model: TOS-EJECTOR8 NPT
Ejector set Wt.: 22lbs. (10kg)

TOS-8BER4



C.W.L. : Continuous running Water Level

DIMENSIONS:USCS (Inch)

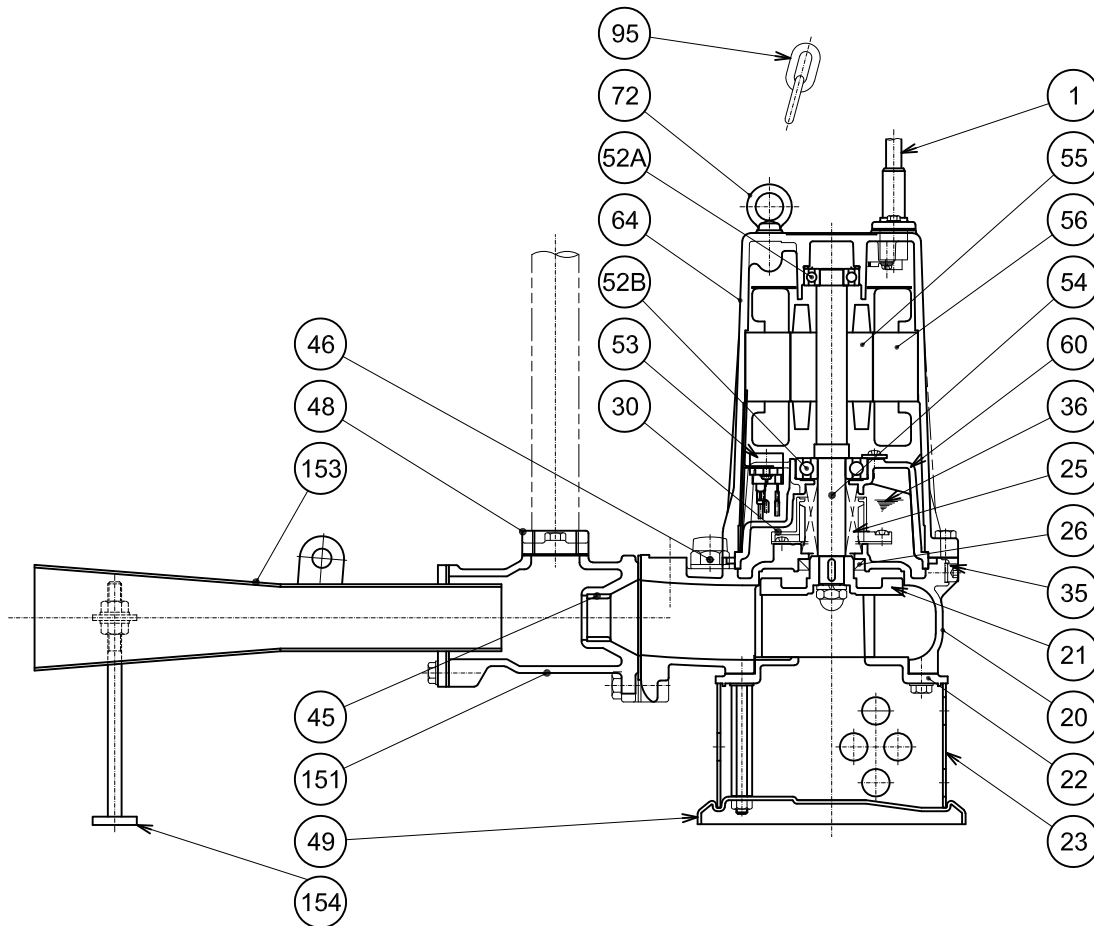
Model	HP	Air-Inlet Dia.	Ejector Pump & Motor											C.W.L. W1	*Wt. (lbs.)
			A	A1	A2	A3	B	D	D1	D2	H	H1	E1		
TOS-8BER4	1	1"	15 3/16	11 5/16	3 13/16	9 3/8	9 3/8	7 5/8	3 13/16	3 13/16	20 1/4	25 3/8	1 15/16	19 1/8	51

DIMENSIONS:METRIC (mm)

*Excluding Cable & Guide Rail System

Model	kW	Air-Inlet Dia.	Ejector Pump & Motor											C.W.L. W1	*Wt. (kg)
			A	A1	A2	A3	B	D	D1	D2	H	H1	H2		
TOS-8BER4	0.75	25	385	288	97	238	238	194	97	97	514	645	50	485	23

8-BER4



PART#	DESCRIPTION	MAIN MATERIAL / NOTE	RELATED ASTM, AISI CODE	RELATED EN CODE	QTY
1	Power Cable	PVC Sheath AWG16/4- 32ft			1
20	Pump Casing	Cast Iron	A48M Class30B	EN 1561 GJL-200	1
21	Impeller	Cast Iron	A48M Class30B	EN 1561 GJL-200	1
22	Suction Cover	Cast Iron	A48M Class30B	EN 1561 GJL-200	1
23	Suction Strainer	Steel (Hot Rolled)	A1011	EN 10111	1
25	Mechanical Seal	Silicon Carbide / H-20A			1
26	Oil Seal	NBR / TC-32488			1
30	Oil Lifter	PBT Plastic w/(GF+MD)40			1
35	Oil Plug	Stainless Steel	S 30400	1.4301	1
36	Lubricant	Turbine Oil ISO VG32 or SAE 10W-20			
45	Nozzle Ring	Stainless Steel Casting	A743 CF-8	GX5CrNi19-10	1
46	Air Valve	Nylon			1
48	Companion Flange	Cast Iron / NPT 1"	A48M Class30B	EN 1561 GJL-200	1
49	Bottom Plate	Steel (Cold Rolled)	A109/A1008	EN 10130	1
52A	Upper Bearing	6203ZC3			1
52B	Lower Bearing	6304ZC3			1
53	Motor Protector				1
54	Shaft	Stainless Steel	S 42000	1.4028	1
55	Rotor				1
56	Stator				1
60	Bearing Housing	Cast Iron	A48M Class25B	EN 1561 GJL-150	1
64	Motor Housing	Cast Iron	A48M Class25B	EN 1561 GJL-150	1
72	Lifting Lug Bolt	Stainless Steel	S 30400	1.4301	2
95	Chain	Steel - 16ft	A283 Grade D	EN 10025 S275	1
151	Suction Casing	Cast Iron	A48M Class30B	EN 1561 GJL-200	1
153	Diffuser	Stainless Steel	S 30400	1.4301	1
154	Diffuser Base	Stainless Steel	S 30400	1.4301	1